



**ThreeY** • SaY

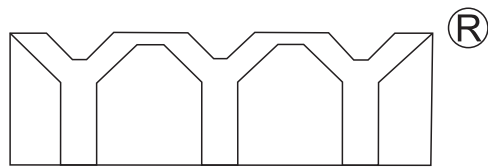
**精密齒條&精密齒輪**

Precision gear & clearance rack

**全 球 專 業 齒 條 制 造 商**

Global Professional Rack Manufacturer





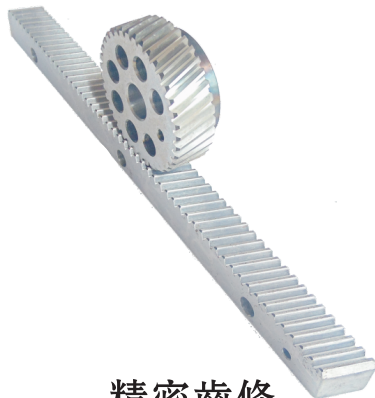
**ThreeY**•SaY

**臺灣齒條 齒輪**

臺灣ThreeY.SaY精密齒條齒輪在臺灣有三十多年的历史，產品銷往世界各地，齒條齒輪分直齒和斜齒，最高精度達到歐標六級精度，最大模數可以做到模數十二，廣泛應用於機器人，機械手，木工機械，激光切割機，玻璃機械，加工中心機，數控機床等行業，得到新老客戶的高度認可和一致好評。因大陸市場需要，成立大陸公司提供更好的服務，用齒條，首選臺灣ThreeY.SaY品牌。

## 品質 服務 品牌

——精密傳動行業領導品牌



精密齒條



精密齒輪



激光切割機專用齒輪



名 稱	頁 碼
齒條齒輪型號說明.....	1
齒條裝配說明.....	2
直齒條 (S45C) DIN 6h25.....	3
直齒條 (S45C) DIN 7e25.....	4
直齒條 (S45C) DIN 8e27.....	5
直齒條 (S45C) DIN 9e27.....	6
直齒條 (S45C) DIN 10e27.....	7
斜齒條 (S45C) DIN 6h25.....	8
斜齒條 (S45C) DIN 7e25.....	9
斜齒條 (S45C) DIN 8e25.....	10
斜齒條 (S45C) DIN 9e27.....	11
斜齒條 (S45C) DIN 10e27.....	12
直齒條 (SCM440) DIN 6h25.....	13
直齒條 (SCM440) DIN 7h25.....	14
直齒條 (SCM440) DIN 8e27.....	15
直齒條 (SCM440) DIN 9e27.....	16
斜齒條 (SCM440) DIN 6h25.....	17
斜齒條 (SCM440) DIN 7e25.....	18
斜齒條 (SCM440) DIN 8e27.....	19
斜齒條 (SCM440) DIN 9e27.....	20
直齒輪 (45C) DIN6h25.....	21
斜齒輪 (45C) DIN6h25.....	22-23
直齒輪 (45C) DIN9e27.....	24
斜齒輪 (45C) DIN9e27.....	25-26
齒條齒輪傳動方式.....	27
零背隙齒條齒輪.....	28



齒條型號說明 Rack Code Instruction

材料	精度	模數	齒形	硬度處理	長度	鑽孔
2	6	020	1	1	05	N
↓	↓	↓	↓	↓	↓	↓
2=S45C	6=磨削	M=1.5	1=直齒	0=調度	05=500mm	N=無鑽孔
3=CM440	7=四面研磨	M=2	2=斜齒	1=硬化處理	10=1000mm	T=特殊尺寸
	8=精銑	M=3				
	9=熱處理 <small>(四面研磨)</small>	M=4				
	10=熱處理	M=5				
		M=6				
		M=8				
		M=10				

齒輪型號說明 Rack Code Instruction

材料	精度	模數	齒形	硬度處理	齒數	T
2	6	020	1	1	20	T
↓	↓	↓	↓	↓	↓	↓
2=S45C	6=磨削	M=1.5	1=直齒	0=調度	15	T=特殊尺寸
3=CM440	9=熱處理	M=2	2=斜齒	1=硬化處理	20	
		M=3			25	
		M=4			30	
		M=5			35	
		M=6			40	
		M=8			45	
		M=10				

可定制CP3、CP5、CP8、CP10、CP12、CP16、DP4、DP5、DP8、DP10、DP12、DP16、DP20





為了可以更順利的安裝連接齒條，標準齒條的兩端端面將會加工為半齒齒底；以方便跟下一支齒條的端面半齒齒底連接成一個全齒。下圖表示為兩支齒條如何連接,并由齒規可以擁有準確的齒距位置。關於斜齒齒條相接可以籍由反向齒規調整精度的配合，以便可以精準的連接齒條。

1.而在齒條安裝相接時，我們建議先鎖上齒條側面的安裝孔，并依照基座上相對應的孔位依序鎖上；并籍由安裝齒規可以很準確的將齒條的齒距位置安裝完成。

2.最后再齒條上的兩端側面的固定銷孔給固定上即完成安裝。

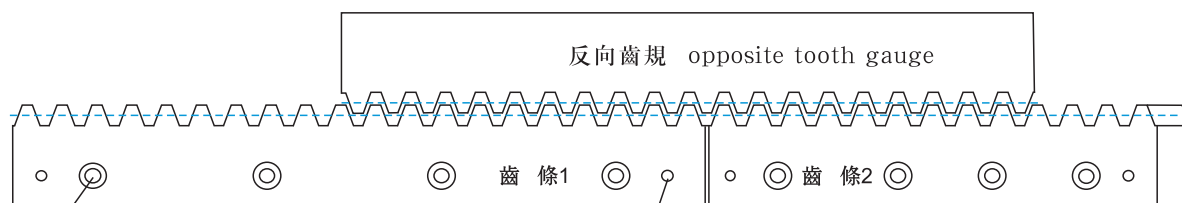
## Instruction of Rack Assembly

To assemble connected racks more smoothly, 2 ends of a standard rack would add half tooth which is convenient for next half tooth of next rack to be connected to a complete tooth. The following drawing shows how 2 racks connect and tooth gauge can control pitch position accurately.

With regards to connection of helical racks it can be connected accurately by opposite tooth gauge.

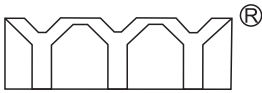
1. When connecting racks, we recommend lock bores on the sides of rack first, and lock bores by the sequence of the foundation. With assembling the tooth gauge, pitch position of racks can be assembled accurately and completely.

2. Last, lock the position pin on 2 sides of rack; the assembly is completed.



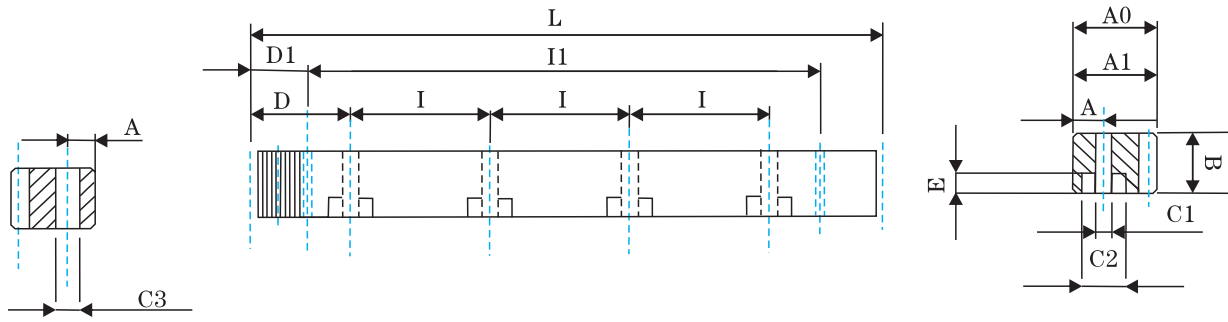
安裝順序1: 安裝孔  
assembly sequence1: assembly bore

安裝順序2: 固定銷孔  
assembly sequence2: position pin



**Three Y** · saV

可任意连续拼接，模数为1.5-12齿条



單位/Dimension:mm

訂貨號 Order	模數 Module	L	齒數 Tooth No	B	A0	A1	D	I	孔數 Hole No.	A	C1	C2	E	D1	I1	C3	總齒距誤差 Pitch Error /300mm
260151105	1.5	499.51	106	17	17	15.5	62.44	124.88	4	7	7	11	7	29	441.5	5.7	0.021
260151110	1.5	999.03	212	17	17	15.5	62.44	124.88	8	7	7	11	7	29	941	5.7	0.021
260151105	1.5	499.51	106	19	19	15.5	62.44	124.88	4	7	7	11	7	29	441.5	5.7	0.021
260151110	1.5	999.03	212	19	19	15.5	62.44	124.88	8	7	7	11	7	29	941	5.7	0.021
260201105	2	502.65	80	24	24	22	62.83	125.66	4	8	7	11	7	31.3	440.1	5.7	0.022
260201110	2	1005.31	160	24	24	22	62.83	125.66	8	8	7	11	7	31.3	942.7	5.7	0.022
260301105	3	508.94	54	29	29	26	63.62	127.23	4	9	10	15	9	34.4	440.1	7.7	0.024
260301110	3	1017.88	108	29	29	26	63.62	127.23	8	9	10	15	9	34.4	949.1	7.7	0.024
260401105	4	502.65	40	39	39	35	62.83	125.66	4	12	10	15	9	37.5	427.7	7.7	0.025
260401110	4	1005.31	80	39	39	35	62.83	125.66	8	12	10	15	9	37.5	930.3	7.7	0.025
260501105	5	502.65	32	49	39	34	62.83	125.66	4	12	14	20	13	30.1	442.4	11.7	0.025
260501110	5	1005.31	64	49	39	34	62.83	125.66	8	12	14	20	13	30.1	945	11.7	0.025
260601105	6	508.94	27	59	49	43	63.62	127.23	4	16	18	26	17	31.4	446.1	15.7	0.026
260601110	6	1017.88	54	59	49	43	63.62	127.23	8	16	18	26	17	31.4	955.0	15.7	0.026
260801105	8	502.65	20	79	79	71	62.83	125.66	4	25	22	33	21	26.6	449.5	19.7	0.027
260801110	8	1005.31	40	79	79	71	62.83	125.66	8	25	22	33	21	26.6	952	19.7	0.027
261001110	10	1005.31	32	99	99	89	62.83	125.66	8	32	33	48	32	125.67	753.96	19.7	0.028
261201110	12	1017.90	27	120	120	108	63.6	127.23	8	40	39.0	58	38	127.67	763.4	19.7	0.029

制程說明:

精度等級: (JIS2級) DIN6h25

材料: (S45C中碳鋼) C45

齒型: 直齒

齒面處理: 磨削

硬度處理: 高周波, 硬度為HRC43~45度

四面磨削: 有

壓力角: 20度

\*亦供應無鑽孔的齒條,請于型號後加注“N”的如260201110N.

\*不同尺寸與材質可以依照圖面客制化。

\*總齒距誤差: 每300毫米齒距累積量誤差的最大值。

Manufacturing Description:

Precision Grade:(JIS Grade 2)DIN 6h25

Material:(S45C Medium Carbon Steel)C45

Type:Straight Rack

Treatment of Teeth:Ground

Hardness:High Frequency.HRC43~45degree

Sides Ground: included.

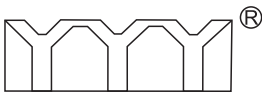
Pressure Angle:20degree

\*Racks without holes are also available.Note “N” in the end of code number .i.e260201110N.

\*Other Dimensions/Materials could be customized by drawings.

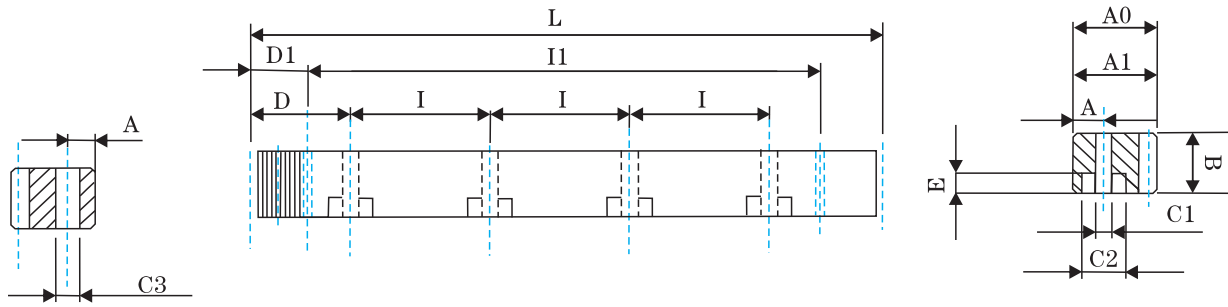
\*Pitch Error:total pitch error per 300mm.

此樣本中的所有產品型號及參數如有變更恕不另行通告, 訂貨前請與本公司聯絡確認, 可按要求訂制



**Three Y** · saV

可任意连续拼接，模数为1.5-12齿条



單位/Dimension:mm

訂貨號 Order	模數 Module	L	齒數 Tooth No	B	A0	A1	D	I	孔數 Hole No.	A	C1	C2	E	D1	I1	C3	總齒距誤差 Pitch Error /300mm
270151005	1.5	499.51	106	17	17	15.5	62.44	124.88	4	7	7	11	7	29	441.5	5.7	
270151010	1.5	999.03	212	17	17	15.5	62.44	124.88	8	7	7	11	7	29	941	5.7	
270151005	1.5	499.51	106	19	19	15.5	62.44	124.88	4	7	7	11	7	29	441.5	5.7	
270151010	1.5	999.03	212	19	19	15.5	62.44	124.88	8	7	7	11	7	29	941	5.7	
270201005	2	502.65	80	25	24	22	62.83	125.66	4	8	7	11	7	31.3	440.1	5.7	
270201010	2	1005.31	160	25	24	22	62.83	125.66	8	8	7	11	7	31.3	942.7	5.7	
270301005	3	508.94	54	30	29	26	63.62	127.23	4	9	10	15	9	34.4	440.1	7.7	
270301010	3	1017.88	108	30	29	26	63.62	127.23	8	9	10	15	9	34.4	949.1	7.7	
270401005	4	502.65	40	40	39	35	62.83	125.66	4	12	10	15	9	37.5	427.7	7.7	
270401010	4	1005.31	80	40	39	35	62.83	125.66	8	12	10	15	9	37.5	930.3	7.7	
270501005	5	502.65	32	49	39	34	62.83	125.66	4	12	14	20	13	30.1	442.4	11.7	
270501010	5	1005.31	64	49	39	34	62.83	125.66	8	12	14	20	13	30.1	945.0	11.7	
270601005	6	508.94	27	59	49	43	63.62	127.23	4	16	18	26	17	31.4	446.1	15.7	
270601010	6	1017.88	54	59	49	43	63.62	127.23	8	16	18	26	17	31.4	955.0	15.7	
270801005	8	502.65	20	79	79	71	62.83	125.66	4	25	22	33	21	26.6	449.5	19.7	
270801010	8	1005.31	40	79	79	71	62.83	125.66	8	25	22	33	21	26.6	952	19.7	
271001010	10	1005.31	32	99	99	89	62.83	125.66	8	32	33	48	32	125.7	753.96	19.7	

**制程說明:**

精度等級: (JIS3級) DIN7e25

材料: (S45C中碳鋼) C45

齒型: 直齒

齒面處理: 精銑

硬度處理: 調質處理硬度HRC18~22度

四面磨削: 有

壓力角: 20度

**Manufacturing Description:**

Precision Grade:(JIS Grade 3)DIN 7e25

Material:(S45C Medium Carbon Steel)C45

Type: Straight Rack

Treatment of Teeth:Milled

Hardness:quenched;18~22degree

Sides Ground:included.

Pressure Angle:20degree

\*亦供應無鑽孔的齒條,請于型號後加注 "N" 的如270201010N.

\*不同尺寸與材質以可依照圖面客制化。

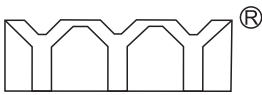
\*總齒距誤差: 每300毫米齒距累積量誤差的最大值。

\*Racks without holes are also available.Note "N" in the end of code number .i.e.270201010N.

\*Other Dimensions/Materials could be customized by drawings.

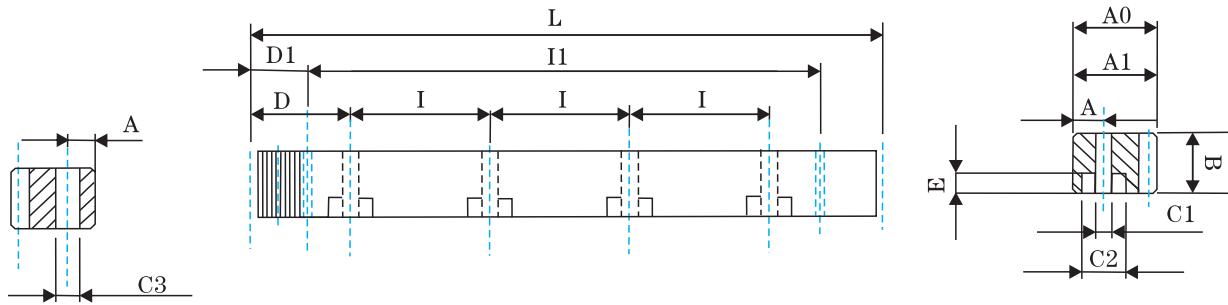
\*Pitch Error:total pitch error per 300mm.

此樣本中的所有產品型號及參數如有變更恕不另行通告, 訂貨前請與本公司聯絡確認, 可按要求訂制



Three Y<sup>®</sup> SaV

可任意连续拼接，模数为1.5-12齿条



單位/Dimension:mm

訂貨號 Order	模數 Module	L	齒數 Tooth No	B	A0	A1	D	I	孔數 Hole No.	A	C1	C2	E	D1	I1	C3	總齒距誤差 Pitch Error /300mm
280151005	1.5	499.51	106	17	17	15.5	62.44	124.88	4	7	7	11	7	29	441.5	5.7	0.042
280151010	1.5	999.03	212	17	17	15.5	62.44	124.88	8	7	7	11	7	29	941	5.7	0.042
280151005	1.5	499.51	106	19	19	15.5	62.44	124.88	4	7	7	11	7	29	441.5	5.7	0.042
280151010	1.5	999.03	212	19	19	15.5	62.44	124.88	8	7	7	11	7	29	941	5.7	0.042
280201005	2	502.65	80	25	24	22	62.83	125.66	4	8	7	11	7	31.3	440.1	5.7	0.044
280201010	2	1005.31	160	25	24	22	62.83	125.66	8	8	7	11	7	31.3	942.7	5.7	0.044
280301005	3	508.94	54	30	29	26	63.62	127.23	4	9	10	15	9	34.4	440.1	7.7	0.046
280301010	3	1017.88	108	30	29	26	63.62	127.23	8	9	10	15	9	34.4	949.1	7.7	0.046
280401005	4	502.65	40	40	39	35	62.83	125.66	4	12	10	15	9	37.5	427.7	7.7	0.048
280401010	4	1005.31	80	40	39	35	62.83	125.66	8	12	10	15	9	37.5	930.3	7.7	0.048
280501005	5	502.65	32	49	39	34	62.83	125.66	4	12	14	20	13	30.1	442.4	11.7	0.05
280501010	5	1005.31	64	49	39	34	62.83	125.66	8	12	14	20	13	30.1	945.0	11.7	0.05
280601005	6	508.94	27	59	49	43	63.62	127.23	4	16	18	26	17	31.4	446.1	15.7	0.055
280601010	6	1017.88	54	59	49	43	63.62	127.23	8	16	18	26	17	31.4	955.0	15.7	0.055
280801005	8	502.65	20	79	79	71	62.83	125.66	4	25	22	33	21	26.6	449.5	19.7	0.06
280801010	8	1005.31	40	79	79	71	62.83	125.66	8	25	22	33	21	26.6	952	19.7	0.06
281001010	10	1005.31	32	99	99	89	62.83	125.66	8	32	33	48	32	125.7	753.96	19.7	0.065

制程說明:

精度等級: (JIS4級) DIN8e27

材料: (S45C中碳鋼) C45

齒型: 直齒

齒面處理: 精銑

硬度處理: 硬度HRC18~22度

四面磨削: 無

壓力角: 20度

Manufacturing Description:

Precision Grade:(JIS Grade 4)DIN 8e27

Material:(S45C Medium Carbon Steel)C45

Type: Straight Rack

Treatment of Teeth:Milled

Hardness:HRC18~22degrees

Sides Ground:not included.

Pressure Angle:20degree

\*亦供應無鑽孔的齒條,請于型號後加註“N”的如280201010N.

\*不同尺寸與材質可以依照圖面客制化。

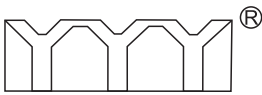
\*總齒距誤差:每300毫米齒距累積量誤差的最大值。

\*Racks without holes are also available.Note “N” in the end of code number .i.e.280201010N.

\*Other Dimensions/Materials could be customized by drawings.

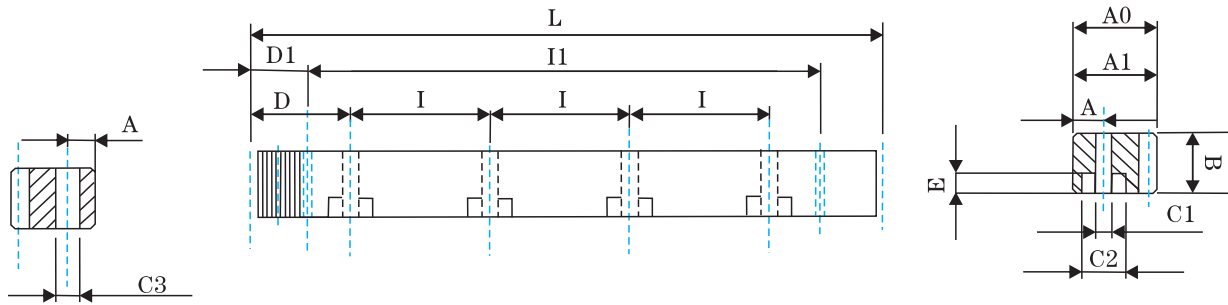
\*Pitch Error:total pitch error per 300mm.

此樣本中的所有產品型號及參數如有變更恕不另行通告, 訂貨前請與本公司聯絡確認, 可按要求訂制



**Three Y** · SaV

可任意连续拼接，模数为1.5-12齿条



單位/Dimension:mm

訂貨號 Order	模數 Module	L	齒數 Tooth No	B	A0	A1	D	I	孔數 Hole No.	A	C1	C2	E	D1	I1	C3	總齒距誤差 Pitch Error /300mm
290151105	1.5	499.51	106	17	17	15.5	62.44	124.88	4	7	7	11	7	29	441.5	5.7	0.058
290151110	1.5	999.03	212	17	17	15.5	62.44	124.88	8	7	7	11	7	29	941	5.7	0.058
290151105	1.5	499.51	106	19	19	15.5	62.44	124.88	4	7	7	11	7	29	441.5	5.7	0.058
290151110	1.5	999.03	212	19	19	15.5	62.44	124.88	8	7	7	11	7	29	941	5.7	0.058
290201105	2	502.65	80	24	24	22	62.83	125.66	4	8	7	11	7	31.3	440.1	5.7	0.059
290201110	2	999.03	159	24	24	22	62.83	125.66	8	8	7	11	7	31.3	942.7	5.7	0.061
290301105	3	508.94	54	29	29	26	63.62	127.23	4	9	10	15	9	34.4	440.1	7.7	0.065
290301110	3	1017.88	108	29	29	26	63.62	127.23	8	9	10	15	9	34.4	949.1	7.7	0.065
290401105	4	502.65	40	39	39	35	62.83	125.66	4	12	10	15	9	37.5	427.7	7.7	0.068
290401110	4	1005.31	80	39	39	35	62.83	125.66	8	12	10	15	9	37.5	930.3	7.7	0.068
290501105	5	502.65	32	49	39	34	62.83	125.66	4	12	14	20	13	30.1	442.4	11.7	0.07
290501110	5	1005.31	64	49	39	34	62.83	125.66	8	12	14	20	13	30.1	945	11.7	0.07
290601105	6	508.94	27	59	49	43	63.62	127.23	4	16	18	26	17	31.4	446.1	15.7	0.072
290601110	6	1017.88	54	59	49	43	63.62	127.23	8	16	18	26	17	31.4	955.0	15.7	0.072
290801105	8	502.65	20	79	79	71	62.83	125.66	4	25	22	33	21	26.6	449.5	19.7	0.075
290801110	8	1005.31	40	79	79	71	62.83	125.66	8	25	22	33	21	26.6	952	19.7	0.075
291001110	10	1005.31	32	99	99	89	62.83	125.66	8	32	33	48	32	125.7	753.96	19.7	0.08

**制程說明:**

精度等級: (JIS5級) 符合DIN9e27

材料: (S45C中碳鋼) C45

齒型: 直齒

齒面處理: 精銑

硬度處理: 硬度HRC43~45度

四面磨削: 有

壓力角: 20度……

\*亦供應無鑽孔的齒條,請于型號後加註“N”的如290201110N.

\*不同尺寸與材質以可依照圖面客制化。

\*總齒距誤差: 每300毫米齒距累積量誤差的最大值。

**Manufacturing Description:**

Precision Grade:(JIS Grade 5)DIN 9e27

Material:(S45C Medium Carbon Steel)C45

Type: Straight Rack

Treatment of Teeth: Milled

Hardness: High Frequency; HRC43~45 degree

Sides Ground: included.

Pressure Angle: 20 degree

\*Racks without holes are also available. Note “N” in the end of code number. i.e. 290201110N.

\*Other Dimensions/Materials could be customized by drawings.

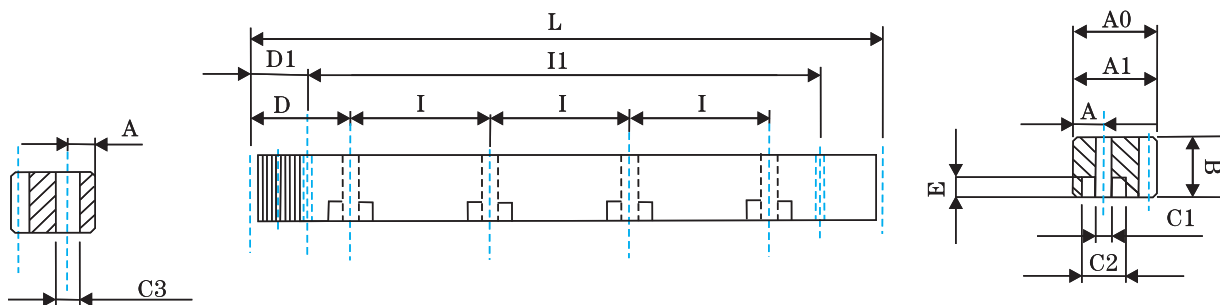
\*Pitch Error: total pitch error per 300mm.

此樣本中的所有產品型號及參數如有變更恕不另行通告, 訂貨前請與本公司聯絡確認, 可按要求訂制



Three Y<sup>®</sup> SaV

可任意连续拼接，模数为1.5-12齿条



單位/Dimension:mm

訂貨號 Order	模數 Module	L	齒數 Tooth No	B	A0	A1	D	I	孔數 Hole No.	A	C1	C2	E	D1	I1	C3	總齒距誤差 Pitch Error /300mm
2100151105	1.5	499.51	106	17	17	15.5	62.44	124.88	4	7	7	11	7	29	441.5	5.7	0.082
2100151110	1.5	999.03	212	17	17	15.5	62.44	124.88	8	7	7	11	7	29	941	5.7	0.082
2100151105	1.5	499.51	106	19	19	15.5	62.44	124.88	4	7	7	11	7	29	441.5	5.7	0.082
2100151110	1.5	999.03	212	19	19	15.5	62.44	124.88	8	7	7	11	7	29	941	5.7	0.082
2100201105	2	502.65	80	24	24	22	62.83	125.66	4	8	7	11	7	31.3	440.1	5.7	0.086
2100201110	2	1005.31	160	24	24	22	62.83	125.66	8	8	7	11	7	31.3	942.7	5.7	0.086
2100301105	3	508.94	54	29	29	26	63.62	127.23	4	9	10	15	9	34.4	440.1	7.7	0.091
2100301110	3	1017.88	108	29	29	26	63.62	127.23	8	9	10	15	9	34.4	949.1	7.7	0.091
2100401105	4	502.65	40	39	39	35	62.83	125.66	4	12	10	15	9	37.5	427.7	7.7	0.095
2100401110	4	1005.31	80	39	39	35	62.83	125.66	8	12	10	15	9	37.5	930.3	7.7	0.095
2100501105	5	502.65	32	49	39	34	62.83	125.66	4	12	14	20	13	30.1	442.4	11.7	0.098
2100501110	5	1005.31	64	49	39	34	62.83	125.66	8	12	14	20	13	30.1	945	11.7	0.098
2100601105	6	508.94	27	59	49	43	63.62	127.23	4	16	18	26	17	31.4	446.1	15.7	0.100
2100601110	6	1017.88	54	59	49	43	63.62	127.23	8	16	18	26	17	31.4	955.0	15.7	0.100
2100801105	8	502.65	20	79	79	71	62.83	125.66	4	25	22	33	21	26.6	449.5	19.7	0.105
2100801110	8	1005.31	40	79	79	71	62.83	125.66	8	25	22	33	21	26.6	952	19.7	0.105
2101001110	10	1005.31	32	99	99	89	62.83	125.66	8	32	33	48	32	125.7	753.96	19.7	0.110

制程說明:

精度等級: (JIS6級) 符合DIN10e27

材料: S45C

齒型: 直齒

齒面處理: 精銑

硬度處理: 高周波, 硬度為HRC43-45度

四面磨削: 無

壓力角: 20度

\*亦供應無鑽孔的齒條, 請于型號後加註“N”的如290201110N.

\*不同尺寸與材質以可依照圖面客制化。

\*總齒距誤差: 每300毫米齒距累積量誤差的最大值。

Manufacturing Description:

Precision Grade:(JIS Grade 6)DIN 10e27

Material:S45C

Type:StraightRack

Treatment of Teeth:Milled

Hardness:High Frequency;HRC43~45 degree

Sides Ground:not included.

Pressure Angle:20degree

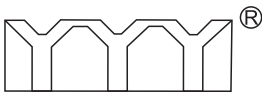
\*Racks without holes are also available.Note “N” in the end of code number .i.e.290201110N.

\*Other Dimensions/Materials could be customized by drawings.

\*Pitch Error:total pitch error per 300mm.

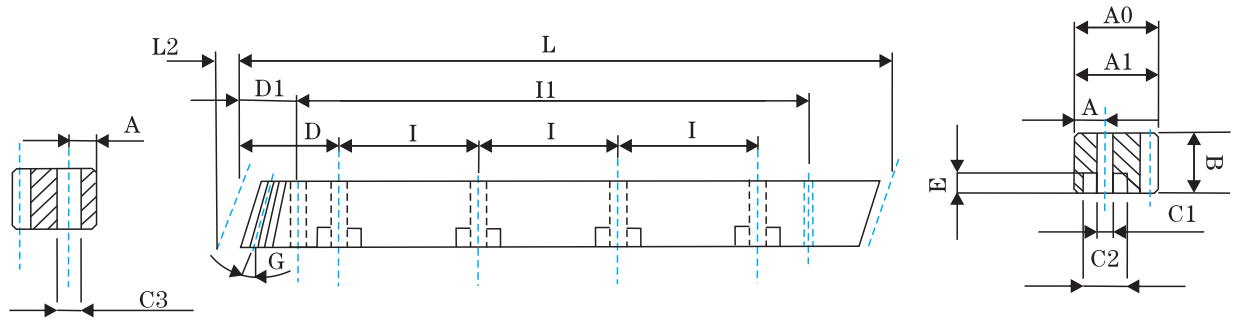
此樣本中的所有產品型號及參數如有變更恕不另行通告, 訂貨前請與本公司聯絡確認, 可按要求訂制





**Three Y** · saV

可任意连续拼接，模数为1.5-12齿条



單位/Dimension:mm

訂貨號 Order	模數 Module	L	L2	齒數 Tooth No	B	A0	A1	D	I	孔數 Hole No.	A	C1	C2	E	D1	I1	C3	總齒距誤差 Pitch Error /300mm
260152105	1.5	500.00	6.7	100	17	17	15.5	62.50	125	4	7	7	11	7	31.7	436.6	5.7	0.021
260152110	1.5	1000.00	6.7	200	17	17	15.5	62.50	125	8	7	7	11	7	31.7	936.6	5.7	0.021
260152105	1.5	500.00	6.7	100	19	19	15.5	62.50	125	4	7	7	11	7	31.7	436.6	5.7	0.021
260152110	1.5	1000.00	6.7	200	19	19	15.5	62.50	125	8	7	7	11	7	31.7	936.6	5.7	0.021
260202105	2	500.00	8.5	75	24	24	22	62.50	125	4	8	7	11	7	31.7	436.6	5.7	0.022
260202110	2	1000.00	8.5	150	24	24	22	62.50	125	8	8	7	11	7	31.7	936.6	5.7	0.022
260302105	3	500.00	10.3	50	29	29	26	62.50	125	4	9	10	15	9	35.0	430.0	7.7	0.024
260302110	3	1000.00	10.3	100	29	29	26	62.50	125	8	9	10	15	9	35.0	930.0	7.7	0.024
260402105	4	506.67	13.8	38	39	39	35	62.50	125	4	12	10	15	9	33.3	433.0	7.7	0.024
260402110	4	1000.00	13.8	75	39	39	35	62.50	125	8	12	10	15	9	33.3	933.4	7.7	0.024
260502105	5	500.00	17.4	30	49	39	34	62.50	125	4	12	14	20	13	37.5	425.0	11.7	0.025
260502110	5	1000.00	17.4	60	49	39	34	62.50	125	8	12	14	20	13	37.5	925.0	11.7	0.025
260602105	6	500.00	20.9	25	59	49	43	62.50	125	4	16	18	26	17	37.5	425.0	15.7	0.026
260602110	6	1000.00	20.9	50	59	49	43	62.50	125	8	16	18	26	17	37.5	925.0	15.7	0.026
260802105	8	480.00	28.0	18	79	79	71	60.00	120	4	25	22	33	21	120.0	240.0	19.7	0.027
260802110	8	960.00	28.0	36	79	79	71	60.00	120	8	25	22	33	21	120.0	720.0	19.7	0.027
261002110	10	1000.00	35.11	30	99	99	89	62.50	125	8	32	33	48	32	125.0	750.0	19.7	0.03
261202110	12	1000.00	42.56	25	120	120	108	40.00	125	8	40	39	58	38	125.0	750.0	19.7	0.029

**制程說明:**

精度等級: (JIS2級) 符合DIN6h25

材料: (S45C中碳鋼) C45

齒型: 斜齒

齒面處理: 磨削

硬度處理: 高周波, 硬度為HRC43~45度

四面磨削: 有

右旋角: 19° 31' 42"

壓力角: 20度

**Manufacturing Description:**

Precision Grade:(JIS Grade 2)DIN 6h25

Material:(S45C Medium Carbon Steel)C45

Type:Helical Rack

Treatment of Teeth:Ground

Hardness:High Frequency;HRC43~45 degree

Sides Ground:not Included.

Right Hand Angle:19° 31' 42"

Pressure Angle:20degree

\*亦供應無鑽孔的齒條,請于型號後加注 "N" 的如260201010N.

\*不同尺寸與材質以可依照圖面客制化。

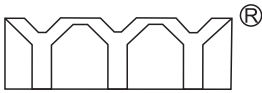
\*總齒距誤差: 每300毫米齒距累積量誤差的最大值。

\*Racks without holes are also available.Note "N" in the end of code number .i.e260201010N.

\*Other Dimensions/Materials could be customized by drawings.

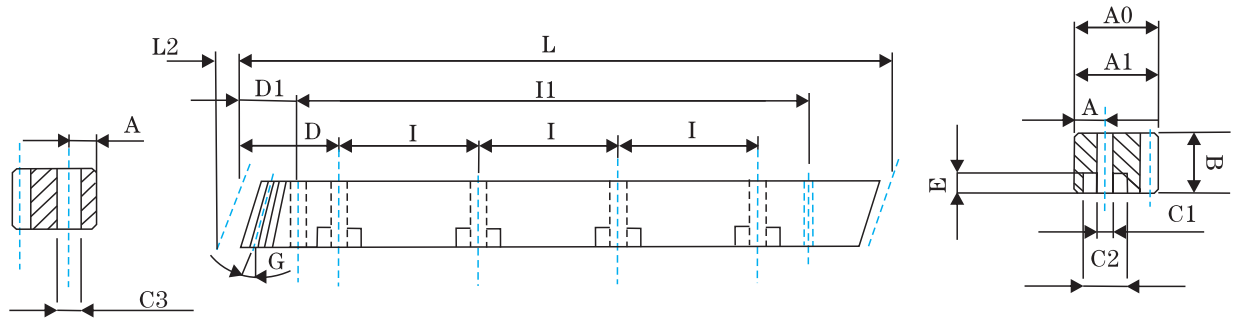
\*Pitch Error:total pitch error per 300mm.

此樣本中的所有產品型號及參數如有變更恕不另行通告, 訂貨前請與本公司聯絡確認, 可按要求訂制



**Three Y** · SaV

可任意连续拼接，模数为1.5-12齿条



單位/Dimension:mm

訂貨號 Order	模數 Module	L	L2	齒數 Tooth No	B	A0	A1	D	I	孔數 Hole No.	A	C1	C2	E	D1	I1	C3	總齒距誤差 Pitch Error /300mm
270152005	1.5	500.00	6.7	100	17	17	15.5	62.5	125	4	7	7	11	7	31.7	436.6	5.7	
270152010	1.5	1000.00	6.7	200	17	17	15.5	62.5	125	8	7	7	11	7	31.7	936.6	5.7	
270152005	1.5	500.00	6.7	100	19	19	15.5	62.5	125	4	7	7	11	7	31.7	436.6	5.7	
270152010	1.5	1000.00	6.7	200	19	19	15.5	62.5	125	8	7	7	11	7	31.7	936.6	5.7	
270202005	2	500.00	8.9	75	25	24	22	62.5	125	4	8	7	11	7	31.7	436.6	5.7	
270202010	2	1000.00	8.9	150	25	24	22	62.5	125	8	8	7	11	7	31.7	936.6	5.7	
270302005	3	500.00	10.6	50	30	29	26	62.5	125	4	9	10	15	9	35.0	430.0	7.7	
270302010	3	1000.00	10.6	100	30	29	26	62.5	125	8	9	10	15	9	35.0	930.0	7.7	
270402005	4	506.67	14.2	38	40	39	35	62.5	125	4	12	10	15	9	33.3	433.0	7.7	
270402010	4	1000.00	14.2	75	40	39	35	62.5	125	8	12	10	15	9	33.3	933.4	7.7	
270502005	5	500.00	17.4	30	50	39	34	62.5	125	4	12	14	20	13	37.5	425.0	11.7	
270502010	5	1000.00	17.4	60	50	39	34	62.5	125	8	12	14	20	13	37.5	925.0	11.7	
270602005	6	500.00	20.9	25	59	49	43	62.5	125	4	16	18	26	17	37.5	425.0	15.7	
270602010	6	1000.00	20.9	50	59	49	43	62.5	125	8	16	18	26	17	37.5	925.0	15.7	
270802005	8	480.00	28.0	18	79	79	71	60.0	120	4	25	22	33	21	120.0	240.0	19.7	
270802010	8	960.00	28.0	36	79	79	71	60.0	120	8	25	22	33	21	120.0	720.0	19.7	
271002010	10	1000.00	35.11	30	99	99	89	62.5	125	8	32	33	48	32	125.0	750.0	19.7	

**制程說明:**

精度等級: (JIS3級) 符合DIN7e25

材料: (S45C中碳鋼) C45

齒型: 斜齒

齒面處理: 精銑

硬度處理: 硬度HRC18~22度

四面磨削: 有

右旋角: 19° 31'42"

壓力角: 20度

**Manufacturing Description:**

Precision Grade:(JIS Grade3)DIN 7e25

Material:(S45C Medium Carbon Steel)C45

Type:Helical Rack

Treatment of Teeth:Milled

Hardness:HRC18~22degree

Sides Ground: Included.

Right Hand Angle: 19° 31'42"

Pressure Angle:20degree

\*亦供應無鑽孔的齒條,請于型號後加註 "N" 的如270202110N.

\*不同尺寸與材質以依照圖面客制化。

\*總齒距誤差: 每300毫米齒距累積量誤差的最大值。

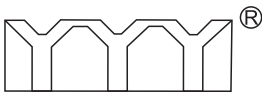
\*Racks without holes are also available.Note "N" in the end of code number .i.e270202110N.

\*Other Dimensions/Materials could be customized by drawings.

\*Pitch Error:total pitch error per 300mm.

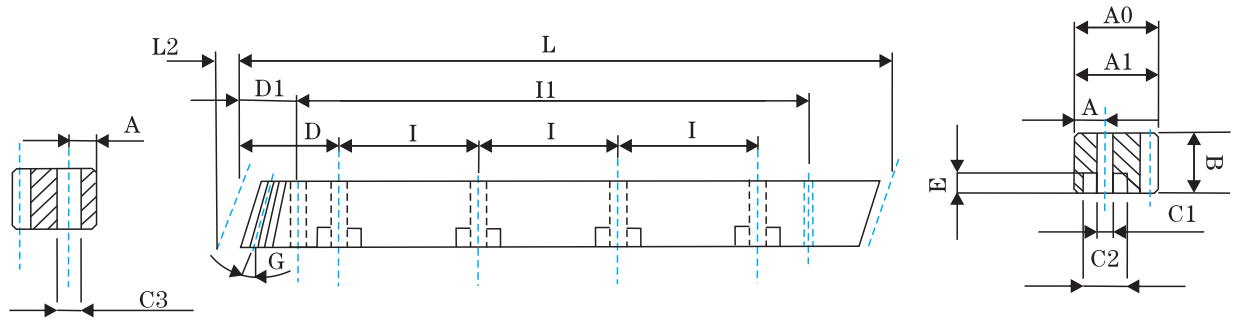
此樣本中的所有產品型號及參數如有變更恕不另行通告, 訂貨前請與本公司聯絡確認, 可按要求訂制





**Three Y** · SaV

可任意连续拼接，模数为1.5-12齿条



單位/Dimension:mm

訂貨號 Order	模數 Module	L	L2	齒數 Tooth No	B	A0	A1	D	I	孔數 Hole No.	A	C1	C2	E	D1	I1	C3	總齒距誤差 Pitch Error /300mm
280152005	1.5	500.00	6.7	100	17	17	15.5	62.5	125	4	7	7	11	7	31.7	436.6	5.7	0.042
280152010	1.5	1000.00	6.7	200	17	17	15.5	62.5	125	8	7	7	11	7	31.7	936.6	5.7	0.042
280152005	1.5	500.00	6.7	100	19	19	15.5	62.5	125	4	7	7	11	7	31.7	436.6	5.7	0.042
280152010	1.5	1000.00	6.7	200	19	19	15.5	62.5	125	8	7	7	11	7	31.7	936.6	5.7	0.042
280202005	2	500.00	8.9	75	25	24	22	62.5	125	4	8	7	11	7	31.7	436.6	5.7	0.044
280202010	2	1000.00	8.9	150	25	24	22	62.5	125	8	8	7	11	7	31.7	936.6	5.7	0.044
280302005	3	500.00	10.6	50	30	29	26	62.5	125	4	9	10	15	9	35.0	430.0	7.7	0.046
280302010	3	1000.00	10.6	100	30	29	26	62.5	125	8	9	10	15	9	35.0	930.0	7.7	0.046
280402005	4	506.67	14.2	38	40	39	35	62.5	125	4	12	10	15	9	33.3	433.0	7.7	0.048
280402010	4	1000.00	14.2	75	40	39	35	62.5	125	8	12	10	15	9	33.3	933.4	7.7	0.048
280502005	5	500.00	17.4	30	50	39	34	62.5	125	4	12	14	20	13	37.5	425.0	11.7	0.050
280502010	5	1000.00	17.4	60	50	39	34	62.5	125	8	12	14	20	13	37.5	925.0	11.7	0.050
280602005	6	500.00	20.9	25	59	49	43	62.5	125	4	16	18	26	17	37.5	425.0	15.7	0.055
280602010	6	1000.00	20.9	50	59	49	43	62.5	125	8	16	18	26	17	37.5	925.0	15.7	0.055
280802005	8	480.00	28.0	18	79	79	71	60.0	120	4	25	22	33	21	120.0	240.0	19.7	0.060
280802010	8	960.00	28.0	36	79	79	71	60.0	120	8	25	22	33	21	120.0	720.0	19.7	0.060
281002010	10	1000.00	35.11	30	99	99	89	62.5	125	8	32	33	48	32	125.0	750.0	19.7	0.065

**制程說明:**

精度等級: (JIS4級) 符合DIN8e25

材料: (S45C中碳鋼) C45

齒型: 斜齒

齒面處理: 精銑

硬度處理: 硬度HRC18~22度

四面磨削: 無

右旋角: 19° 31'42"

壓力角: 20度

**Manufacturing Description:**

Precision Grade:(JIS Grade4)DIN 8e25

Material:(S45C Medium Carbon Steel)C45

Type:Helical Rack

Treatment of Teeth:Milled

Hardness:HRC18~22 degreeS

Sides Ground: Not Included.

Right Hand Angle: 19° 31'42"

Pressure Angle:20degree

\*亦供應無鑽孔的齒條,請于型號後加註 "N" 的如280202010N.

\*不同尺寸與材質可以依照圖面客制化。

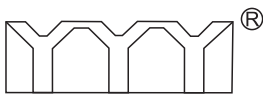
\*總齒距誤差: 每300毫米齒距累積量誤差的最大值。

\*Racks without holes are also available.Note "N" in the end of code number .i.e280202010N.

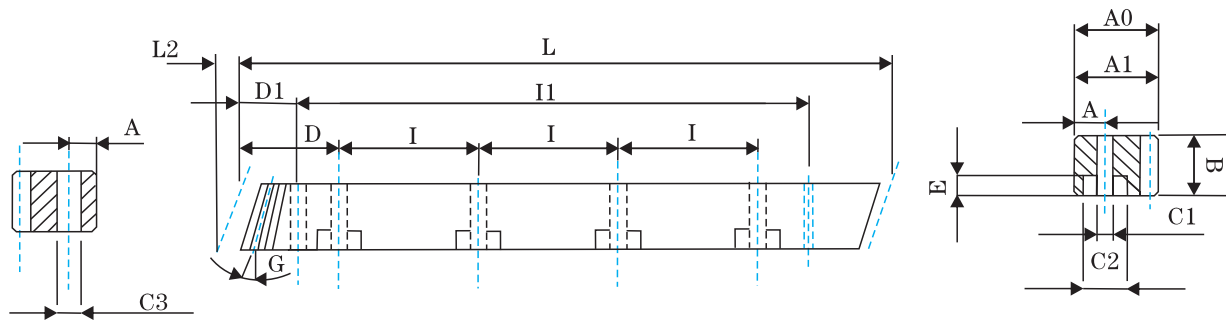
\*Other Dimensions/Materials could be customized by drawings.

\*Pitch Error:total pitch error per 300mm.

此樣本中的所有產品型號及參數如有變更恕不另行通告, 訂貨前請與本公司聯絡確認, 可按要求訂制



# Three Y<sup>®</sup> 可任意连续拼接，模数为1.5-12齿条



單位/Dimension:mm

訂貨號 Order	模數 Module	L	L2	齒數 Tooth No	B	A0	A1	D	I	孔數 Hole No.	A	C1	C2	E	D1	l1	C3	總齒距誤差 Pitch Error /300mm
290152105	1.5	500.00	6.7	100	17	17	15.5	62.5	125	4	7	7	11	7	31.7	436.6	5.7	0.059
290152110	1.5	1000.00	6.7	200	17	17	15.5	62.5	125	8	7	7	11	7	31.7	936.6	5.7	0.059
290152105	1.5	500.00	6.7	100	19	19	15.5	62.5	125	4	7	7	11	7	31.7	436.6	5.7	0.059
290152110	1.5	1000.00	6.7	200	19	19	15.5	62.5	125	8	7	7	11	7	31.7	936.6	5.7	0.059
290202105	2	500.00	9.2	75	24	24	22	62.5	125	4	8	7	11	7	31.7	436.6	5.7	0.061
290202110	2	1000.00	9.2	150	24	24	22	62.5	125	8	8	7	11	7	31.7	936.6	5.7	0.061
290302105	3	500.00	11.0	50	30	29	26	62.5	125	4	9	10	15	9	35.0	430.0	7.7	0.065
290302110	3	1000.00	11.0	100	30	29	26	62.5	125	8	9	10	15	9	35.0	930.0	7.7	0.065
290402105	4	506.67	14.5	38	40	39	35	62.5	125	4	12	10	15	9	33.3	433.0	7.7	0.068
290402110	4	1000.00	14.5	75	40	39	35	62.5	125	8	12	10	15	9	33.3	933.4	7.7	0.068
290502105	5	500.00	17.7	30	50	39	34	62.5	125	4	12	14	20	13	37.5	425.0	11.7	0.070
290502110	5	1000.00	17.7	60	50	39	34	62.5	125	8	12	14	20	13	37.5	925.0	11.7	0.070
290602105	6	500.00	21.3	25	60	49	43	62.5	125	4	16	18	26	17	37.5	425.0	15.7	0.072
290602110	6	1000.00	21.3	50	60	49	43	62.5	125	8	16	18	26	17	37.5	925.0	15.7	0.072
290802105	8	480.00	28.7	18	80	79	71	60	120	4	25	22	33	21	120.0	240.0	19.7	0.075
290802110	8	960.00	28.7	36	80	79	71	60	120	8	25	22	33	21	120.0	720.0	19.7	0.075
291002110	10	1000.00	35.11	30	100	99	89	62.5	125	8	32	33	48	32	125.0	750.0	19.7	0.080

**制程說明:**

精度等級: (JIS5級) 符合DIN9e27

材料: (S45C中碳鋼) C45

齒型: 斜齒

齒面處理: 精銑

硬度處理: 硬度HRC43~45度

四面磨削: 有

右旋角: 19° 31'42"

壓力角: 20度

**Manufacturing Description:**

Precision Grade:(JIS Grade5)DIN 9e27

Material:(S45C Medium Carbon Steel)C45

Type:Helical Rack

Treatment of Teeth:Milled

Hardness:High Frequency .HRC43~45 degree

Sides Ground: Included.

Right Hand Angle: 19° 31'42"

Pressure Angle:20degree

\*亦供應無鑽孔的齒條,請于型號後加註“N”的如290202110N.

\*不同尺寸與材質以可依照圖面客制化。

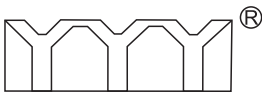
\*總齒距誤差: 每300毫米齒距累積量誤差的最大值。

\*Racks without holes are also available.Note “N” in the end of code number .i.e290202110N.

\*Other Dimensions/Materials could be customized by drawings.

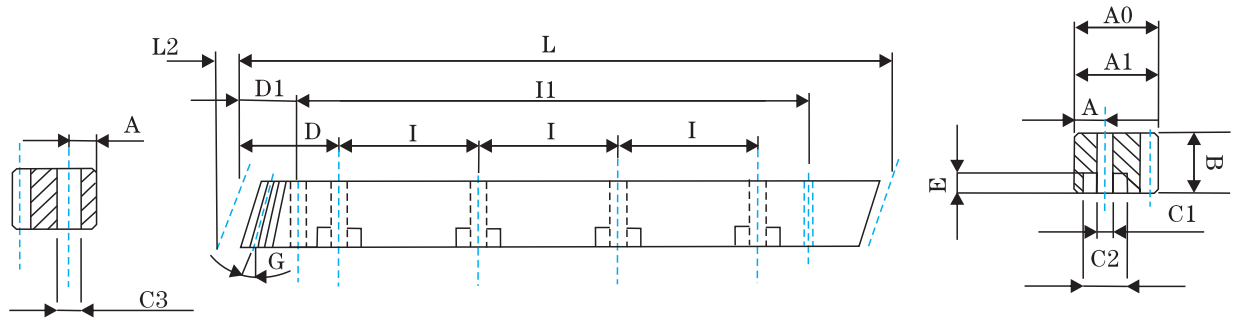
\*Pitch Error:total pitch error per 300mm.

此樣本中的所有產品型號及參數如有變更恕不另行通告, 訂貨前請與本公司聯絡確認, 可按要求訂制



**Three Y** · saV

可任意连续拼接，模数为1.5-12齿条



單位/Dimension:mm

訂貨號 Order	模數 Module	L	L2	齒數 Tooth No	B	A0	A1	D	I	孔數 Hole No.	A	C1	C2	E	D1	I1	C3	總齒距誤差 Pitch Error /300mm
2100152105	1.5	500.00	6.7	100	17	17	15.5	62.5	125	4	7	7	11	7	31.7	436.6	5.7	0.083
2100152110	1.5	1000.00	6.7	200	17	17	15.5	62.5	125	8	7	7	11	7	31.7	936.6	5.7	0.083
2100152105	1.5	500.00	6.7	100	19	19	15.5	62.5	125	4	7	7	11	7	31.7	436.6	5.7	0.083
2100152110	1.5	1000.00	6.7	200	19	19	15.5	62.5	125	8	7	7	11	7	31.7	936.6	5.7	0.083
2100202105	2	500.00	8.5	75	24	24	22	62.5	125	4	8	7	11	7	31.7	436.6	5.7	0.086
2100202110	2	1000.00	8.5	150	24	24	22	62.5	125	8	8	7	11	7	31.7	936.6	5.7	0.086
2100302105	3	500.00	10.3	50	29	29	26	62.5	125	4	9	10	15	9	35.0	430.0	7.7	0.091
2100302110	3	1000.00	10.3	100	29	29	26	62.5	125	8	9	10	15	9	35.0	930.0	7.7	0.091
2100402105	4	506.67	13.8	38	39	39	35	62.5	125	4	12	10	15	9	33.3	433.0	7.7	0.095
2100402110	4	1000.00	13.8	75	39	39	35	62.5	125	8	12	10	15	9	33.3	933.4	7.7	0.095
2100502105	5	500.00	17.4	30	49	39	34	62.5	125	4	12	14	20	13	37.5	425.0	11.7	0.098
2100502110	5	1000.00	17.4	60	49	39	34	62.5	125	8	12	14	20	13	37.5	925.0	11.7	0.098
2100602105	6	500.00	20.9	25	59	49	43	62.5	125	4	16	18	26	17	37.5	425.0	15.7	0.100
2100602110	6	1000.00	20.9	50	59	49	43	62.5	125	8	16	18	26	17	37.5	925.0	15.7	0.100
2100802105	8	480.00	28.0	18	79	79	71	60.0	120	4	25	22	33	21	120.0	240.0	19.7	0.105
2100802110	8	960.00	28.0	36	79	79	71	60.0	120	8	25	22	33	21	120.0	720.0	19.7	0.105
2101002110	10	1000.00	35.11	30	99	99	89	62.5	125	8	32	33	48	32	125.0	750.0	19.7	0.110
2101202110	12	1000	42.56	25	120	120	108	40	125	8	40	39	58	38	102.5	750.0	19.7	0.111

**制程說明:**

精度等級: (JIS6級) 符合DIN10e27

材料: (S45C中碳鋼) C45

齒型: 斜齒

齒面處理: 精銑

硬度處理: 硬度HRC18~22度

四面磨削: 無

右旋角: 19° 31'42"

壓力角: 20度

**Manufacturing Description:**

Precision Grade:(JIS Grade6)DIN 10e27

Material:(S45C Medium Carbon Steel)C45

Type:Helical Rack

Treatment of Teeth:Milled

Hardness:HRC18~22 degreeS

Sides Ground: Not Included.

Right Hand Angle: 19° 31'42"

Pressure Angle:20degree

\*亦供應無鑽孔的齒條,請于型號後加註 "N" 的如280202010N.

\*不同尺寸與材質可以依照圖面客制化。

\*總齒距誤差: 每300毫米齒距累積量誤差的最大值。

\*Racks without holes are also available.Note "N" in the end of code number .i.e280202010N.

\*Other Dimensions/Materials could be customized by drawings.

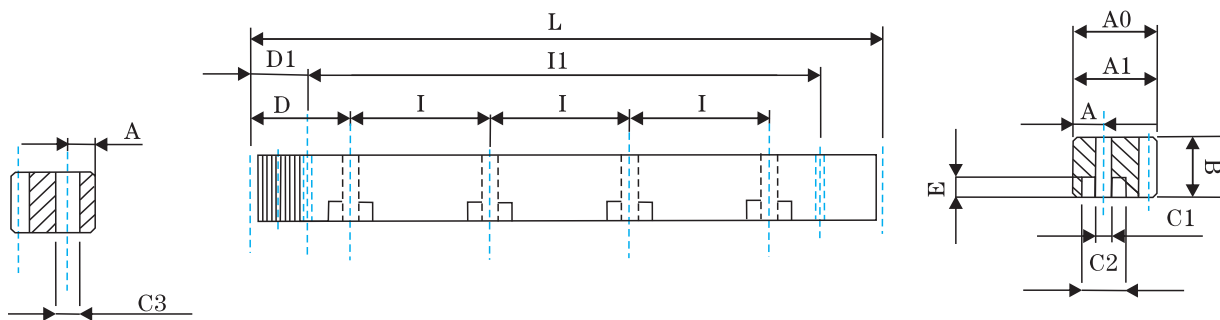
\*Pitch Error:total pitch error per 300mm.

此樣本中的所有產品型號及參數如有變更恕不另行通告, 訂貨前請與本公司聯絡確認, 可按要求訂制



**Three Y** · saV

可任意连续拼接，模数为1.5-12齿条



單位/Dimension:mm

訂貨號 Order	模數 Module	L	齒數 Tooth No	B	A0	A1	D	I	孔數 Hole No.	A	C1	C2	E	D1	I1	C3	總齒距誤差 Pitch Error /300mm
360151105	1.5	499.51	106	17	17	15.5	62.44	124.88	4	7	7	11	7	29.0	441.5	5.7	0.021
360151110	1.5	999.03	212	17	17	15.5	62.44	124.89	8	7	7	11	7	29.0	941.0	5.7	0.021
360151105	1.5	499.51	106	19	19	15.5	62.44	124.88	4	7	7	11	7	29.0	441.5	5.7	0.021
360151110	1.5	999.03	212	19	19	15.5	62.44	124.89	8	7	7	11	7	29.0	941.0	5.7	0.021
360201105	2	502.65	80	24	24	22	62.83	125.66	4	8	7	11	7	31.3	440.1	5.7	0.022
360201110	2	1005.31	160	24	24	22	62.83	125.66	8	8	7	11	7	31.3	942.7	5.7	0.022
360301105	3	508.94	54	29	29	26	63.62	127.23	4	9	10	15	9	34.4	440.1	7.7	0.024
360301110	3	1017.88	108	29	29	26	63.62	127.23	8	9	10	15	9	34.4	949.1	7.7	0.024
360401105	4	502.65	40	39	39	35	62.83	125.66	4	12	10	15	9	37.5	427.7	7.7	0.025
360401110	4	1005.31	80	39	39	35	62.83	125.66	8	12	10	15	9	37.5	930.3	7.7	0.025
360501105	5	502.65	32	49	39	34	62.83	125.66	4	12	14	20	13	30.1	442.4	11.7	0.025
360501110	5	1005.31	64	49	39	34	62.83	125.66	8	12	14	20	13	30.1	945	11.7	0.025
360601105	6	508.94	27	59	49	43	63.62	127.23	4	16	18	26	17	31.4	446.1	15.7	0.026
360601110	6	1017.88	54	59	49	43	63.62	127.23	8	16	18	26	17	31.4	955.0	15.7	0.026
360801105	8	502.65	20	79	79	71	62.83	125.66	4	25	22	33	21	26.6	449.5	19.7	0.027
360801110	8	1005.31	40	79	79	71	62.83	125.66	8	25	22	33	21	26.6	952	19.7	0.027
361001110	10	1005.31	32	99	99	89	62.83	125.66	8	32	33	48	32	125.7	753.96	19.7	0.028

**制程說明:**

精度等級: (JIS2級) 符合DIN6h25

材料: (SCM440鉻鉬合金鋼) 42CrM04

齒型: 直齒

齒面處理: 磨削

硬度處理: 高周波, 硬度HRC55-60度

四面磨削: 有

壓力角: 20度

\*亦供應無鑽孔的齒條,請于型號後加注“N”的如360202110N.

\*不同尺寸與材質以可依照圖面客制化。

\*總齒距誤差: 每300毫米齒距累積量誤差的最大值。

**Manufacturing Description:**

Precision Grade:(JIS Grade2)DIN 6h25

Material:(SCM440 chromium molybdenum Alloy steel)42CrM04

Type: Straight Rack

Treatment of Teeth: Ground

Hardness: High Frequency. HRC55-60 degree

Sides Ground: Included.

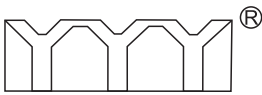
Pressure Angle: 20 degree

\*Racks without holes are also available. Note “N” in the end of code number .i.e.360202110N.

\*Other Dimensions/Materials could be customized by drawings.

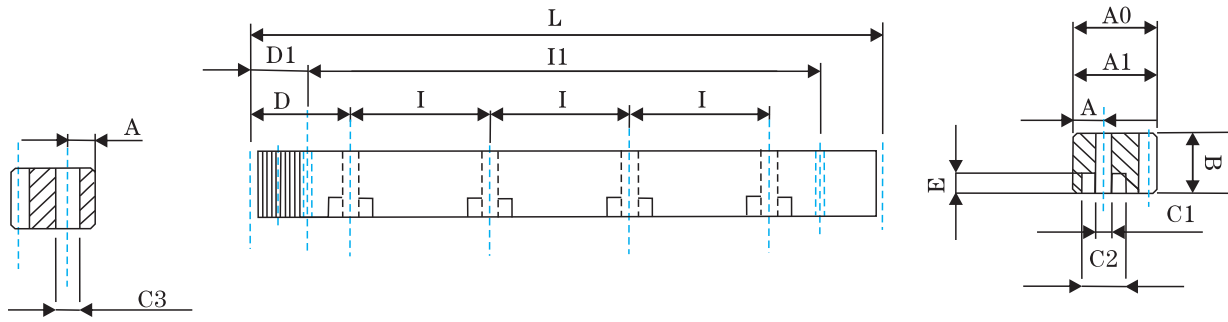
\*Pitch Error: total pitch error per 300mm.

此樣本中的所有產品型號及參數如有變更恕不另行通告, 訂貨前請與本公司聯絡確認, 可按要求訂制



**Three Y** · SaV

可任意连续拼接，模数为1.5-12齿条



單位/Dimension:mm

訂貨號 Order	模數 Module	L	齒數 Tooth No	B	A0	A1	D	I	孔數 Hole No.	A	C1	C2	E	D1	I1	C3	總齒距誤差 Pitch Error /300mm
370151005	1.5	499.51	106	17	17	15.5	62.44	124.88	4	7	7	11	7	29.0	441.5	5.7	
370151010	1.5	999.03	212	17	17	15.5	62.44	124.88	8	7	7	11	7	29.0	941.0	5.7	
370151005	1.5	499.51	106	19	19	15.5	62.44	124.88	4	7	7	11	7	29.0	441.5	5.7	
370151010	1.5	999.03	212	19	19	15.5	62.44	124.88	8	7	7	11	7	29.0	941.0	5.7	
370201005	2	502.65	80	25	24	22	62.83	125.66	4	8	7	11	7	31.3	440.1	5.7	
370201010	2	1005.31	160	25	24	22	62.83	125.66	8	8	7	11	7	31.3	942.7	5.7	
370301005	3	508.94	54	30	29	26	63.62	127.23	4	9	10	15	9	34.4	440.1	7.7	
370301010	3	1017.88	108	30	29	26	63.62	127.23	8	9	10	15	9	34.4	949.1	7.7	
370401005	4	502.65	40	40	39	35	62.83	125.66	4	12	10	15	9	37.5	427.7	7.7	
370401010	4	1005.31	80	40	39	35	62.83	125.66	8	12	10	15	9	37.5	930.3	7.7	
370501005	5	502.65	32	49	39	34	62.83	125.66	4	12	14	20	13	30.1	442.4	11.7	
370501010	5	1005.31	64	49	39	34	62.83	125.66	8	12	14	20	13	30.1	945.0	11.7	
370601005	6	508.94	27	59	49	43	63.62	127.23	4	16	18	26	17	31.4	446.1	15.7	
370601010	6	1017.88	54	59	49	43	63.62	127.23	8	16	18	26	17	31.4	955.0	15.7	
370801005	8	502.65	20	79	79	71	62.83	125.66	4	25	22	33	21	26.6	449.5	19.7	
370801010	8	1005.31	40	79	79	71	62.83	125.66	8	25	22	33	21	26.6	952.0	19.7	
371001010	10	1005.31	32	99	99	89	62.83	125.66	8	32	33	48	32	125.7	753.96	19.7	

制程說明:

精度等級: (JIS3級) 符合DIN7h25

材料: (SCM440鉻鉬合金鋼) 42CrM04

齒型: 直齒

齒面處理: 磨削

硬度處理: 調直硬度HRC21~24度

四面磨削: 有

壓力角: 20度...

\*亦供應無鑽孔的齒條,請于型號後加註“N”的如370201010N.

\*不同尺寸與材質可以依照圖面客制化。

\*總齒距誤差: 每300毫米齒距累積量誤差的最大值。

Manufacturing Description:

Precision Grade:(JIS Grade3)DIN 7e25

Material:(SCM440 chromium molybdenum Alloy steel)42CrM04

Type:Straight Rack

Treatment of Teeth:Milled

Hardness:Qyebcged HRC21-24degree

Sides Ground: Included.

Pressure Angle:20degree

\*Racks without holes are also available.Note “N” in the end of code numner .i.e.370201010N.

\*Other Dimensions/Materials could be customized by drawings.

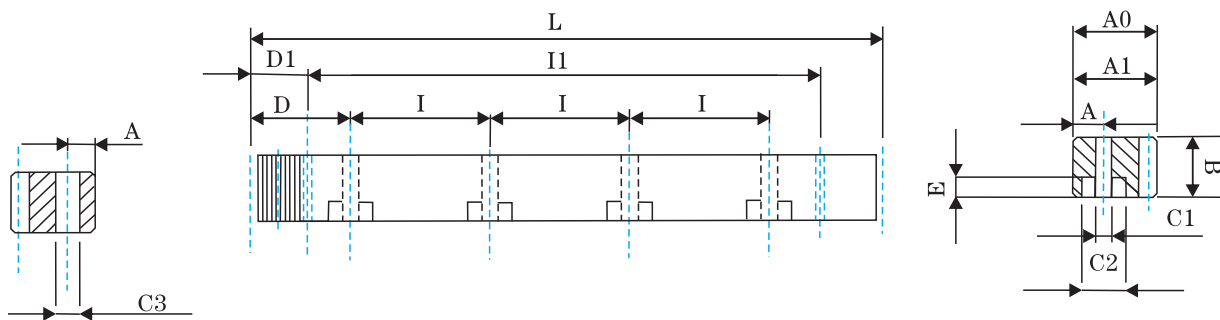
\*Pitch Error:total pitch error per 300mm.

此樣本中的所有產品型號及參數如有變更恕不另行通告, 訂貨前請與本公司聯絡確認, 可按要求訂制



**Three Y** · saV

可任意连续拼接，模数为1.5-12齿条



單位/Dimension:mm

訂貨號 Order	模數 Module	L	齒數 Tooth No	B	A0	A1	D	I	孔數 Hole No.	A	C1	C2	E	D1	I1	C3	總齒距誤差 Pitch Error /300mm
380151005	1.5	499.51	106	17	17	15.5	62.44	124.88	4	7	7	11	7	29.0	441.5	5.7	0.042
380151010	1.5	999.03	212	17	17	15.5	62.44	124.88	8	7	7	11	7	29.0	941.0	5.7	0.042
380151005	1.5	499.51	106	19	19	15.5	62.44	124.88	4	7	7	11	7	29.0	441.5	5.7	0.042
380151010	1.5	999.03	212	19	19	15.5	62.44	124.88	8	7	7	11	7	29.0	941.0	5.7	0.042
380201005	2	502.65	80	25	24	22	62.83	125.66	4	8	7	11	7	31.3	440.1	5.7	0.044
380201010	2	1005.31	160	25	24	22	62.83	125.66	8	8	7	11	7	31.3	942.7	5.7	0.044
380301005	3	508.94	54	30	29	26	63.62	127.23	4	9	10	15	9	34.4	440.1	7.7	0.046
380301010	3	1017.88	108	30	29	26	63.62	127.23	8	9	10	15	9	34.4	949.1	7.7	0.046
380401005	4	502.65	40	40	39	35	62.83	125.66	4	12	10	15	9	37.5	427.7	7.7	0.048
380401010	4	1005.31	80	40	39	35	62.83	125.66	8	12	10	15	9	37.5	930.3	7.7	0.048
380501005	5	502.65	32	49	39	34	62.83	125.66	4	12	14	20	13	30.1	442.4	11.7	0.050
380501010	5	1005.31	64	49	39	34	62.83	125.66	8	12	14	20	13	30.1	945	11.7	0.050
380601005	6	508.94	27	59	49	43	63.62	127.23	4	16	18	26	17	31.4	446.1	15.7	0.055
380601010	6	1017.88	54	59	49	43	63.62	127.23	8	16	18	26	17	31.4	955.0	15.7	0.055
380801005	8	502.65	20	79	79	71	62.83	125.66	4	25	22	33	21	26.6	449.5	19.7	0.060
380801010	8	1005.31	40	79	79	71	62.83	125.66	8	25	22	33	21	26.6	952	19.7	0.060
381001010	10	1005.31	32	99	99	89	62.83	125.66	8	32	33	48	32	125.7	753.96	19.7	0.065

制程說明:

精度等級: (JIS4級) 符合DIN8e27

材料: (SCM440鉻鉬合金鋼) 42CrM04

齒型: 直齒

齒面處理: 精銑

硬度處理: 調直硬度HRC21~24度

四面磨削: 無

壓力角: 20度...

\*亦供應無鑽孔的齒條,請于型號後加註“N”的如380201010N.

\*不同尺寸與材質可以依照圖面客制化。

\*總齒距誤差: 每300毫米齒距累積量誤差的最大值。

Manufacturing Description:

Precision Grade:(JIS Grade4)DIN 8e27

Material:(SCM440 chromium molybdenum Alloy steel)42CrM04

Type: Straight Rack

Treatment of Teeth: Milled

Hardness: Qyebcged HRC21-24degree

Sides Ground: no Included.

Pressure Angle: 20degree

\*Racks without holes are also available. Note “N” in the end of code number. i.e. 380201010N.

\*Other Dimensions/Materials could be customized by drawings.

\*Pitch Error: total pitch error per 300mm.

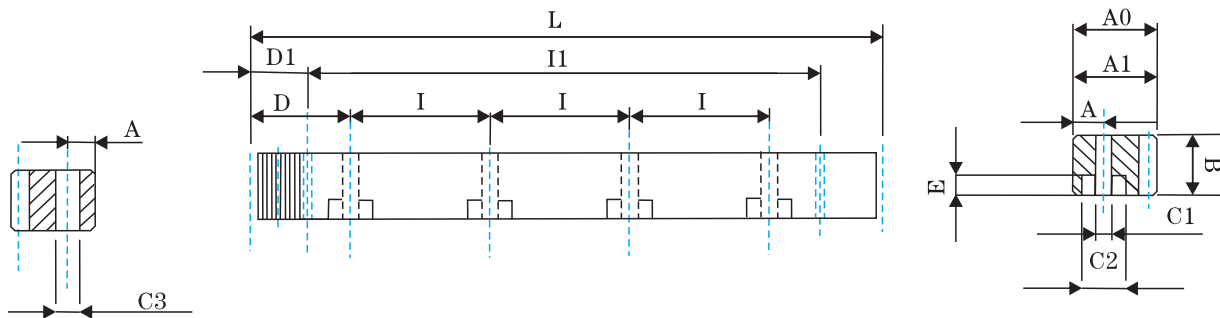
此樣本中的所有產品型號及參數如有變更恕不另行通告, 訂貨前請與本公司聯絡確認, 可按要求訂制





**Three Y** · SaV

可任意连续拼接，模数为1.5-12齿条



單位/Dimension:mm

訂貨號 Order	模數 Module	L	齒數 Tooth No	B	A0	A1	D	I	孔數 Hole No.	A	C1	C2	E	D1	I1	C3	總齒距誤差 Pitch Error /300mm
390151105	1.5	499.51	106	17	17	15.5	62.44	124.88	4	7	7	11	7	29.0	441.5	5.7	0.058
390151110	1.5	999.03	212	17	17	15.5	62.44	124.88	8	7	7	11	7	29.0	941.0	5.7	0.058
390151105	1.5	499.51	106	19	19	15.5	62.44	124.88	4	7	7	11	7	29.0	441.5	5.7	0.058
390151110	1.5	999.03	212	19	19	15.5	62.44	124.88	8	7	7	11	7	29.0	941.0	5.7	0.058
390201105	2	502.65	80	24	24	18	62.83	125.66	4	8	7	11	7	31.3	440.1	5.7	0.059
390201110	2	999.03	159	24	24	18	62.83	125.66	8	8	7	11	7	31.3	942.7	5.7	0.059
390301105	3	508.94	54	29	29	27	63.62	127.23	4	9	10	15	9	34.4	440.1	7.7	0.065
390301110	3	1017.88	108	29	29	27	63.62	127.23	8	9	10	15	9	34.4	949.1	7.7	0.065
390401105	4	502.65	40	39	39	36	62.83	125.66	4	12	10	15	9	37.5	427.7	7.7	0.068
390401110	4	1005.31	80	39	39	36	62.83	125.66	8	12	10	15	9	37.5	930.3	7.7	0.068
390501105	5	502.65	32	49	39	35	62.83	125.66	4	12	14	20	13	30.1	442.4	11.7	0.070
390501110	5	1005.31	64	49	39	35	62.83	125.66	8	12	14	20	13	30.1	945	11.7	0.070
390601105	6	508.94	27	59	49	44	63.62	127.23	4	16	18	26	17	31.4	446.1	15.7	0.072
390601110	6	1017.88	54	59	49	44	63.62	127.23	8	16	18	26	17	31.4	955.0	15.7	0.072
390801105	8	502.65	20	79	79	71.5	62.83	125.66	4	25	22	33	21	26.6	449.5	19.7	0.075
390801110	8	1005.31	40	79	79	71.5	62.83	125.66	8	25	22	33	21	26.6	952	19.7	0.075
391001110	10	1005.31	32	99	99	89	62.83	125.66	8	32	33	48	32	125.7	753.96	19.7	0.080

**制程說明:**

精度等級: (JIS5級) 符合DIN9e27

材料: (SCM440鉻鉬合金鋼) 42CrM04

齒型: 直齒

齒面處理: 精銑

硬度處理: 高周波, 硬度為HRC55~60度

四面磨削: 有

壓力角: 20度

\*亦供應無鑽孔的齒條, 請于型號後加注 "N" 的如390201110N.

\*不同尺寸與材質以可依照圖面客制化。

\*總齒距誤差: 每300毫米齒距累積量誤差的最大值。

**Manufacturing Description:**

Precision Grade:(JIS Grade4)DIN 9e27

Material:(SCM440 chromium molybdenum Alloy steel)42CrM04

Type:Straight Rack

Treatment of Teeth:Milled

Hardness:High Frecluded HRC55~60degree

Sides Ground: Included.

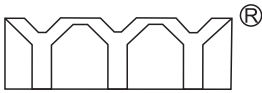
Pressure Angle:20degree

\*Racks without holes are also available.Note "N" in the end of code number .i.e.390201110N.

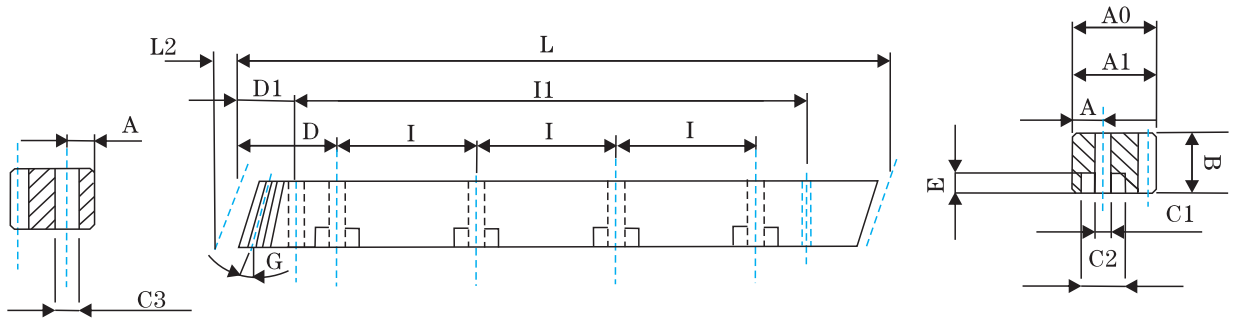
\*Other Dimensions/Materials could be customized by drawings.

\*Pitch Error:total pitch error per 300mm.

此樣本中的所有產品型號及參數如有變更恕不另行通告, 訂貨前請與本公司聯絡確認, 可按要求定制



# Three Y<sup>®</sup> 可任意连续拼接，模数为1.5-12齿条



單位/Dimension:mm

訂貨號 Order	模數 Module	L	L2	齒數 Tooth No	B	A0	A1	D	I	孔數 Hole No.	A	C1	C2	E	D1	I1	C3	總齒距誤差 Pitch Error /300mm
360152105	1.5	500.00	6.7	100	17	17	15.5	62.50	125	4	7	7	11	7	31.7	436.6	5.7	0.021
360152110	1.5	1000.00	6.7	200	17	17	15.5	62.50	125	8	7	7	11	7	31.7	936.6	5.7	0.021
360152105	1.5	500.00	6.7	100	19	19	15.5	62.50	125	4	7	7	11	7	31.7	436.6	5.7	0.021
360152110	1.5	1000.00	6.7	200	19	19	15.5	62.50	125	8	7	7	11	7	31.7	936.6	5.7	0.021
360202105	2	500.00	8.5	75	24	24	22	62.50	125	4	8	7	11	7	31.7	436.6	5.7	0.022
360202110	2	1000.00	8.5	150	24	24	22	62.50	125	8	8	7	11	7	31.7	936.6	5.7	0.022
360302105	3	500.00	10.3	50	29	29	26	62.50	125	4	9	10	15	9	35.0	430.0	7.7	0.024
360302110	3	1000.00	10.3	100	29	29	26	62.50	125	8	9	10	15	9	35.0	930.0	7.7	0.024
360402105	4	506.67	13.8	38	39	39	35	62.50	125	4	12	10	15	9	33.3	433.0	7.7	0.024
360402110	4	1000.00	13.8	75	39	39	35	62.50	125	8	12	10	15	9	33.3	933.4	7.7	0.024
360502105	5	500.00	17.4	30	49	49	34	62.50	125	4	12	14	20	13	37.5	425.0	11.7	0.025
360502110	5	1000.00	17.4	60	49	49	34	62.50	125	8	12	14	20	13	37.5	925.0	11.7	0.025
360602105	6	500.00	20.9	25	59	49	43	62.50	125	4	16	18	26	17	37.5	425.0	15.7	0.026
360602110	6	1000.00	20.9	50	59	49	43	62.50	125	8	16	18	26	17	37.5	925.0	15.7	0.026
360802105	8	480.00	28.0	18	79	79	71	60.00	120	4	25	22	33	21	120.0	240.0	19.7	0.027
360802110	8	960.00	28.0	36	79	79	71	60.00	120	8	25	22	33	21	120.0	720.0	19.7	0.027
361002110	10	1000.00	35.11	30	99	99	89	62.50	125	8	32	33	48	32	125.0	750.0	19.7	0.028

**制程說明：**

精度等級：(JIS2級)符合DIN6h25  
 材料：(SCM440鉻鉬合金鋼)42CrM04  
 齒型：斜齒  
 齒面處理：磨削  
 硬度處理：高周波，硬度分HRC55~60度  
 四面磨削：有  
 右旋角：19° 31`42"  
 壓力角：20度

\*亦供應無鑽孔的齒條，請于型號後加註“N”的如360202110N。  
 \*不同尺寸與材質以可依照圖面客制化。  
 \*總齒距誤差：每300毫米齒距累積量誤差的最大值。

**Manufacturing Description:**

Precision Grade:(JIS Grade2)DIN 6h25  
 Material:(SCM440 Chromium Molybdenum Alloy Steel)42CrM04  
 Type:Helical Rack  
 Treatment of Teeth:Ground  
 Hardness:High Frequency HRC55~60degree  
 Sides Ground: Included.  
 Right Hand Angle: 19° 31`42"  
 Pressure Angle:20degree

\*Racks without holes are also available.Note “N” in the end of code number .i.e.360202110N.  
 \*Other Dimensions/Materials could be customized by drawings.  
 \*Pitch Error:total pitch error per 300mm.

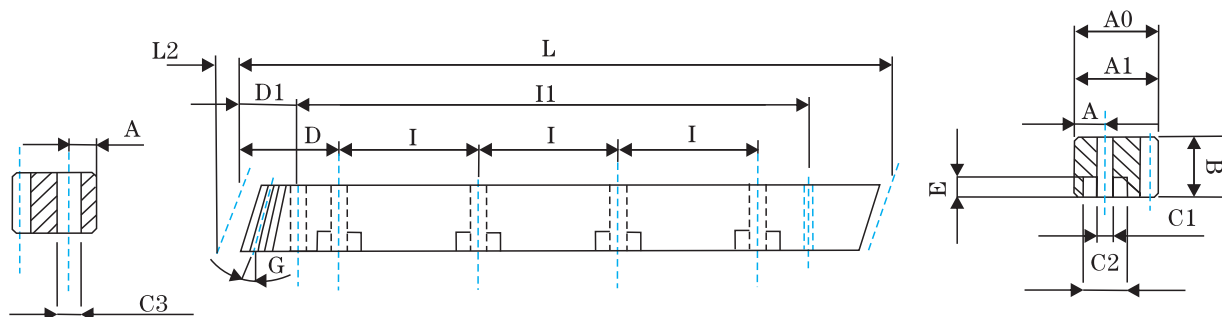
此樣本中的所有產品型號及參數如有變更恕不另行通告，訂貨前請與本公司聯絡確認，可按要求訂制





**Three Y** · SaV

可任意连续拼接，模数为1.5-12齿条



單位/Dimension:mm

訂貨號 Order	模數 Module	L	L2	齒數 Tooth No	B	A0	A1	D	I	孔數 Hole No.	A	C1	C2	E	D1	I1	C3	總齒距誤差 Pitch Error /300mm
370152005	1.5	500.00	6.7	100	17	17	15.5	62.5	125	4	7	7	11	7	31.7	436.6	5.7	
370152010	1.5	1000.00	6.7	200	17	17	15.5	62.5	125	8	7	7	11	7	31.7	936.6	5.7	
370152005	1.5	500.00	6.7	100	19	19	15.5	62.5	125	4	7	7	11	7	31.7	436.6	5.7	
370152010	1.5	1000.00	6.7	200	19	19	15.5	62.5	125	8	7	7	11	7	31.7	936.6	5.7	
370202005	2	500.00	8.9	75	25	24	22	62.5	125	4	8	7	11	7	31.7	436.6	5.7	
370202010	2	1000.00	8.9	150	25	24	22	62.5	125	8	8	7	11	7	31.7	936.6	5.7	
370302005	3	500.00	10.6	50	30	29	26	62.5	125	4	9	10	15	9	35.0	430.0	7.7	
370302010	3	1000.00	10.6	100	30	29	26	62.5	125	8	9	10	15	9	35.0	930.0	7.7	
370402005	4	506.67	14.2	38	40	39	35	62.5	125	4	12	10	15	9	33.3	433.0	7.7	
370402010	4	1000.00	14.2	75	40	39	35	62.5	125	8	12	10	15	9	33.3	933.4	7.7	
370502005	5	500.00	17.4	30	50	39	34	62.5	125	4	12	14	20	13	37.5	425.0	11.7	
370502010	5	1000.00	17.4	60	50	39	34	62.5	125	8	12	14	20	13	37.5	925.0	11.7	
370602005	6	500.00	20.9	25	59	49	43	62.5	125	4	16	18	26	17	37.5	425.0	15.7	
370602010	6	1000.00	20.9	50	59	49	43	62.5	125	8	16	18	26	17	37.5	925.0	15.7	
370802005	8	480.00	28.0	18	79	79	71	60.0	120	4	25	22	33	21	120.0	240.0	19.7	
370802010	8	960.00	28.0	36	79	79	71	60.0	120	8	25	22	33	21	120.0	720.0	19.7	
371002010	10	1000.00	35.11	30	99	99	89	62.5	125	8	32	33	48	32	125.0	750.0	19.7	

制程說明：

精度等級：(JIS3級) 符合DIN7e25

材料：(SCM440鉻鉬合金鋼) 42CrM04

齒型：斜齒

齒面處理：精銑

硬度處理：調質處理，硬度HRC21~24度

四面磨削：有

右旋角：19° 31' 42"

壓力角：20度

Manufacturing Description:

Precision Grade:(JIS Grade3)DIN7e25

Material:(SCM440 Chromium Molybdenum Alloy Steel)42CrM04

Type:Helical Rack

Treatment of Teeth:Milled

Hardness: quenched,HRC21~24 degree

Sides Ground:Included.

Right Hand Angle: 19° 31' 42"

Pressure Angle:20degree

\*亦供應無鑽孔的齒條,請于型號後加注“N”的如360202010N.

\*不同尺寸與材質可以依照圖面客制化。

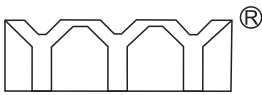
\*總齒距誤差：每300毫米齒距累積量誤差的最大值。

\*Racks without holes are also available.Note “N” in the end of code number .i.e.360202010N.

\*Other Dimensions/Materials could be customized by drawings.

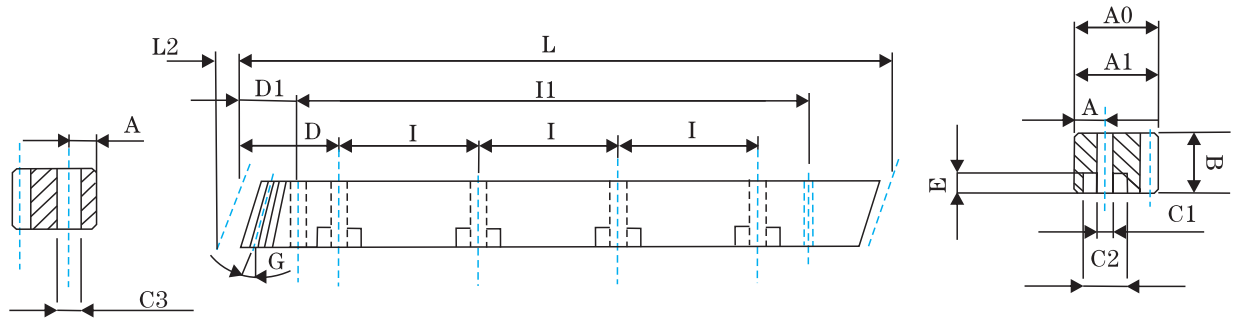
\*Pitch Error:total pitch error per 300mm.

此樣本中的所有產品型號及參數如有變更恕不另行通告，訂貨前請與本公司聯絡確認，可按要求訂制



**Three Y** · saV

可任意连续拼接，模数为1.5-12齿条



單位/Dimension:mm

訂貨號 Order	模數 Module	L	L2	齒數 Tooth No	B	A0	A1	D	I	孔數 Hole No.	A	C1	C2	E	D1	I1	C3	總齒距誤差 Pitch Error /300mm
380152005	1.5	500.00	6.7	100	17	17	15.5	62.5	125	4	7	7	11	7	31.7	436.6	5.7	0.042
380152010	1.5	1000.00	6.7	200	17	17	15.5	62.5	125	8	7	7	11	7	31.7	936.6	5.7	0.042
380152005	1.5	500.00	6.7	100	19	19	15.5	62.5	125	4	7	7	11	7	31.7	436.6	5.7	0.042
380152010	1.5	1000.00	6.7	200	19	19	15.5	62.5	125	8	7	7	11	7	31.7	936.6	5.7	0.042
380202005	2	500.00	8.9	75	25	24	22	62.5	125	4	8	7	11	7	31.7	436.6	5.7	0.044
380202010	2	1000.00	8.9	150	25	24	22	62.5	125	8	8	7	11	7	31.7	936.6	5.7	0.044
380302005	3	500.00	10.6	50	30	29	26	62.5	125	4	9	10	15	9	35.0	430.0	7.7	0.046
380302010	3	1000.00	10.6	100	30	29	26	62.5	125	8	9	10	15	9	35.0	930.0	7.7	0.046
380402005	4	506.67	14.2	38	40	39	35	62.5	125	4	12	10	15	9	33.3	433.0	7.7	0.048
380402010	4	1000.00	14.2	75	40	39	35	62.5	125	8	12	10	15	9	33.3	933.4	7.7	0.048
380502005	5	500.00	17.4	30	50	39	34	62.5	125	4	12	14	20	13	37.5	425.0	11.7	0.050
380502010	5	1000.00	17.4	60	50	39	34	62.5	125	8	12	14	20	13	37.5	925.0	11.7	0.050
380602005	6	500.00	20.9	25	59	49	43	62.5	125	4	16	18	26	17	37.5	425.0	15.7	0.055
380602010	6	1000.00	20.9	50	59	49	43	62.5	125	8	16	18	26	17	37.5	925.0	15.7	0.055
380802005	8	480.00	28.0	18	79	79	71	60.0	120	4	25	22	33	21	120.0	240.0	19.7	0.060
380802010	8	960.00	28.0	36	79	79	71	60.0	120	8	25	22	33	21	120.0	720.0	19.7	0.060
381002010	10	1000.00	35.11	30	99	99	89	62.5	125	8	32	33	48	32	125.0	750.0	19.7	0.065

**制程說明:**

精度等級: (JIS4級) 符合DIN8e27  
 材料: (SCM440鉻鉬合金鋼) 42CrM04  
 齒型: 斜齒  
 齒面處理: 精銑  
 硬度處理: 調質處理, 硬度HRC21-24度  
 四面磨削: 無  
 右旋角: 19° 31' 42"  
 壓力角: 20度

**Manufacturing Description:**

Precision Grade: (JIS Grade4) DIN 8e27  
 Material: (SCM440 Chromium Molybdenum Alloy Steel) 42CrM04  
 Type: Helical Rack  
 Treatment of Teeth: Milled  
 Hardness: quenched HRC21-24 degree  
 Sides Ground: not Included.  
 Right Hand Angle: 19° 31' 42"  
 Pressure Angle: 20 degree

\*亦供應無鑽孔的齒條, 請于型號後加注 "N" 的如380202010N.

\*不同尺寸與材質以可依照圖面客制化。

\*總齒距誤差: 每300毫米齒距累積量誤差的最大值。

\*Racks without holes are also available. Note "N" in the end of code number. i.e. 380202010N.

\*Other Dimensions/Materials could be customized by drawings.

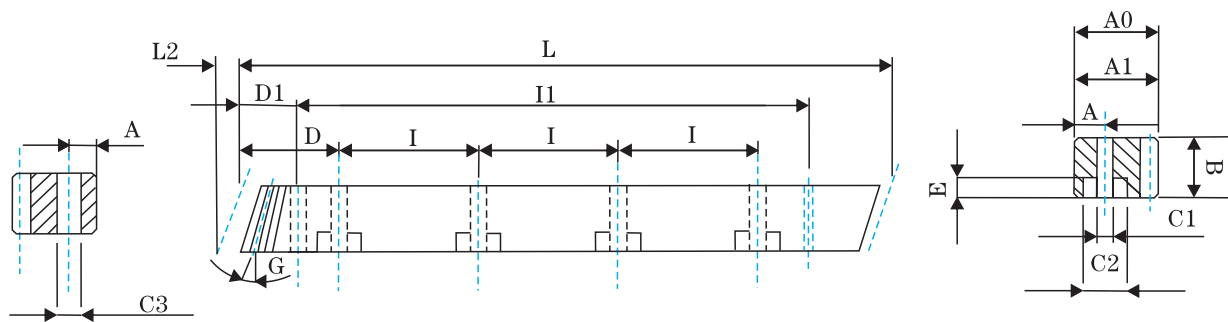
\*Pitch Error: total pitch error per 300mm.

此樣本中的所有產品型號及參數如有變更恕不另行通告, 訂貨前請與本公司聯絡確認, 可按要求訂制



**Three Y** · SaY

可任意连续拼接，模数为1.5-12齿条



單位/Dimension:mm

訂貨號 Order	模數 Module	L	L2	齒數 Tooth No	B	A0	A1	D	I	孔數 Hole No.	A	C1	C2	E	D1	I1	C3	總齒距誤差 Pitch Error /300mm
390152105	1.5	500.00	6.7	100	17	17	15.5	62.5	125	4	7	7	11	7	31.7	436.6	5.7	0.059
390152110	1.5	1000.00	6.7	200	17	17	15.5	62.5	125	8	7	7	11	7	31.7	936.6	5.7	0.059
390152105	1.5	500.00	6.7	100	19	19	15.5	62.5	125	4	7	7	11	7	31.7	436.6	5.7	0.059
390152110	1.5	1000.00	6.7	200	19	19	15.5	62.5	125	8	7	7	11	7	31.7	936.6	5.7	0.059
390202105	2	500.00	9.2	75	24	24	22	62.5	125	4	8	7	11	7	31.7	436.6	5.7	0.061
390202110	2	1000.00	9.2	150	24	24	22	62.5	125	8	8	7	11	7	31.7	936.6	5.7	0.061
390302105	3	500.00	11.0	50	29	29	26	62.5	125	4	9	10	15	9	35.0	430.0	7.7	0.065
390302110	3	1000.00	11.0	100	29	29	26	62.5	125	8	9	10	15	9	35.0	930.0	7.7	0.065
390402105	4	506.67	14.5	38	39	39	35	62.5	125	4	12	10	15	9	33.3	433.0	7.7	0.068
390402110	4	1000.00	14.5	75	39	39	35	62.5	125	8	12	10	15	9	33.3	933.4	7.7	0.068
390502105	5	500.00	17.7	30	49	39	34	62.5	125	4	12	14	20	13	37.5	425.0	11.7	0.070
390502110	5	1000.00	17.7	60	49	39	34	62.5	125	8	12	14	20	13	37.5	925.0	11.7	0.070
390602105	6	500.00	21.3	25	59	49	43	62.5	125	4	16	18	26	17	37.5	425.0	15.7	0.072
390602110	6	1000.00	21.3	50	59	49	43	62.5	125	8	16	18	26	17	37.5	925.0	15.7	0.072
390802105	8	480.00	28.7	18	79	79	71	60.0	120	4	25	22	33	21	120.0	240.0	19.7	0.075
390802110	8	960.00	28.7	36	79	79	71	60.0	120	8	25	22	33	21	120.0	720.0	19.7	0.075
391002110	10	1000.00	35.11	30	99	99	89	62.5	125	8	32	33	48	32	125.0	750.0	19.7	0.080

制程說明：

精度等級：(JIS5級)符合DIN9e27

材料：(SCM440鉻鉬合金鋼)42CrM04

齒型：斜齒

齒面處理：精銑

硬度處理：高周波，硬度HRC55~60度

四面磨削：有

右旋角：19° 31' 42"

壓力角：20度

Manufacturing Description:

Precision Grade:(JIS Grade5)DIN 9e27

Material:(SCM440 Chromium Molybdenum Alloy Steel)42CrM04

Type:Helical Rack

Treatment of Teeth:Milled

Hardness:HRC55~60 degree

Sides Ground: Included.

Right Hand Angle: 19° 31' 42"

Pressure Angle:20degree

\*亦供應無鑽孔的齒條,請于型號後加注“N”的如390202110N.

\*不同尺寸與材質可以依照圖面客制化。

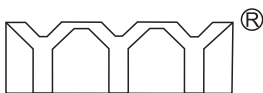
\*總齒距誤差：每300毫米齒距累積量誤差的最大值。

\*Racks without holes are also available.Note “N” in the end of code number i.e.390202110N.

\*Other Dimensions/Materials could be customized by drawings.

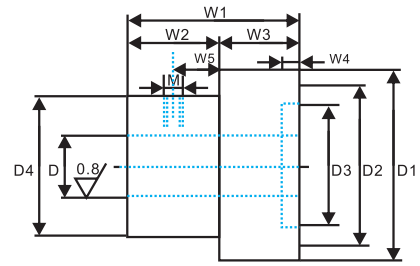
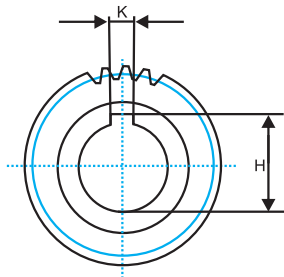
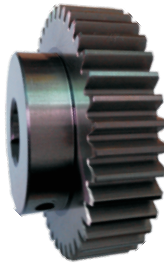
\*Pitch Error:total pitch error per 300mm.

此樣本中的所有產品型號及參數如有變更恕不另行通告，訂貨前請與本公司聯絡確認，可按要求訂制



**ThreeY**®  
SaY

## 磨削齒輪 模數為1.5–12齒輪 Grinding gear modulus of 1.5–12 gear



型號 Code	模數 Module	齒數 Z	D	D1	D2	D3	D4	W1	W2	W3	W4	W5	M	H	K
260151125	1.5	25	14	40.5	37.5	0	30	30	11	19	0	5	6	16	5
260151126	1.5	25	16	40.5	37.5	0	30	30	11	19	0	5	6	18	5
260151132	1.5	32	14	51	48	0	40	32	13	19	0	6	6	16	5
260151132	1.5	32	16	51	48	0	40	32	13	19	0	6	6	18	5
260151140	1.5	40	19	63	60	0	50	32	13	19	0	6	6	21.5	6
260151140	1.5	40	20	63	60	0	50	32	13	19	0	6	6	22.5	6
260151140	1.5	40	22	63	60	0	50	32	13	19	0	6	6	24.5	6
260201125	2	25	14	54	50	0	44	47	22	25	0	11	6	16	5
260201125	2	25	16	54	50	0	44	47	22	25	0	11	6	18	5
260201128	2	28	19	60	56	0	48	53	28	25	0	14	6	21.5	6
260201128	2	28	20	60	56	0	48	53	28	25	0	14	6	22.5	6
260201128	2	28	22	60	56	0	48	53	28	25	0	14	6	24.5	6
260201132	2	32	24	68	64	0	55	53	28	25	0	14	6	27	8
260201132	2	32	25	68	64	0	55	53	28	25	0	14	6	28	8
260201132	2	32	32	68	64	0	55	53	28	25	0	14	6	35	10
260301136	3	36	24	76	72	0	65	53	28	25	0	14	8	27	8
260301136	3	36	25	76	72	0	65	53	28	25	0	14	8	28	8
260301136	3	36	32	76	72	0	65	53	28	25	0	14	8	35	10
260301122	3	22	24	72	66	0	50	52	22	30	0	11	8	27	8
260301122	3	22	25	72	66	0	50	52	22	30	0	11	8	28	8
260301122	3	22	32	72	66	0	50	52	22	30	0	11	8	35	10
260301125	3	25	24	81	75	0	62	58	28	30	0	14	8	27	8
260301125	3	25	25	81	75	0	62	58	28	30	0	14	8	28	8
260301125	3	25	32	81	75	0	62	58	28	30	0	14	8	35	10
260301132	3	32	32	102	96	0	75	58	28	30	0	14	8	35	10
260301132	3	32	40	102	96	0	75	74	44	30	0	22	8	43	12
260401120	4	20	24	88	80	0	65	73	33	40	0	16	8	27	8
260401120	4	20	25	88	80	0	65	73	33	40	0	16	8	28	8
260401120	4	20	32	88	80	0	65	73	33	40	0	16	8	35	10
260401125	4	25	32	108	100	0	80	74	34	40	0	17	8	35	10
260401125	4	25	40	108	100	0	80	74	34	40	0	17	8	43	12
260401132	4	32	32	136	128	0	110	74	34	40	0	17	8	35	10
260201132	4	32	40	136	128	0	110	74	34	40	0	17	8	43	12

精度等級：DIN 6h25(JIS2級)

材料：(S45C中碳鋼)C45

齒型：直齒

齒面處理：磨削

硬度處理：42~45度HRC

壓力角：20度

Precision Grade: DIN 6h25 (JIS Grade 2)

Material: (S45C Medium Carbon Steel)C45

Type: Helical Rack

Treatment of Teeth: Ground

Hardness:42~45degrees HRC

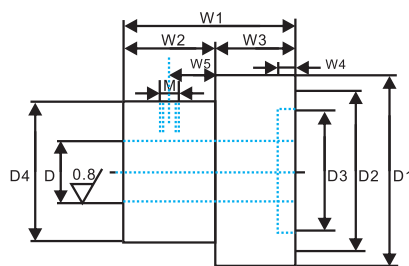
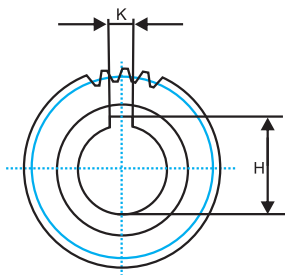
Pressure Angle: 20 degree

注：1、所有尺寸均為毫米  
2、尺寸和其它技術數據可能會有變化，核準數據承索即供



ThreeY<sup>®</sup> SaY

## 磨削齒輪 模數為1.5–12齒輪 Grinding gear modulus of 1.5–12 gear



型號 Code	模數 Module	齒數 Z	D	D1	D2	D3	D4	W1	W2	W3	W4	W5	M	H	K
260152122	1.5	22	14	38.014	35.014	0	26	30	11	19	0	5	6	16	5
260152122	1.5	22	16	38.014	35.014	0	26	30	11	19	0	5	6	18	5
260152130	1.5	30	14	50.747	47.747	0	38	32	13	19	0	5	6	16	5
260152130	1.5	30	16	50.747	47.747	0	38	32	13	19	0	5	6	18	5
260152132	1.5	32	25	53.930	50.930	0	43	34	14	20	0	5	6	29	8
260152135	1.5	35	19	58.704	55.704	0	42	32	13	19	0	5	6	21.5	6
260152135	1.5	35	19	58.704	55.704	0	45	50	26	24	20.8	10	6	21.8	6
260152135	1.5	35	20	58.704	55.704	0	42	32	13	19	0	5	6	22.5	6
260152135	1.5	35	22	58.704	55.704	0	42	32	13	19	0	5	6	24.5	6
260152140	1.5	40	19	66.662	63.662	0	50	32	13	19	0	5	6	21.5	6
260152140	1.5	40	20	66.662	63.662	0	50	32	13	19	0	5	6	22.5	6
260152140	1.5	40	22	66.662	63.662	0	50	32	13	19	0	5	6	24.5	6
260152142	1.5	42	19	69.845	66.845	0	40	38	18	20	0	10	6	22.3	6
260152142	1.5	42	24	69.845	66.845	0	50	50	31	19	0	10	6	27	8
260152142	1.5	42	25	69.845	66.845	0	50	50	31	19	0	10	6	28	8
260152142	1.5	42	32	69.845	66.845	0	50	50	31	19	0	10	6	35	10
260202120	2	20	19	46.441	42.441	0	32	34	12	22	0	10	6	21.8	6
260202121	2	21	20	48.563	44.563	0	36	30	10	20	0	10	6	22.8	6
260202122	2	22	14	50.686	46.686	0	36	47	22	25	0	12	6	16	5
260202122	2	22	16	50.686	46.686	0	36	47	22	25	0	12	6	18	5
260202124	2	24	14	54.930	50.930	32	30	34	16	18	3.5	9	6	16.3	5
260202124	2	24	20	54.930	50.930	32	36	34	16	18	3.5	9	6	22.3	5
260202125	2	25	14	57.052	53.052	0	44	47	22	25	0	12	6	16	5
260202125	2	25	16	57.052	53.052	0	44	47	22	25	0	12	6	18	5
260202128	2	28	19	63.418	59.418	0	50	53	28	25	0	12	6	21.5	6
260202128	2	28	20	63.418	59.418	0	50	53	28	25	0	12	6	22.5	6
260202128	2	28	22	63.418	59.418	0	50	53	28	25	0	12	6	24.5	6
260202130	2	30	19	67.662	63.662	0	54	53	28	25	0	12	6	21.5	6
260202130	2	30	20	67.662	63.662	0	54	53	28	25	0	12	6	22.5	6
260202130	2	30	22	67.662	63.662	0	54	53	28	25	0	12	6	24.5	6

精度等級：DIN 6h25(JIS2級)

材料：(S45C中碳鋼) C45

齒型：斜齒

齒面處理：磨削

硬度處理：42~45度HRC

左旋角：19° 31' 42"

壓力角：20度

Precision Grade: DIN 6h25 (JIS Grade 2)

Material: (S45C Medium Carbon Steel) C45

Type: Helical Rack

Treatment of Teeth: Ground

Hardness: 42~45 degrees HRC

Left Hand Angle: 19° 31' 42"

Pressure Angle: 20 degree

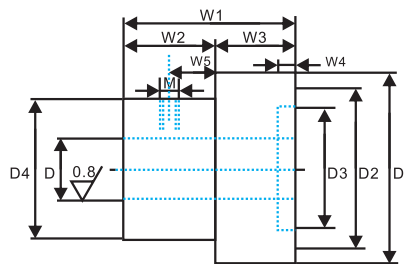
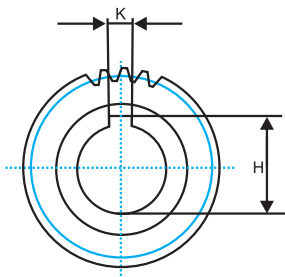
注：1、所有尺寸均為毫米  
2、尺寸和其它技術數據可能有變化，核準數據承索即供





Three Y<sup>®</sup> SaY

## 磨削齒輪 模數為1.5–12齒輪 Grinding gear modulus of 1.5–12 gear



型號 Code	模數 Module	齒數 Z	D	D1	D2	D3	D4	W1	W2	W3	W4	W5	M	H	K
260202132	2	32	22	71.906	67.906	0	50	51	29	22	0	14	6	24.5	6
260202132	2	32	24	71.906	67.906	0	55	53	28	25	0	14	6	27	8
260202132	2	32	25	71.906	67.906	0	55	53	28	25	0	14	6	28	8
260202132	2	32	32	71.906	67.906	0	55	53	28	25	0	14	6	35	10
260202134	2	34	24	76.150	72.150	50	50	38	10	28	5	5	6	27.3	8
260202135	2	35	40	78.272	74.272	0	0	40	0	40	0	0	6	44.5	12
260202136	2	36	24	80.395	76.395	0	65	53	28	25	0	14	6	27	8
260202136	2	36	25	80.395	76.395	0	65	53	28	25	0	14	6	28	8
260202136	2	36	32	80.395	76.395	0	65	53	28	25	0	14	6	35	10
260302118	3	18	19	63.296	57.296	0	45	52	22	30	0	11	8	21.5	6
260302118	3	18	20	63.296	57.296	0	45	52	22	30	0	11	8	22.5	6
260302118	3	18	22	63.296	57.296	0	45	52	22	30	0	11	8	24.5	6
260302122	3	22	24	76.028	70.028	0	50	52	22	30	0	11	8	27	8
260302122	3	22	25	76.028	70.028	0	50	52	22	30	0	11	8	28	8
260302122	3	22	32	76.028	70.028	0	50	52	22	30	0	11	8	35	10
260302125	3	25	24	85.578	79.578	0	62	58	28	30	0	14	8	27	8
260302125	3	25	25	85.578	79.578	0	62	58	28	30	0	14	8	28	8
260302125	3	25	32	85.578	79.578	0	62	58	28	30	0	14	8	35	10
260302130	3	30	32	101.493	95.493	0	70	58	28	30	0	14	8	35	10
260302130	3	30	35	101.493	95.493	0	70	50	22	28	0	11	8	38.3	10
260302130	3	30	40	101.493	95.493	0	70	74	44	30	0	22	8	43	12
260402120	4	20	24	92.883	84.883	0	65	73	33	40	0	16	8	27	8
260402120	4	20	25	92.883	84.883	0	65	73	33	40	0	16	8	28	8
260402120	4	20	32	92.883	84.883	0	65	73	33	40	0	16	8	35	10
260402125	4	25	32	114.103	106.103	0	80	74	34	40	0	17	8	35	10
260402125	4	25	40	114.103	106.103	0	80	74	34	40	0	17	8	43	12
260402130	4	30	32	135.324	127.324	0	110	74	34	40	0	17	8	35	10
260402130	4	30	40	135.324	127.324	0	110	74	34	40	0	17	8	43	12

精度等級：DIN 6h25(JIS2級)

材料：(S45C中碳鋼)C45

齒型：斜齒

齒面處理：磨削

硬度處理：42 ~ 45度HRC

左旋角：19° 31' 42"

壓力角：20度

Precision Grade: DIN 6h25 (JIS Grade 2)

Material: (S45C Medium Carbon Steel)C45

Type: Helical Rack

Treatment of Teeth: Ground

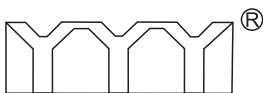
Hardness: 42 ~ 45 degrees HRC

Left Hand Angle: 19° 31' 42"

Pressure Angle: 20 degree

注：1、所有尺寸均為毫米

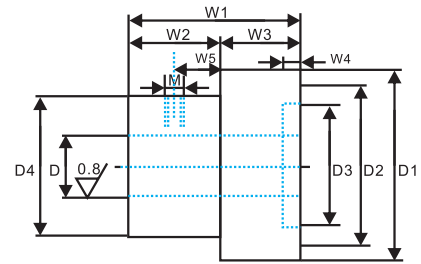
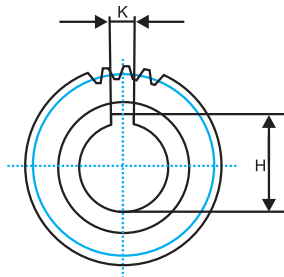
2、尺寸和其它技術數據可能有變化，核準數據承索即供



ThreeY<sup>®</sup> SaY

# 精密齒輪 模數為1.5–12齒輪

## Guiding gear modulus of 1.5–12 gear



型號 Code	模數 Module	齒數 Z	D	D1	D2	D3	D4	W1	W2	W3	W4	W5	M	H	K
290151125	1.5	25	14	40.5	37.5	0	30	30	11	19	0	5	6	16	5
290151125	1.5	25	16	40.5	37.5	0	30	30	11	19	0	5	6	18	5
290151132	1.5	32	14	51	48	0	40	32	13	19	0	6	6	16	5
290151132	1.5	32	16	51	48	0	40	32	13	19	0	6	6	18	5
290151140	1.5	40	19	63	60	0	50	32	13	19	0	6	6	21.5	6
290151140	1.5	40	20	63	60	0	50	32	13	19	0	6	6	22.5	6
290151140	1.5	40	22	63	60	0	50	32	13	19	0	6	6	24.5	6
290201125	2	25	14	54	50	0	44	47	22	25	0	11	6	16	5
290201125	2	25	16	54	50	0	44	47	22	25	0	11	6	18	5
290201128	2	28	19	60	56	0	48	53	28	25	0	14	6	21.5	6
290201128	2	28	20	60	56	0	48	53	28	25	0	14	6	22.5	6
290201128	2	28	22	60	56	0	48	53	28	25	0	14	6	24.5	6
290201132	2	32	24	68	64	0	55	53	28	25	0	14	6	27	8
290201132	2	32	25	68	64	0	55	53	28	25	0	14	6	28	8
290201132	2	32	32	68	64	0	55	53	28	25	0	14	6	35	10
290301136	3	36	24	76	72	0	65	53	28	25	0	14	8	27	8
290301136	3	36	25	76	72	0	65	53	28	25	0	14	8	28	8
290301136	3	36	32	76	72	0	65	53	28	25	0	14	8	35	10
290301122	3	22	24	72	66	0	50	52	22	30	0	11	8	27	8
290301122	3	22	25	72	66	0	50	52	22	30	0	11	8	28	8
290301122	3	22	32	72	66	0	50	52	22	30	0	11	8	35	10
290301125	3	25	24	81	75	0	62	58	28	30	0	14	8	27	8
290301125	3	25	25	81	75	0	62	58	28	30	0	14	8	28	8
290301125	3	25	32	81	75	0	62	58	28	30	0	14	8	35	10
290301132	3	32	32	102	96	0	75	58	28	30	0	14	8	35	10
290301132	3	32	40	102	96	0	75	74	44	30	0	22	8	43	12
290401120	4	20	24	88	80	0	65	73	33	40	0	16	8	27	8
290401120	4	20	25	88	80	0	65	73	33	40	0	16	8	28	8
290401120	4	20	32	88	80	0	65	73	33	40	0	16	8	35	10
260401125	4	25	32	108	100	0	80	74	34	40	0	17	8	35	10
290401125	4	25	40	108	100	0	80	74	34	40	0	17	8	43	12
290401132	4	32	32	136	128	0	110	74	34	40	0	17	8	35	10
290201132	4	32	40	136	128	0	110	74	34	40	0	17	8	43	12

精度等級：DIN 9e27(JIS5級)

材料：(S45C中碳鋼)C45

齒型：直齒

齒面處理：精銑

硬度處理：42~45度HRC

壓力角：20度

Precision Grade: DIN 9e27 (JIS Grade 5)

Material: (S45C Medium Carbon Steel)C45

Type: Helical Rack

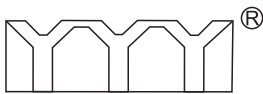
Treatment of Teeth: Milled

Hardness:42~45degrees HRC

Pressure Angle: 20 degree

注：1、所有尺寸均為毫米

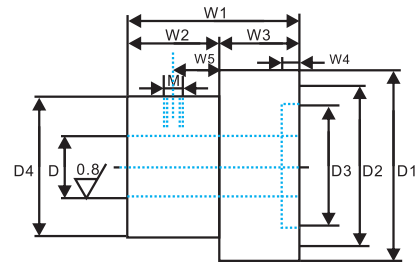
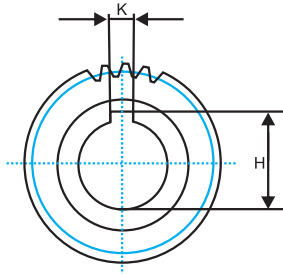
2、尺寸和其它技術數據可能會有變化，核準數據承索即供



**ThreeY**®  
SaY

# 精密齒輪 模數為1.5–12齒輪

## Guiding gear modulus of 1.5–12 gear



型號 Code	模數 Module	齒數 Z	D	D1	D2	D3	D4	W1	W2	W3	W4	W5	M	H	K
290152122	1.5	22	14	38.014	35.014	0	26	30	11	19	0	5	6	16	5
290152122	1.5	22	16	38.014	35.014	0	26	30	11	19	0	5	6	18	5
290152130	1.5	30	14	50.747	47.747	0	38	32	13	19	0	5	6	16	5
290152130	1.5	30	16	50.747	47.747	0	38	32	13	19	0	5	6	18	5
290152132	1.5	32	25	53.930	50.930	0	43	34	14	20	0	5	6	29	8
290152135	1.5	35	19	58.704	55.704	0	42	32	13	19	0	5	6	21.5	6
290152135	1.5	35	19	58.704	55.704	0	45	50	26	24	20.8	10	6	21.8	6
290152135	1.5	35	20	58.704	55.704	0	42	32	13	19	0	5	6	22.5	6
290152135	1.5	35	22	58.704	55.704	0	42	32	13	19	0	5	6	24.5	6
290152140	1.5	40	19	66.662	63.662	0	50	32	13	19	0	5	6	21.5	6
290152140	1.5	40	20	66.662	63.662	0	50	32	13	19	0	5	6	22.5	6
290152140	1.5	40	22	66.662	63.662	0	50	32	13	19	0	5	6	24.5	6
290152142	1.5	42	19	69.845	66.845	0	40	38	18	20	0	10	6	22.3	6
290152142	1.5	42	24	69.845	66.845	0	50	50	31	19	0	10	6	27	8
290152142	1.5	42	25	69.845	66.845	0	50	50	31	19	0	10	6	28	8
290152142	1.5	42	32	69.845	66.845	0	50	50	31	19	0	10	6	35	10
290202120	2	20	19	46.441	42.441	0	32	34	12	22	0	10	6	21.8	6
290202121	2	21	20	48.563	44.563	0	36	30	10	20	0	10	6	22.8	6
290202122	2	22	14	50.686	46.686	0	36	47	22	25	0	12	6	16	5
290202122	2	22	16	50.686	46.686	0	36	47	22	25	0	12	6	18	5
290202124	2	24	14	54.930	50.930	32	30	34	16	18	3.5	9	6	16.3	5
290202124	2	24	20	54.930	50.930	32	36	34	16	18	3.5	9	6	22.3	5
290202125	2	25	14	57.052	53.052	0	44	47	22	25	0	12	6	16	5
290202125	2	25	16	57.052	53.052	0	44	47	22	25	0	12	6	18	5
290202128	2	28	19	63.418	59.418	0	50	53	28	25	0	12	6	21.5	6
290202128	2	28	20	63.418	59.418	0	50	53	28	25	0	12	6	22.5	6
290202128	2	28	22	63.418	59.418	0	50	53	28	25	0	12	6	24.5	6
290202130	2	30	19	67.662	63.662	0	54	53	28	25	0	12	6	21.5	6
290202130	2	30	20	67.662	63.662	0	54	53	28	25	0	12	6	22.5	6
290202130	2	30	22	67.662	63.662	0	54	53	28	25	0	12	6	24.5	6

精度等級：DIN 9e27(JIS5級)

材料：(S45C中碳鋼) C45

齒型：斜齒

齒面處理：精銑

硬度處理：42~45度HRC

左旋角：19° 31' 42"

壓力角：20度

Precision Grade: DIN 9e27 (JIS Grade 5)

Material: (S45C Medium Carbon Steel) C45

Type: Helical Rack

Treatment of Teeth: Milled

Hardness: 42~45 degrees HRC

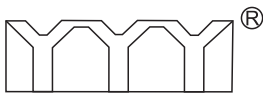
Left Hand Angle: 19° 31' 42"

Pressure Angle: 20 degree

注：1、所有尺寸均為毫米

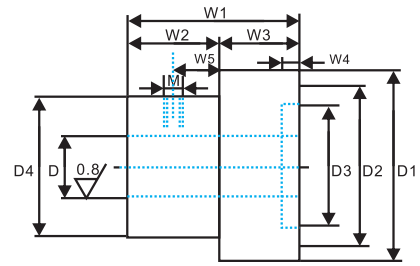
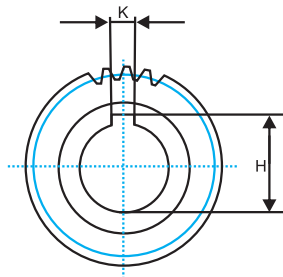
2、尺寸和其它技術數據可能有變化，核準數據承索即供





**ThreeY**®  
SaY

## 精密齒輪 模數為1.5–12齒輪 Guiding gear modulus of 1.5–12 gear



型號 Code	模數 Module	齒數 Z	D	D1	D2	D3	D4	W1	W2	W3	W4	W5	M	H	K
290202132	2	32	22	71.906	67.906	0	50	51	29	22	0	14	6	24.5	6
290202132	2	32	24	71.906	67.906	0	55	53	28	25	0	14	6	27	8
290202132	2	32	25	71.906	67.906	0	55	53	28	25	0	14	6	28	8
290202132	2	32	32	71.906	67.906	0	55	53	28	25	0	14	6	35	10
290202134	2	34	24	76.150	72.150	50	50	38	10	28	5	5	6	27.3	8
290202135	2	35	40	78.272	74.272	0	0	40	0	40	0	0	6	44.5	12
290202136	2	36	24	80.395	76.395	0	65	53	28	25	0	14	6	27	8
290202136	2	36	25	80.395	76.395	0	65	53	28	25	0	14	6	28	8
290202136	2	36	32	80.395	76.395	0	65	53	28	25	0	14	6	35	10
290302118	3	18	19	63.296	57.296	0	45	52	22	30	0	11	8	21.5	6
290302118	3	18	20	63.296	57.296	0	45	52	22	30	0	11	8	22.5	6
290302118	3	18	22	63.296	57.296	0	45	52	22	30	0	11	8	24.5	6
260302122	3	22	24	76.028	70.028	0	50	52	22	30	0	11	8	27	8
290302122	3	22	25	76.028	70.028	0	50	52	22	30	0	11	8	28	8
290302122	3	22	32	76.028	70.028	0	50	52	22	30	0	11	8	35	10
290302125	3	25	24	85.578	79.578	0	62	58	28	30	0	14	8	27	8
290302125	3	25	25	85.578	79.578	0	62	58	28	30	0	14	8	28	8
290302125	3	25	32	85.578	79.578	0	62	58	28	30	0	14	8	35	10
290302130	3	30	32	101.493	95.493	0	70	58	28	30	0	14	8	35	10
290302130	3	30	35	101.493	95.493	0	70	50	22	28	0	11	8	38.3	10
290302130	3	30	40	101.493	95.493	0	70	74	44	30	0	22	8	43	12
290402120	4	20	24	92.883	84.883	0	65	73	33	40	0	16	8	27	8
290402120	4	20	25	92.883	84.883	0	65	73	33	40	0	16	8	28	8
290402120	4	20	32	92.883	84.883	0	65	73	33	40	0	16	8	35	10
290402125	4	25	32	114.103	106.103	0	80	74	34	40	0	17	8	35	10
290402125	4	25	40	114.103	106.103	0	80	74	34	40	0	17	8	43	12
290402130	4	30	32	135.324	127.324	0	110	74	34	40	0	17	8	35	10
290402130	4	30	40	135.324	127.324	0	110	74	34	40	0	17	8	43	12

精度等級：DIN 9e27(JIS5級)

材料：(S45C中碳鋼) C45

齒型：斜齒

齒面處理：精銑

硬度處理：42 ~ 45度HRC

左旋角：19° 31' 42"

壓力角：20度

Precision Grade: DIN 9e27 (JIS Grade 5)

Material: (S45C Medium Carbon Steel) C45

Type: Helical Rack

Treatment of Teeth: Milled

Hardness: 42 ~ 45 degrees HRC

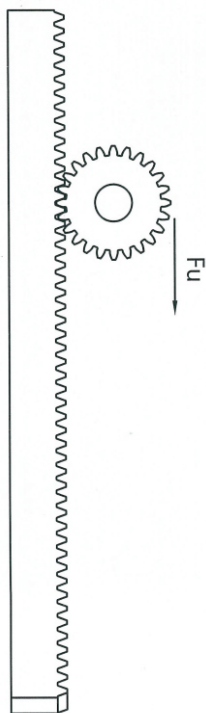
Left Hand Angle: 19° 31' 42"

Pressure Angle: 20 degree

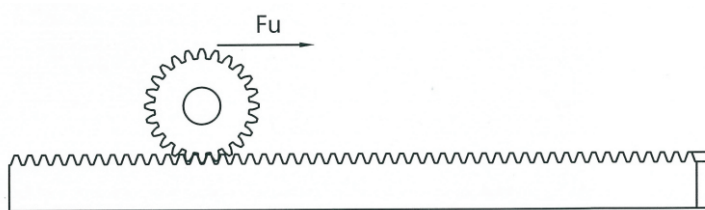
注：1、所有尺寸均為毫米  
2、尺寸和其它技術數據可能有變化，核準數據承索即供



齒條的傳動形式 ( Selection rack and pinion drive )



上升/下降 ( lift/lower )  
 $F_u = m \cdot g + m \cdot a$



水平 ( drive )  
 $F_u = m \cdot g \cdot \mu + m \cdot a$

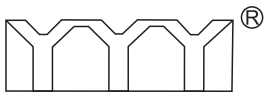
名稱 ( description )	公式 ( formula )	單位 ( dimension )
加速度 ( acceleration )	$a = \frac{v}{t} = \frac{2 \cdot s}{t^2}$	m/s <sup>2</sup>
速度 ( speed )	$v = \frac{s}{t} = \sqrt{2 \cdot a \cdot s}$	m/s
距離 ( distance )	s	m
時間 ( time )	t	s
轉速 ( rpm )	$n = \frac{v \cdot 60}{\pi \cdot d_0}$	1/min
分度圓直徑 ( pitch diameter )	d <sub>0</sub>	mm
扭矩 ( torque )	$M = \frac{F_u \cdot d_0}{2000}$	Nm
功率 ( power )	$p = \frac{M \cdot n}{2000} = \frac{F_u \cdot n \cdot d_0}{2000}$	kw

設計參數

使用系數 1.0  
 齒間連接安全系數 1.0  
 防齒裂安全系數 1.4  
 使用壽命 20,000h

The dimensioning happened with

application factor: 1.0  
 safety for stress at single tooth contact: 1.0  
 safety for tooth root stress: 1.4  
 service life in hours: 20,000h



ThreeY<sup>®</sup> SaY

# 零背隙齒條齒輪

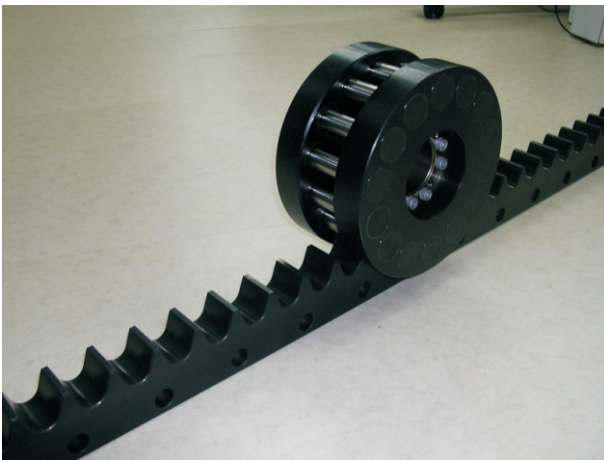
## 日本零背隙齒輪齒條產品



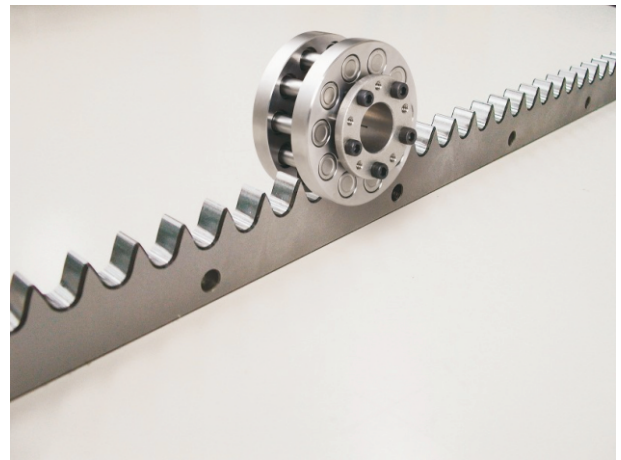
零背隙齒圈



零背隙齒輪

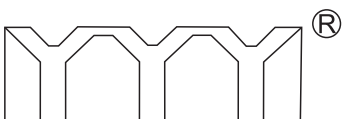


零背隙齒條



零背隙齒條

本公司代理日本零背隙齒條齒輪，齒圈，詳細資料在[www.jingjiegear.com](http://www.jingjiegear.com)中下載或致電全國服務熱線：400-028-8380諮詢了解，零背隙齒條齒輪廣泛應用於工業機器人，機械手，木工機械等行業。



ThreeY<sup>®</sup> SaY

臺灣齒條 齒輪

# 品質 服務 品牌

## 誠信是金 精益求精 杰為卓越



精杰機械股份有限公司

Jing Jie Machinery Co., Ltd.

地址：臺灣臺中縣豐原市大順街8號一巷

E-mail: jingjietw@126.com

<http://www.jingjiegear.com>



官方微信 扫一扫

統一服務熱綫：400-028-8380

代理商：



2015版