





精傑在臺灣有四十余年的生產經驗，提供精密傳動系列零配件，包含精密齒條（齒排）、精密齒輪、行星減速機和全自動潤滑系統。精傑是專業從事精密齒輪齒條製造的公司之一，具有自主製造技術、擁有德國加工設備以及豐富的實踐經驗。

公司擁有自主品牌ThreeY.SaY (YYY)，客戶群體含各行業領域，例如：CNC加工中心機，木工機，機械手，機器人，電池設備，龍門銑床，玻璃機械，自動化設備，自動化上下料機，半導體設備等行業，產品銷往多個國家和地區，得到新老客戶高度認可和好評。

ThreeY.SaY (YYY) 品牌意義：YYY首尾相連，代表著齒條可以一支支無限長度對接，對接處精度誤差可以忽略不計。品牌創立四十余年來，產品主要以精度高，使用壽命長，性價比高而贏得客戶的信賴與支持！

Jingjie has more than 40 years of production experience in Taiwan, providing precision transmission series parts, including precision racks (tooth rows), precision gears, planetary reducers and automatic lubrication systems. Jingjie is one of the companies specializing in the manufacture of precision gears and racks, with independent manufacturing technology, German processing equipment and rich practical experience.

The company has its own brand ThreeY.SaY (YYY), and its customer groups include various industries, such as: CNC machining center machines, woodworking machines, manipulators, robots, battery equipment, gantry milling machines, glass machinery, automation equipment, automatic loading and unloading machines, semiconductors Equipment and other industries, products are sold to many countries and regions, and are highly recognized and praised by new and old customers.

ThreeY.SaY (YYY) brand meaning: YYYs are connected end to end, which means that the rack can be connected with infinite length, and the accuracy error of the connection can be ignored. The brand was founded for more than 40 years, and the products have won the trust and support of customers with high precision, long service life and high cost performance!

品質

服務

品牌

——專注于精密機械傳動領域

索引

Index



齒條型號說明.....P.3
齒條裝配說明.....P.4
精密齒條.....P.5

Rack model description..... P.3
Rack assembly instructions..... P.4
Precision rack..... P.5



齒輪型號說明.....P.13
精密齒輪.....P.14

Gear model description..... P.13
Precision gear..... P.14



潤滑系統型號說明.....P.24
毛氈齒輪.....P.25

Lubrication system model Description..... P.24
Felt gear..... P.25



註油器.....P.26
註油器的安裝及備件選擇.....P.28

Oil injector..... P.26
Installation of oil injector and selection of spare parts.. P.28

附錄

Appendix

齒數與齒條的強度計算公式..... P.31
硬度對照表.....P.32
齒數和模數轉換.....P.33
齒條標準倒角圖.....P.34

Strength and durability of the gears..... P.31
Hardness comparison table..... P.32
Number of teeth and analog to digital conversion..... P.33
Rack standard chamfer diagram..... P.34

齒條型號說明 Rack Code Instruction



1st	2nd	3rd	4th	5th	6th	7th
材料 Material	精度等級 Accuracy class	模數 Modulus	齒形 Tooth profile	硬度處理 Hardness	長度 Length	鑽孔 Drilling
2	6=DIN6	020	1	1	05	N
2=中碳鋼	6=DIN6齒面磨削、 四面磨削 7=DIN7四面研磨， 齒面不磨削 8=DIN8精銑 9=DIN9熱處理（四 面研磨）	015=1.5 020=2 030=3 040=4 050=5 060=6 080=8 100=10	1=直齒 2=斜齒	0=調質 1=硬化處理	05=500mm 10=1000mm	N=無鉗孔 T=特殊尺寸
2=S45C	6=DIN6 grinding 7=DIN7 four-sided grinding 8=DIN8 Fine milling 9=DIN9 Heat treatment (four-sided grinding)		1=Straight tooth 2=Helical tooth	0=Tempering 1=Hardening		N=No drilling T=Special size

備註：長度、鑽孔、材質、表面處理（磷酸鹽、染黑、研磨）等特殊需求，皆可客製。

Remarks: Lengths, holes, materials, surface treatments (phosphated, Black-coated, sides ground) and other requirements all could be customized.

齒條裝配說明

為了可以更順利的安裝連接齒條,標準齒條的兩端端面將會加工為半齒齒底;以方便跟下一支齒條的端面半齒齒底連接成一個全齒。下圖表示為兩支齒條如何連接,并由齒規可以擁有準確的齒距位置。關於斜齒齒條相接可以藉由反向齒規配合調整精度,以便可以精準的連接齒條。

1、而在齒條安裝相接時,我們建議先鎖上齒條側面的安裝孔,并依照基座上相對應的孔位依序鎖上;并藉由安裝齒規可以很準確的將齒條的齒距位置安裝完成。

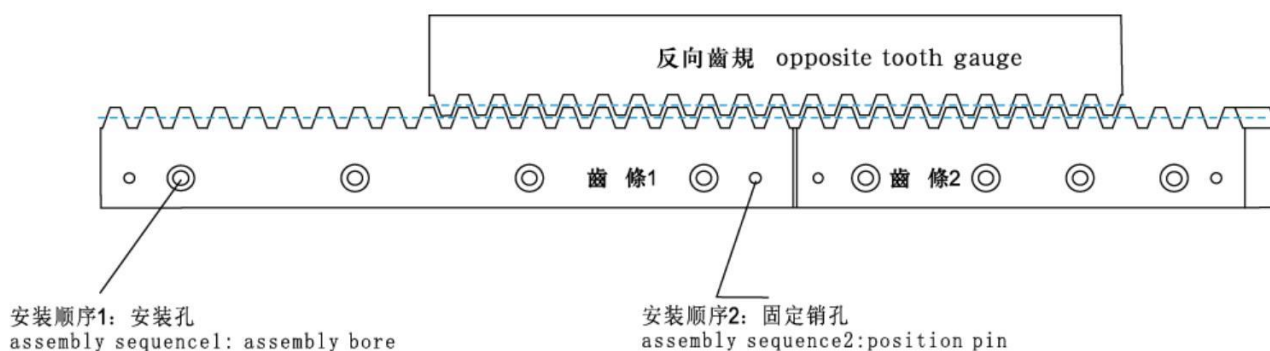
2、最后再齒條上的兩端側面的固定銷孔給固定上即完成安裝。

Instruction of Rack Assembly

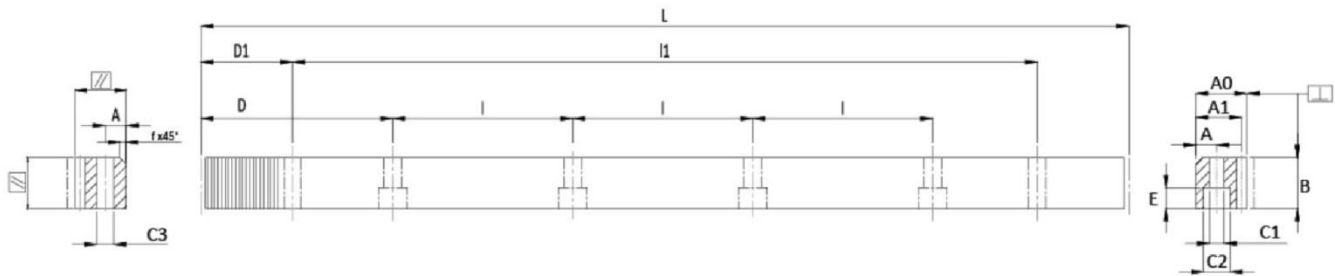
In order to install and connect the rack more smoothly, the end faces of the two ends of the standard rack will be processed into half-tooth bottoms; it is convenient to connect with the half-tooth bottoms of the next rack to form a full tooth. The figure below shows how the two racks are connected, and the gear gauge can have an accurate pitch position. Regarding the connection of the helical gear rack, the accuracy can be adjusted by the reverse gear gauge, so that the rack can be connected accurately.

1. When connecting racks, we recommend lock bores on the sides of rack first, and lock bores by the sequence of the foundation. With assembling the tooth gauge, pitch position of racks can be assembled accurately and completely.

2. Last, lock the position pin on 2 sides of rack; the assembly is completed.



(S45C) DIN 6



*可任意連續拼接，模數為1.5-10齒條
Can be arbitrarily continuous splicing, the module is 1.5-10 rack.

單位/Dimension :mm

型号 Order	模數 Module	L	齒數 Tooth No	B	A0	A1	D	l	孔數 Hole No.	A	C1	C2	E	D1	l1	C3	總齒距誤差 Pitch Error /300mm	F _u kN
260151105	1.5	499.51	106	17	17	15.5	62.44	124.88	4	7	6	9	7	29.00	441.50	5.7	0.021	3.38
260151110	1.5	999.03	212	17	17	15.5	62.44	124.88	8	7	6	9	7	29.00	941.00	5.7	0.021	3.38
260151105	1.5	499.51	106	19	19	17.5	62.44	124.88	4	8	7	11	7	29.00	441.50	5.7	0.021	3.38
260151110	1.5	999.03	212	19	19	17.5	62.44	124.88	8	8	7	11	7	29.00	941.00	5.7	0.021	3.38
260201105	2	502.65	80	24	24	22	62.83	125.66	4	8	7	11	7	31.30	440.10	5.7	0.022	5.69
260201110	2	1005.31	160	24	24	22	62.83	125.66	8	8	7	11	7	31.30	942.70	5.7	0.022	5.69
260301105	3	508.94	54	29	29	26	63.62	127.23	4	9	10	15	9	34.40	440.10	7.7	0.024	10.32
260301110	3	1017.88	108	29	29	26	63.62	127.23	8	9	10	15	9	34.40	949.10	7.7	0.024	10.32
260401105	4	502.65	40	39	39	35	62.83	125.66	4	12	10	15	9	37.50	427.70	7.7	0.025	18.50
260401110	4	1005.31	80	39	39	35	62.83	125.66	8	12	10	15	9	37.50	930.30	7.7	0.025	18.50
260501105	5	502.65	32	49	49	34	62.83	125.66	4	12	14	20	13	30.10	442.40	11.7	0.025	29.06
260501110	5	1005.31	64	49	49	34	62.83	125.66	8	12	14	20	13	30.10	945.00	11.7	0.025	29.06
260601105	6	508.94	27	59	59	43	63.62	127.23	4	16	18	26	17	31.40	446.10	15.7	0.026	41.99
260601110	6	1017.88	54	59	59	43	63.62	127.23	8	16	18	26	17	31.40	955.00	15.7	0.026	41.99
260801105	8	502.65	20	79	79	71	62.83	125.66	4	25	22	33	21	26.60	449.50	19.7	0.027	74.96
260801110	8	1005.31	40	79	79	71	62.83	125.66	8	25	22	33	21	26.60	952.00	19.7	0.027	74.96

直齒磨削系列DIN 6

制程說明：
 精度等級：(JIS2級)符合DIN6h25
 材料：(S45C中碳鋼)C45
 齒型：直齒
 齒面處理：磨削
 硬度處理：高周波，硬度為HRC43~45度
 四面磨削：有
 壓力角：20度

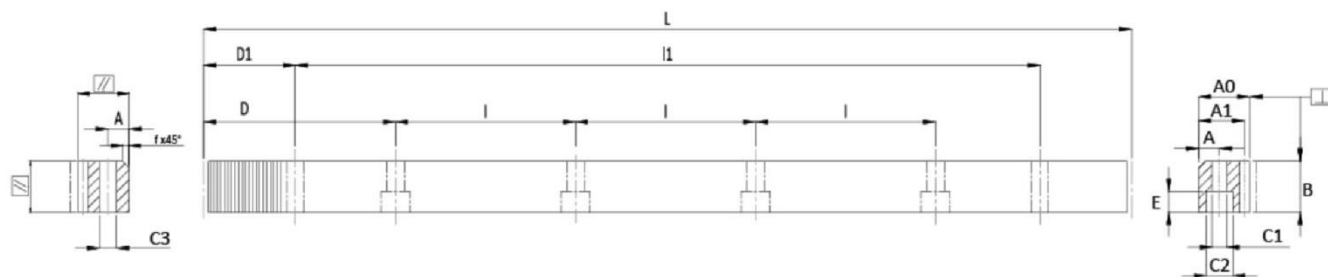
*亦供應無孔的齒條，請於型號後加註"N"的如260201110N。
 *不同尺寸與材質也可依照圖面客制化。
 *總齒距誤差：每300毫米齒距累積量誤差的極大值。

Straight tooth grinding series DIN 6

Manufacturing Description:
 Precision Grade: (JIS Grade 2)DIN 6h25
 Material: (S45C Medium Carbon Steel)C45
 Type: Straight Rack
 Treatment of Teeth: Ground
 Hardness: High Frequency; HRC43~45 degree
 Sides Ground: Included
 Pressure Angle: 20degree

*Racks without holes are also available. Note "N" in the end of code number. i.e.260201110N.
 *Other Dimensions/Materials could be customized by drawings.
 *Pitch Error: total pitch error per 300mm.

(S45C) DIN 7



*可任意連續拼接，模數為1.5-10齒條
Can be arbitrarily continuous splicing, the module is 1.5-10 rack.

單位/Dimension :mm

型号 Order	模數 Module	L	齒數 Tooth No	B	A0	A1	D	l	孔數 Hole No.	A	C1	C2	E	D1	l1	C3	總齒距誤差 Pitch Error /300mm
270151005	1.5	499.51	106	17	17	15.5	62.44	124.88	4	7	6	9	7	29.0	441.50	5.7	
270151010	1.5	999.03	212	17	17	15.5	62.44	124.88	8	7	6	9	7	29.0	941.00	5.7	
270151005	1.5	499.51	106	19	19	17.5	62.44	124.88	4	8	7	11	7	29.0	441.50	5.7	
270151010	1.5	999.03	212	19	19	17.5	62.44	124.88	8	8	7	11	7	29.0	941.00	5.7	
270201005	2	502.65	80	25	24	22	62.83	125.66	4	8	7	11	7	31.3	440.10	5.7	
270201010	2	1005.31	160	25	24	22	62.83	125.66	8	8	7	11	7	31.3	942.70	5.7	
270301005	3	508.94	54	30	29	26	63.62	127.23	4	9	10	15	9	34.4	440.10	7.7	
270301010	3	1017.88	108	30	29	26	63.62	127.23	8	9	10	15	9	34.4	949.10	7.7	
270401005	4	502.65	40	40	39	35	62.83	125.66	4	12	10	15	9	37.5	427.70	7.7	
270401010	4	1005.31	80	40	39	35	62.83	125.66	8	12	10	15	9	37.5	930.30	7.7	
270501005	5	502.65	32	49	39	34	62.83	125.66	4	12	14	20	13	30.1	442.40	11.7	
270501010	5	1005.31	64	49	39	34	62.83	125.66	8	12	14	20	13	30.1	945.00	11.7	
270601005	6	508.94	27	59	49	43	63.62	127.23	4	16	18	26	17	31.4	446.10	15.7	
270601010	6	1017.88	54	59	49	43	63.62	127.23	8	16	18	26	17	31.4	955.00	15.7	
270801005	8	502.65	20	79	79	71	62.83	125.66	4	25	22	33	21	26.6	449.50	19.7	
270801010	8	1005.31	40	79	79	71	62.83	125.66	8	25	22	33	21	26.6	952.00	19.7	
271001010	10	1005.31	32	99	99	89	62.83	125.66	8	32	33	48	32	125.7	753.96	19.7	

直齒精銑系列DIN 7

制程說明：
 精度等級：(JIS3級)符合DIN7e25
 材料：(S45C中碳鋼)C45
 齒型：直齒
 齒面處理：精銑
 硬度處理：調質處理硬度為HRC18~22度
 四面磨削：有
 壓力角：20度

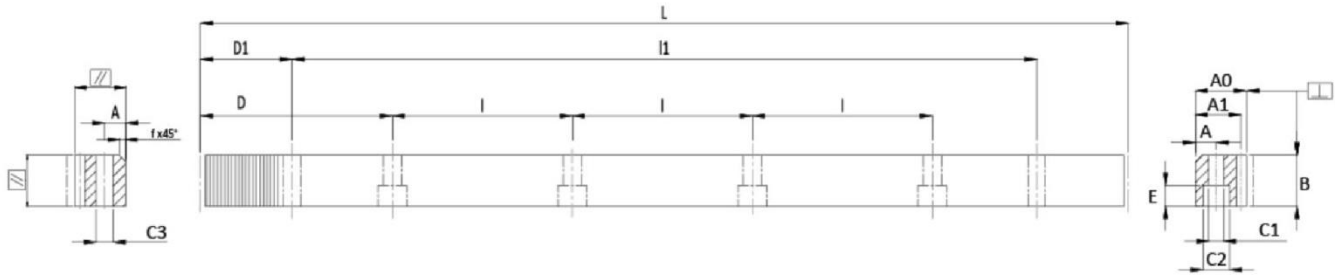
*亦供應無孔的齒條，請於型號後加註"N"的如270201010N。
 *不同尺寸與材質也可依照圖面客制化。
 *總齒距誤差：每300毫米齒距累積誤差的最大值

Straight tooth precision milling series DIN 7

Manufacturing Description:
 Precision Grade: (JIS Grade 3)DIN 7e25
 Material: (S45C Medium Carbon Steel)C45
 Type: Straight Rack
 Treatment of Teeth: Milled
 Hardness: quenched; 18~22 degree
 Sides Ground: Included
 Pressure Angle: 20degree

*Racks without holes are also available. Note "N" in the end of code number.i.e270201010N.
 *Other Dimenaions/Materials could be customized by drawings.
 *Pitch Error: total pitch error per 300mm.

(S45C) DIN 8



*可任意連續拼接，模數為1.5-10齒條
Can be arbitrarily continuous splicing, the module is 1.5-10 rack.

單位/Dimension :mm

型号 Order	模數 Module	L	齒數 Tooth No	B	A0	A1	D	l	孔數 Hole No.	A	C1	C2	E	D1	l1	C3	總齒距誤差 Pitch Error /300mm	F _{ts} kN
280151005	1.5	499.51	106	17	17	15.5	62.44	124.88	4	7	6	9	7	29.0	441.50	5.7	0.042	0.48
280151010	1.5	999.03	212	17	17	15.5	62.44	124.88	8	7	6	9	7	29.0	941.00	5.7	0.042	0.48
280151005	1.5	499.51	106	19	19	17.5	62.44	124.88	4	8	7	11	7	29.0	441.50	5.7	0.042	0.48
280151010	1.5	999.03	212	19	19	17.5	62.44	124.88	8	8	7	11	7	29.0	941.00	5.7	0.042	0.48
280201005	2	502.65	80	25	24	22	62.83	125.66	4	8	7	11	7	31.3	440.10	5.7	0.044	0.94
280201010	2	1005.31	160	25	24	22	62.83	125.66	8	8	7	11	7	31.3	942.70	5.7	0.044	0.94
280301005	3	508.94	54	30	29	26	63.62	127.23	4	9	10	15	9	34.4	440.10	7.7	0.046	1.70
280301010	3	1017.88	108	30	29	26	63.62	127.23	8	9	10	15	9	34.4	949.10	7.7	0.046	1.70
280401005	4	502.65	40	40	39	35	62.83	125.66	4	12	10	15	9	37.5	427.70	7.7	0.048	3.01
280401010	4	1005.31	80	40	39	35	62.83	125.66	8	12	10	15	9	37.5	930.30	7.7	0.048	3.01
280501005	5	502.65	32	49	39	34	62.83	125.66	4	12	14	20	13	30.1	442.40	11.7	0.050	4.61
280501010	5	1005.31	64	49	39	34	62.83	125.66	8	12	14	20	13	30.1	945.00	11.7	0.050	4.61
280601005	6	508.94	27	59	49	43	63.62	127.23	4	16	18	26	17	31.4	446.10	15.7	0.055	6.67
280601010	6	1017.88	54	59	49	43	63.62	127.23	8	16	18	26	17	31.4	955.00	15.7	0.055	6.67
280801005	8	502.65	20	79	79	71	62.83	125.66	4	25	22	33	21	26.6	449.50	19.7	0.060	11.90
280801010	8	1005.31	40	79	79	71	62.83	125.66	8	25	22	33	21	26.6	952.00	19.7	0.060	11.90
281001010	10	1005.31	32	99	99	89	62.83	125.66	8	32	33	48	32	125.7	753.96	19.7	0.065	18.65

直齒精銑系列DIN 8

制程說明：
 精度等級：(JIS4級)符合DIN8e27
 材料：(S45C中碳鋼)C45
 齒型：直齒
 齒面處理：精銑
 硬度處理：硬度為HRC18~22度
 四面磨削：無
 壓力角：20度

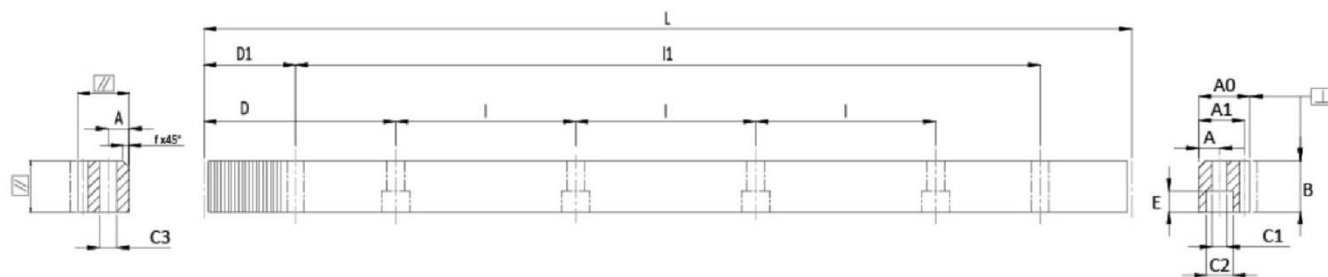
- *亦供應無黏孔的齒條，請於型號後加註"N"的如280201010N。
- *不同尺寸與材質也可依照圖面客制化。
- *總齒距誤差：每300毫米齒距累積量誤差的極大值。

Straight tooth precision milling series DIN 8

Manufacturing Description:
 Precision Grade: (JIS Grade 4)DIN 8e27
 Material: (S45C Medium Carbon Steel)C45
 Type: Straight Rack
 Treatment of Teeth: Milled
 Hardness: HRC18~22 degree
 Sides Ground: not Included
 Pressure Angle: 20degree

- *Racks without holes are also available. Note "N" in the end of code number.i.e280201010N.
- *Other Dimenaions/Materials could be customized by drawings.
- *Pitch Error: total pitch error per 300mm.

(S45C) DIN 9



*可任意連續拼接，模數為1.5-10齒條
Can be arbitrarily continuous splicing, the module is 1.5-10 rack.

單位/Dimension :mm

型号 Order	模數 Module	L	齒數 Tooth No	B	A0	A1	D	l	孔數 Hole No.	A	C1	C2	E	D1	l1	C3	總齒距誤差 Pitch Error /300mm	F ₀ kN
290151105	1.5	499.51	106	17	17	15.5	62.44	124.88	4	7	6	9	7	29.0	441.50	5.7	0.058	1.98
290151110	1.5	999.03	212	17	17	15.5	62.44	124.88	8	7	6	9	7	29.0	941.00	5.7	0.058	1.98
290151105	1.5	499.51	106	19	19	17.5	62.44	124.88	4	8	7	11	7	29.0	441.50	5.7	0.058	1.98
290151110	1.5	999.03	212	19	19	17.5	62.44	124.88	8	8	7	11	7	29.0	941.00	5.7	0.058	1.98
290201105	2	502.65	80	25	24	22	62.83	125.66	4	8	7	11	7	31.3	440.10	5.7	0.059	3.73
290201110	2	999.03	160	25	24	22	62.83	125.66	8	8	7	11	7	31.3	942.70	5.7	0.059	3.73
290301105	3	508.94	54	30	29	26	63.62	127.23	4	9	10	15	9	34.4	440.10	7.7	0.065	6.76
290301110	3	1017.88	108	30	29	26	63.62	127.23	8	9	10	15	9	34.4	949.10	7.7	0.065	6.76
290401105	4	502.65	40	40	39	35	62.83	125.66	4	12	10	15	9	37.5	427.70	7.7	0.068	12.12
290401110	4	1005.31	80	40	39	35	62.83	125.66	8	12	10	15	9	37.5	930.30	7.7	0.068	12.12
290501105	5	502.65	32	50	39	34	62.83	125.66	4	12	14	20	13	30.1	442.40	11.7	0.070	19.04
290501110	5	1005.31	64	50	39	34	62.83	125.66	8	12	14	20	13	30.1	945.00	11.7	0.070	19.04
290601105	6	508.94	27	60	49	43	63.62	127.23	4	16	18	26	17	31.4	446.10	15.7	0.072	27.51
290601110	6	1017.88	54	60	49	43	63.62	127.23	8	16	18	26	17	31.4	955.00	15.7	0.072	27.51
290801105	8	502.65	20	79	79	71	62.83	125.66	4	25	22	33	21	26.6	449.50	19.7	0.075	49.11
290801110	8	1005.31	40	79	79	71	62.83	125.66	8	25	22	33	21	26.6	952.00	19.7	0.075	49.11
291001110	10	1005.31	32	99	99	89	62.83	125.66	8	32	33	48	32	125.7	753.96	19.7	0.080	76.93

直齒熱處理系列DIN 9

制程說明：
 精度等級：(JIS5級)符合DIN9e27
 材料：(S45C中碳鋼)C45
 齒型：直齒
 齒面處理：精銑
 硬度處理：硬度為HRC43~45度
 四面磨削：有
 壓力角：20度

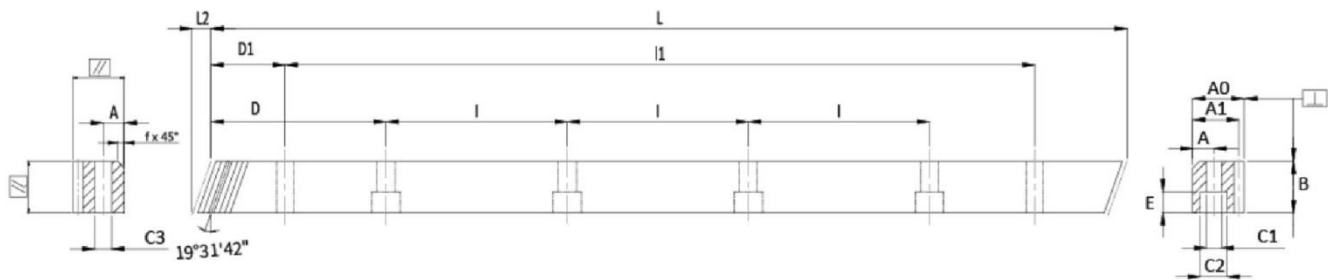
- *亦供應無孔的齒條，請於型號後加註 "N" 的如290201110N。
- *不同尺寸與材質也可依照圖面客制化。
- *總齒距誤差：每300毫米齒距累積誤差的最大值。

Straight tooth heat treatment series DIN 9

Manufacturing Description:
 Precision Grade: (JIS Grade 5)DIN 9e27
 Material: (S45C Medium Carbon Steel)C45
 Type: Straught Rack
 Treatment of Teeth: Milled
 Hardness: High Frequency; HRC43~45 degree
 Sides Ground: Included
 Pressure Angle: 20degree

- *Racks without holes are also available. Note "N" in the end of code numner.i.e290201110N.
- *Other Dimenaions/Materials could be customized by drawings.
- *Pitch Error: total pitch error per 300mm.

(S45C) DIN 6



*可任意連續拼接，模數為1.5-10齒條
Can be arbitrarily continuous splicing, the module is 1.5-10 rack.

單位/Dimension :mm

型号 Order	模數 Module	L	L2	齒數 Tooth No	B	A0	A1	D	I	孔數 Hole No.	A	C1	C2	E	D1	I1	C3	總齒距誤差 Pitch Error /300mm	F ₀ kN
260152105	1.5	500.00	6.70	100	17	17	15.5	62.50	125	4	7	6	9	7	31.7	436.60	5.7	0.021	4.84
260152110	1.5	1000.00	6.70	200	17	17	15.5	62.50	125	8	7	6	9	7	31.7	936.60	5.7	0.021	4.84
260152105	1.5	500.00	6.70	100	19	19	17.5	62.50	125	4	8	7	11	7	31.7	436.60	5.7	0.021	4.84
260152110	1.5	1000.00	6.70	200	19	19	17.5	62.50	125	8	8	7	11	7	31.7	936.60	5.7	0.021	4.84
260202105	2	500.00	8.50	75	24	24	22	62.50	125	4	8	7	11	7	31.7	436.60	5.7	0.022	8.15
260202110	2	1000.00	8.50	150	24	24	22	62.50	125	8	8	7	11	7	31.7	936.60	5.7	0.022	8.15
260302105	3	500.00	10.30	50	29	29	26	62.50	125	4	9	10	15	9	35.0	430.00	7.7	0.024	14.77
260302110	3	1000.00	10.30	100	29	29	26	62.50	125	8	9	10	15	9	35.0	930.00	7.7	0.024	14.77
260402105	4	506.67	13.80	38	39	39	35	62.50	125	4	12	10	15	9	33.3	433.00	7.7	0.024	26.49
260402110	4	1000.00	13.80	75	39	39	35	62.50	125	8	12	10	15	9	33.3	933.40	7.7	0.024	26.49
260502105	5	500.00	17.40	30	49	49	34	62.50	125	4	12	14	20	13	37.5	425.00	11.7	0.025	41.60
260502110	5	1000.00	17.40	60	49	49	34	62.50	125	8	12	14	20	13	37.5	925.00	11.7	0.025	41.60
260602105	6	500.00	20.90	25	59	59	43	62.50	125	4	16	18	26	17	37.5	425.00	15.7	0.026	60.11
260602110	6	1000.00	20.90	50	59	59	43	62.50	125	8	16	18	26	17	37.5	925.00	15.7	0.026	60.11
260802105	8	480.00	28.00	18	79	79	71	60.00	120	4	25	22	33	21	120.0	240.00	19.7	0.027	107.31
260802110	8	960.00	28.00	36	79	79	71	60.00	120	8	25	22	33	21	120.0	720.00	19.7	0.027	107.31
261002110	10	1000.00	35.11	30	99	99	89	62.50	125	8	32	33	48	32	125.0	750.00	19.7	0.030	168.10

斜齒磨削系列DIN 6

制程說明：
 精度等級：(JIS2級)符合DIN6h25
 材料：(S45C中碳鋼)C45
 齒型：斜齒
 齒面處理：磨削
 硬度處理：高周波，硬度為HRC43~45度
 四面磨削：有
 右旋角：19°31'42"
 壓力角：20度

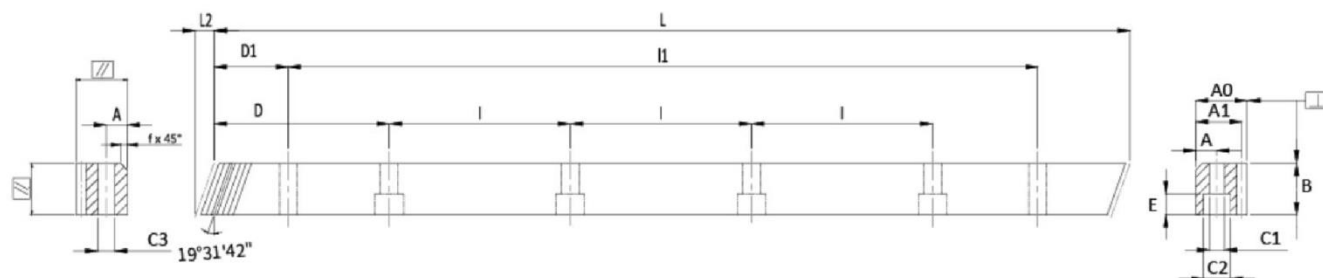
*亦供應無黏孔的齒條，請於型號後加註"N"的如260202110N。
 *不同尺寸與材質也可依照圖面客制化。
 *總齒距誤差：每300毫米齒距累積量誤差的最大值。

Helical gear grinding series DIN 6

Manufacturing Description:
 Precision Grade: (JIS Grade 2)DIN 6h25
 Material: (S45C Medium Carbon Steel)C45
 Type: Helical Rack
 Treatment of Teeth: Ground
 Hardness: High Frequency; HRC43~45 degree
 Sides Ground: Included
 Right Hand Angle: 19°31'42"
 Pressure Angle: 20degree

*Racks without holes are also available. Note "N" in the end of code number.i.e260201010N.
 *Other Dimenaions/Materials could be customized by drawings.
 *Pitch Error: total pitch error per 300mm.

(S45C) DIN 7



*可任意連續拼接，模數為1.5-10齒條
 Can be arbitrarily continuous splicing, the module is 1.5-10 rack.

單位/Dimension : mm

型号 Order	模數 Module	L	L2	齒數 Tooth No	B	A0	A1	D	I	孔數 Hole No.	A	C1	C2	E	D1	I1	C3	總齒距誤差 Pitch Error /300mm
270152005	1.5	500.00	6.70	100	17	17	15.5	62.5	125	4	7	6	9	7	31.7	436.60	5.7	
270152010	1.5	1000.00	6.70	200	17	17	15.5	62.5	125	8	7	6	9	7	31.7	936.60	5.7	
270152005	1.5	500.00	6.70	100	19	19	17.5	62.5	125	4	8	7	11	7	31.7	436.60	5.7	
270152010	1.5	1000.00	6.70	200	19	19	17.5	62.5	125	8	8	7	11	7	31.7	936.60	5.7	
270202005	2	500.00	8.90	75	25	24	22	62.5	125	4	8	7	11	7	31.7	436.60	5.7	
270202010	2	1000.00	8.90	150	25	24	22	62.5	125	8	8	7	11	7	31.7	936.60	5.7	
270302005	3	500.00	10.60	50	30	29	26	62.5	125	4	9	10	15	9	35.0	430.00	7.7	
270302010	3	1000.00	10.60	100	30	29	26	62.5	125	8	9	10	15	9	35.0	930.00	7.7	
270402005	4	506.67	14.20	38	40	39	35	62.5	125	4	12	10	15	9	33.3	433.00	7.7	
270402010	4	1000.00	14.20	75	40	39	35	62.5	125	8	12	10	15	9	33.3	933.40	7.7	
270502005	5	500.00	17.40	30	50	39	34	62.5	125	4	12	14	20	13	37.5	425.00	11.7	
270502010	5	1000.00	17.40	60	50	39	34	62.5	125	8	12	14	20	13	37.5	925.00	11.7	
270602005	6	500.00	20.90	25	59	49	43	62.5	125	4	16	18	26	17	37.5	425.00	15.7	
270602010	6	1000.00	20.90	50	59	49	43	62.5	125	8	16	18	26	17	37.5	925.00	15.7	
270802005	8	480.00	28.00	18	79	79	71	60.0	120	4	25	22	33	21	120.0	240.00	19.7	
270802010	8	960.00	28.00	36	79	79	71	60.0	120	8	25	22	33	21	120.0	720.00	19.7	
271002010	10	1000.00	35.11	30	99	99	89	62.5	125	8	32	33	48	32	125.0	750.00	19.7	

斜齒精銑系列DIN 7

制程說明：
 精度等級：(JIS3級)符合DIN7e25
 材料：(S45C中碳鋼) C45
 齒型：斜齒
 齒面處理：精銑
 硬度處理：硬度為HRC18~22度
 四面磨削：有
 右旋角：19°31'42"
 壓力角：20度

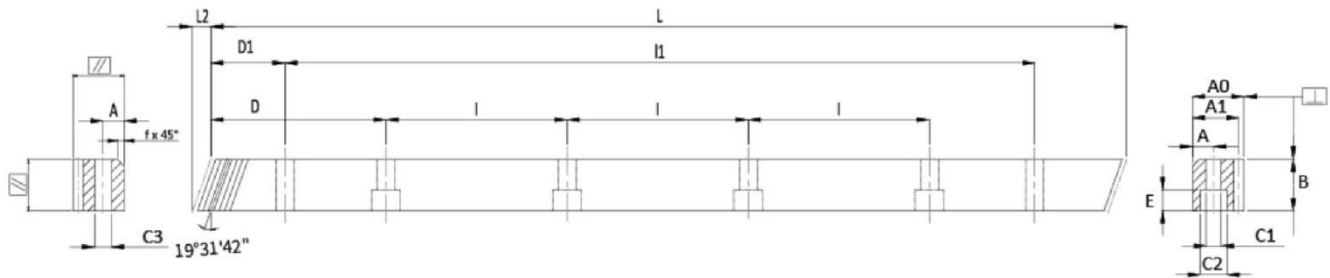
*亦供應無鉅孔的齒條，請於型號後加註 "N" 的如270201010N。
 *不同尺寸與材質也可依照圖面客制化。
 *總齒距誤差：每300毫米齒距累積量誤差的最大值。

Helical gear precision milling series DIN 7

Manufacturing Description:
 Precision Grade: (JIS Grade 3)DIN 7e25
 Material: (S45C Medium Carbon Steel)C45
 Type: Helical Rack
 Treatment of Teeth: Ground
 Hardness: HRC18~22 degree
 Sides Ground: Included
 Right Hand Angle: 19°31'42"
 Pressure Angle: 20degree

*Racks without holes are also available. Note "N" in the end of code number.i.e270202110N.
 *Other Dimenaions/Materials could be customized by drawings.
 *Pitch Error: total pitch error per 300mm.

(S45C) DIN 8



*可任意連續拼接，模數為1.5-10齒條
Can be arbitrarily continuous splicing, the module is 1.5-10 rack.

單位/Dimension : mm

型号 Order	模數 Module	L	L2	齒數 Tooth No	B	A0	A1	D	I	孔數 Hole No.	A	C1	C2	E	D1	I1	C3	總齒距誤差 Pitch Error /300mm	F _{ts} kN
280152005	1.5	500.00	6.70	100	17	17	15.5	62.5	125	4	7	6	9	7	31.7	436.60	5.7	0.042	0.88
280152010	1.5	1000.00	6.70	200	17	17	15.5	62.5	125	8	7	6	9	7	31.7	936.60	5.7	0.042	0.88
280152005	1.5	500.00	6.70	100	19	19	17.5	62.5	125	4	8	7	11	7	31.7	436.60	5.7	0.042	0.88
280152010	1.5	1000.00	6.70	200	19	19	17.5	62.5	125	8	8	7	11	7	31.7	936.60	5.7	0.042	0.88
280202005	2	500.00	8.90	75	25	24	22	62.5	125	4	8	7	11	7	31.7	436.60	5.7	0.044	1.73
280202010	2	1000.00	8.90	150	25	24	22	62.5	125	8	8	7	11	7	31.7	936.60	5.7	0.044	1.73
280302005	3	500.00	10.60	50	30	29	26	62.5	125	4	9	10	15	9	35.0	430.00	7.7	0.046	3.11
280302010	3	1000.00	10.60	100	30	29	26	62.5	125	8	9	10	15	9	35.0	930.00	7.7	0.046	3.11
280402005	4	506.67	14.20	38	40	39	35	62.5	125	4	12	10	15	9	33.3	433.00	7.7	0.048	5.52
280402010	4	1000.00	14.20	75	40	39	35	62.5	125	8	12	10	15	9	33.3	933.40	7.7	0.048	5.52
280502005	5	500.00	17.40	30	50	39	34	62.5	125	4	12	14	20	13	37.5	425.00	11.7	0.050	8.46
280502010	5	1000.00	17.40	60	50	39	34	62.5	125	8	12	14	20	13	37.5	925.00	11.7	0.050	8.46
280602005	6	500.00	20.90	25	59	49	43	62.5	125	4	16	18	26	17	37.5	425.00	15.7	0.055	12.22
280602010	6	1000.00	20.90	50	59	49	43	62.5	125	8	16	18	26	17	37.5	925.00	15.7	0.055	12.22
280802005	8	480.00	28.00	18	79	79	71	60.0	120	4	25	22	33	21	120.0	240.00	19.7	0.060	21.81
280802010	8	960.00	28.00	36	79	79	71	60.0	120	8	25	22	33	21	120.0	720.00	19.7	0.060	21.81
281002010	10	1000.00	35.11	30	99	99	89	62.5	125	8	32	33	48	32	125.0	750.00	19.7	0.065	34.17

斜齒精銑系列DIN 8

制程說明：
 精度等級：(JIS4級)符合DIN8e25
 材料：(S45C中碳鋼) C45
 齒型：斜齒
 齒面處理：精銑
 硬度處理：硬度為HRC18~22度
 四面磨削：無
 右旋角：19°31'42"
 壓力角：20度

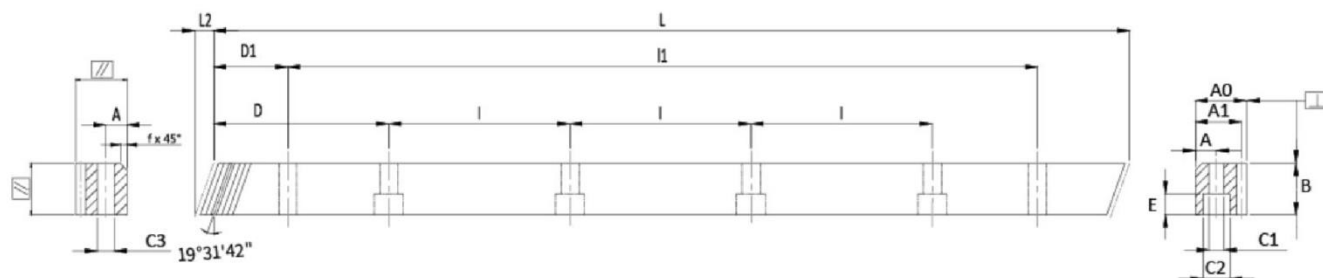
*亦供應無黏孔的齒條，請於型號後加註 "N" 的如280202010N。
 *不同尺寸與材質也可依照圖面客制化。
 *總齒距誤差：每300毫米齒距累積量誤差的極大值。

Helical gear precision milling series DIN 8

Manufacturing Description:
 Precision Grade: (JIS Grade 4)DIN 8e25
 Material: (S45C Medium Carbon Steel)C45
 Type: Helical Rack
 Treatment of Teeth: Ground
 Hardness: HRC18~22 degree
 Sides Ground: Not Included
 Right Hand Angle: 19°31'42"
 Pressure Angle: 20degree

*Racks without holes are also available. Note "N" in the end of code number.i.e280202010N.
 *Other Dimenaions/Materials could be customized by drawings.
 *Pitch Error: total pitch error per 300mm.

(S45C) DIN 9



*可任意連續拼接，模數為1.5-10齒條
Can be arbitrarily continuous splicing, the module is 1.5-10 rack.

單位/Dimension :mm

型号 Order	模數 Module	L	L2	齒數 Tooth No	B	A0	A1	D	I	孔數 Hole No.	A	C1	C2	E	D1	I1	C3	總齒距誤差 Pitch Error /300mm	F _{ts} kN
290152105	1.5	500.00	6.70	100	17	17	15.5	62.5	125	4	7	6	9	7	31.7	436.60	5.7	0.059	3.18
290152110	1.5	1000.00	6.70	200	17	17	15.5	62.5	125	8	7	6	9	7	31.7	936.60	5.7	0.059	3.18
290152105	1.5	500.00	6.70	100	19	19	17.5	62.5	125	4	8	7	11	7	31.7	436.60	5.7	0.059	3.18
290152110	1.5	1000.00	6.70	200	19	19	17.5	62.5	125	8	8	7	11	7	31.7	936.60	5.7	0.059	3.18
290202105	2	500.00	9.20	75	25	24	22	62.5	125	4	8	7	11	7	31.7	436.60	5.7	0.061	5.98
290202110	2	1000.00	9.20	150	25	24	22	62.5	125	8	8	7	11	7	31.7	936.60	5.7	0.061	5.98
290302105	3	500.00	11.00	50	30	29	26	62.5	125	4	9	10	15	9	35.0	430.00	7.7	0.065	10.83
290302110	3	1000.00	11.00	100	30	29	26	62.5	125	8	9	10	15	9	35.0	930.00	7.7	0.065	10.83
290402105	4	506.67	14.50	38	40	39	35	62.5	125	4	12	10	15	9	33.3	433.00	7.7	0.068	19.42
290402110	4	1000.00	14.50	75	40	39	35	62.5	125	8	12	10	15	9	33.3	933.40	7.7	0.068	19.42
290502105	5	500.00	17.70	30	50	39	34	62.5	125	4	12	14	20	13	37.5	425.00	11.7	0.070	30.51
290502110	5	1000.00	17.70	60	50	39	34	62.5	125	8	12	14	20	13	37.5	925.00	11.7	0.070	30.51
290602105	6	500.00	21.30	25	60	49	43	62.5	125	4	16	18	26	17	37.5	425.00	15.7	0.072	44.08
290602110	6	1000.00	21.30	50	60	49	43	62.5	125	8	16	18	26	17	37.5	925.00	15.7	0.072	44.08
290802105	8	480.00	28.70	18	80	79	71	60.0	120	4	25	22	33	21	120.0	240.00	19.7	0.075	78.69
290802110	8	960.00	28.70	36	80	79	71	60.0	120	8	25	22	33	21	120.0	720.00	19.7	0.075	78.69
291002110	10	1000.00	35.11	30	100	99	89	62.5	125	8	32	33	48	32	125.0	750.00	19.7	0.080	123.27

斜齒熱處理系列DIN 9

制程說明：

精度等級：(JIS5級)符合DIN9e27

材料：(S45C中碳鋼)C45

齒型：斜齒

齒面處理：精銑

硬度處理：硬度為HRC43~45度

四面磨削：有

右旋角：19°31'42"

壓力角：20

*亦供應無黏孔的齒條，請於型號後加註"N"的如290202110N。

*不同尺寸與材質也可依照圖面客制化。

*總齒距誤差：每300毫米齒距累積量誤差的極大值。

Helical gear heat treatment series DIN 9

Manufacturing Description:

Precision Grade: (JIS Grade 5)DIN 9e27

Material: (S45C Medium Carbon Steel)C45

Type: Helical Rack

Treatment of Teeth: Milled

Hardness: HRC43~45 degree

Sides Ground: Included

Right Hand Angle: 19°31'42"

Pressure Angle: 20degree

*Racks without holes are also available. Note "N" in the end of code number.i.e290202110N.

*Other Dimenaions/Materials could be customized by drawings.

*Pitch Error: total pitch error per 300mm.

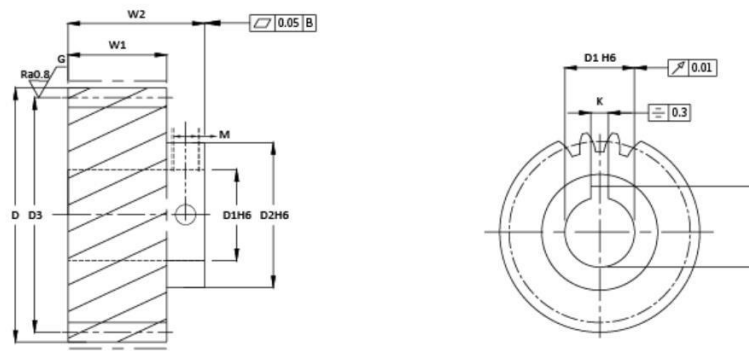
齒輪型號說明 Pinion Code Instruction



1st	2nd	3rd	4th	5th	6th	7th
材料 Material	精度等級 Accuracy class	模數 Modulus	齒形 Tooth profile	硬度處理 Hardness	齒數 Number of teeth	T
3	6	020	1	1	20	N
3=合金鋼	6=DIN6磨削 9=DIN9熱處理	015=1.5 020=2 030=3 040=4 050=5 060=6 080=8 100=10	1=直齒 2=斜齒	0=調質 1=硬化處理	15 20 25 30 35 40 45	T=特殊尺寸
3=Alloy steel	6=DIN6 grinding 9=DIN9 heat treatment		1=Straight tooth 2=Helical tooth	0=Tempering 1=Hardening		T=Special size

可定制CP3、CP5、CP8、CP10、CP12、CP16、DP4、DP5、DP8、DP10、DP12、DP16、DP20

(S45C) DIN 6



單位/Dimension :mm

型号Order	精度DIN	齒數Tooth No	D1H6	D2	D3	D	W1	W2	M	K	H	F _{ta} kN
模數2 / Module 2												
360201120	DIN6	20	19	36	40	44	25	40	6*2	6	21.8	4.49
360201120	DIN6	20	22	36	40	44	25	40	6*2	6	24.8	4.49
360201122	DIN6	22	19	36	44	48	25	40	6*2	6	21.8	4.94
360201122	DIN6	22	22	36	44	48	25	40	6*2	6	24.8	4.94
360201125	DIN6	25	19	36	50	54	25	56	6*2	6	21.8	6.29
360201125	DIN6	25	22	36	50	54	25	56	6*2	6	24.8	6.29
360201125	DIN6	25	24	40	50	54	25	56	8*2	8	26.8	6.29
360201125	DIN6	25	32	45	50	54	25	56	8*2	8	35.3	6.29
360201130	DIN6	30	19	48	60	64	25	60	8*2	6	21.8	7.32
360201130	DIN6	30	22	50	60	64	25	60	8*2	6	24.8	7.32
360201130	DIN6	30	24	50	60	64	25	60	8*2	8	26.8	7.32
360201130	DIN6	30	32	50	60	64	25	60	8*2	10	35.3	7.32
360201132	DIN6	32	19	36	64	68	25	45	8*2	6	21.8	8.05
360201132	DIN6	32	22	36	64	68	25	45	8*2	8	24.8	8.05
360201132	DIN6	32	24	45	64	68	25	45	8*2	8	26.8	8.05
360201132	DIN6	32	32	50	64	68	25	45	10*2	10	35.3	8.05
360201136	DIN6	36	19	48	72	76	25	45	10*2	8	21.3	10.31
360201136	DIN6	36	22	48	72	76	25	45	10*2	8	24.3	10.31
360201136	DIN6	36	24	48	72	76	25	50	10*2	8	26.3	10.31
360201136	DIN6	36	32	58	72	76	25	50	10*2	10	35.3	10.31
360201136	DIN6	36	35	60	72	76	25	55	10*2	12	38.3	10.31
360201136	DIN6	36	40	65	72	76	25	55	10*2	14	43.3	10.31
360201140	DIN6	40	24	65	80	84	25	65	10*2	8	24.8	11.45
360201140	DIN6	40	32	65	80	84	25	65	10*2	10	35.3	11.45
360201140	DIN6	40	35	65	80	84	25	65	10*2	10	38.3	11.45
360201140	DIN6	40	40	65	80	84	25	65	10*2	12	43.3	11.45
360201145	DIN6	45	32	60	90	94	25	65	10*2	10	35.3	11.73
360201145	DIN6	45	35	60	90	94	25	65	10*2	10	38.3	11.73
360201145	DIN6	45	45	68	90	94	25	70	10*2	14	48.8	11.73
模數3 / Module 3												
360301118	DIN6	18	22	40	54	60	30	50	10*2	8	24.8	6.79
360301118	DIN6	18	24	42	54	60	30	50	10*2	8	26.8	6.79

直齒磨削齒輪

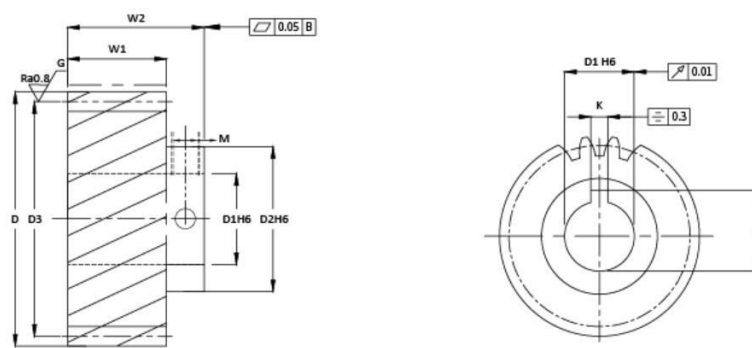
制程說明：
 精度等級：DIN6h25(JIS2級)
 材料：合金鋼
 齒型：直齒
 齒面處理：磨削
 硬度處理：HRC42~45度
 壓力角：20度

Straight tooth grinding gear

Manufacturing Description:
 Precision Grade: DIN 6h25 (JIS Grade 2)
 Material: Alloy steel
 Type: Helical Rack
 Treatment of Teeth: Ground
 Hardness: HRC42~45 degree
 Pressure Angle: 20degree

※ 此樣本中的所有產品型號及參數如有變更恕不另行通告，訂貨前請與本公司聯絡確認，可按要求定制

(S45C) DIN 6



單位/Dimension :mm

型号 Order	精度 DIN	齿数 Tooth No	D1H6	D2	D3	D	W1	W2	M	K	H	F _{ta} kN
模數 3 / Module 3												
360301120	DIN6	20	24	45	60	66	30	50	10*2	10	26.8	7.55
360301125	DIN6	25	22	45	75	81	30	75	10*2	8	24.8	10.77
360301125	DIN6	25	24	50	75	81	30	75	10*2	8	26.8	10.77
360301125	DIN6	25	32	55	75	81	30	75	10*2	10	35.3	10.77
360301125	DIN6	25	35	60	75	81	30	75	10*2	10	38.3	10.77
360301125	DIN6	25	45	70	75	81	30	75	10*2	12	48.8	10.77
360301130	DIN6	30	24	70	90	96	30	75	10*2	8	26.8	11.37
360301130	DIN6	30	32	70	90	96	30	75	10*2	10	35.3	11.37
360301130	DIN6	30	35	70	90	96	30	75	10*2	12	38.3	11.37
360301132	DIN6	32	24	70	96	102	30	75	10*2	8	26.8	13.74
360301132	DIN6	32	32	70	96	102	30	75	10*2	10	35.3	13.74
360301132	DIN6	32	35	70	96	102	30	75	10*2	10	38.3	13.74
360301132	DIN6	32	40	75	96	102	30	75	10*2	12	43.3	13.74
360301132	DIN6	32	45	80	96	102	30	75	10*2	12	48.8	13.74
360301136	DIN6	36	24	65	108	114	30	75	10*2	8	24.8	15.46
360301136	DIN6	36	32	75	108	114	30	75	10*2	10	35.3	15.46
360301136	DIN6	36	35	75	108	114	30	75	10*2	12	38.3	15.46
360301136	DIN6	36	45	80	108	114	30	75	10*2	12	48.8	15.46
360301140	DIN6	40	32	65	120	126	30	75	10*2	10	35.3	17.18
360301140	DIN6	40	35	75	120	126	30	75	10*2	10	38.3	17.18
360301140	DIN6	40	45	75	120	126	30	75	10*2	12	48.8	17.18
360301140	DIN6	40	60	98	120	126	30	75	10*2	14	63.8	17.18
360301145	DIN6	45	32	65	135	141	30	75	10*2	10	35.3	17.60
360301145	DIN6	45	35	65	135	141	30	75	10*2	12	38.3	17.60
360301145	DIN6	45	45	98	135	141	30	75	10*2	14	48.8	17.60
模數 4 / Module 4												
360401120	DIN6	20	32	60	80	88	40	75	10*2	10	35.3	14.37
360401120	DIN6	20	35	70	80	88	40	75	10*2	10	38.3	14.37
360401120	DIN6	20	40	70	80	88	40	80	10*2	12	43.3	14.37
360401120	DIN6	20	45	75	80	88	40	75	10*2	14	48.8	14.37
360401122	DIN6	22	35	70	88	96	40	80	10*2	12	38.3	15.81

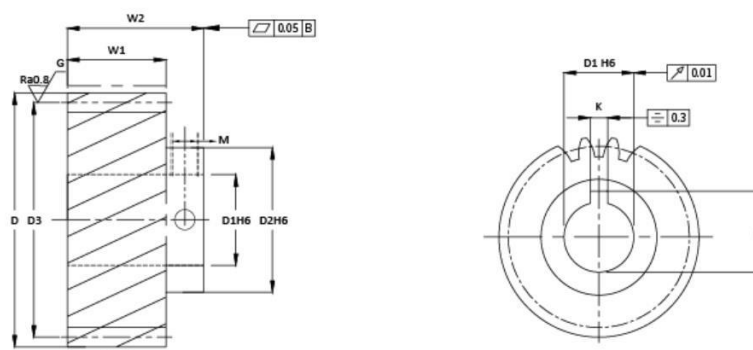
直齒磨削齒輪

制程說明：
 精度等級：DIN6h25(JIS2級)
 材料：合金鋼
 齒型：直齒
 齒面處理：磨削
 硬度處理：HRC42~45度
 壓力角：20度

Straight tooth grinding gear

Manufacturing Description:
 Precision Grade: DIN 6h25 (JIS Grade 2)
 Material: Alloy steel
 Type: Helical Rack
 Treatment of Teeth: Ground
 Hardness: HRC42~45 degree
 Pressure Angle: 20degree

(S45C) DIN 6



單位/Dimension : mm

型号Order	精度DIN	齿数Tooth No	D1H6	D2	D3	D	W1	W2	M	K	H	F _{ta} kN
模數 4 / Module 4												
360401122	DIN6	22	45	75	88.00	96	40	80	10*2	14	48.8	15.81
360401125	DIN6	25	32	65	100.00	108	40	75	10*2	10	35.3	20.45
360401125	DIN6	25	35	80	100.00	108	40	80	10*2	10	38.3	20.45
360401125	DIN6	25	40	80	100.00	108	40	80	10*2	12	43.3	20.45
360401125	DIN6	25	45	85	100.00	108	40	75	10*2	14	49.8	20.45
360401125	DIN6	25	55	85	100.00	108	40	80	10*2	14	58.8	20.45
360401130	DIN6	30	32	60	120.00	128	40	75	10*2	10	35.3	23.45
360401130	DIN6	30	35	65	120.00	128	40	80	10*2	12	38.3	23.45
360401130	DIN6	30	40	90	120.00	128	40	80	10*2	14	43.3	23.45
360401130	DIN6	30	45	95	120.00	128	40	80	10*2	14	48.8	23.45
360401130	DIN6	30	55	95	120.00	128	40	80	10*2	14	58.8	23.45
360401132	DIN6	32	35	70	128.00	136	40	80	10*2	10	38.3	26.18
360401132	DIN6	32	45	95	128.00	136	40	80	10*2	14	48.8	26.18
360401132	DIN6	32	55	95	128.00	136	40	80	10*2	14	59.3	26.18
360401132	DIN6	32	75	100	128.00	136	40	80	10*2	14	79.9	26.18
360401140	DIN6	40	45	100	160.00	168	40	75	10*2	14	48.8	32.72
360401140	DIN6	40	60	100	160.00	168	40	80	10*2	14	64.4	32.72
模數 5 / Module 5												
360501121	DIN6	21	45	95	105.00	115	50	80	10*2	14	48.8	23.59
360501121	DIN6	21	55	95	105.00	115	50	90	10*2	16	59.3	23.59
360501125	DIN6	25	45	95	125.00	135	50	80	10*2	14	48.8	31.95
360501125	DIN6	25	55	95	125.00	135	50	90	10*2	16	59.3	31.95
360501125	DIN6	25	75	110	125.00	135	50	90	10*2	20	79.9	31.95
模數 6 / Module 6												
360601121	DIN6	21	55	98	126.00	138	60	100	10*2	16	59.3	33.97
360601121	DIN6	21	75	110	126.00	138	60	120	10*2	20	79.9	33.97
360601125	DIN6	25	55	98	150.00	162	60	100	10*2	16	59.3	46.01
360601125	DIN6	25	75	120	150.00	162	60	120	10*2	20	79.9	46.01
模數 8 / Module 8												
360801120	DIN6	20	75	120	160.00	176	80	140	10*2	20	79.9	57.51
360801120	DIN6	20	85	130	160.00	176	80	145	10*2	22	90.4	57.51



直齒 Straight

直齒磨削齒輪

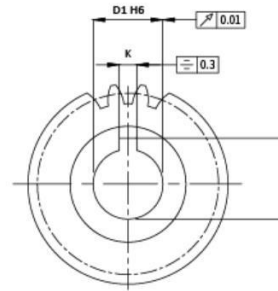
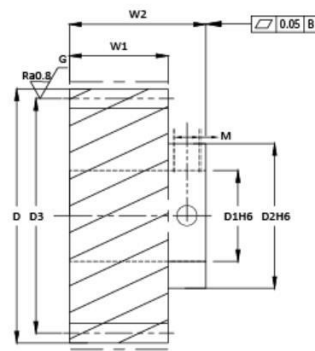
制程說明：
 精度等級：DIN6h25(JIS2級)
 材料：合金鋼
 齒型：直齒
 齒面處理：磨削
 硬度處理：HRC42~45度
 壓力角：20度

Straight tooth grinding gear

Manufacturing Description:
 Precision Grade: DIN 6h25 (JIS Grade 2)
 Material: Alloy steel
 Type: Helical Rack
 Treatment of Teeth: Ground
 Hardness: HRC42~45 degree
 Pressure Angle: 20degree

※ 此樣本中的所有產品型號及參數如有變更恕不另行通告，訂貨前請與本公司聯絡確認，可按要求定制

(S45C) DIN 9



單位/Dimension :mm

型号Order	精度DIN	齿数Tooth No	D1H6	D2	D3	D	W1	W2	M	K	H	F _{ta} kN
模數2 / Module 2												
390201120	DIN9	20	19	36	40.00	44	25	40	6*2	6	21.8	2.63
390201120	DIN9	20	22	36	40.00	44	25	40	6*2	6	24.8	2.63
390201122	DIN9	22	19	36	44.00	48	25	40	6*2	6	21.8	3.24
390201122	DIN9	22	22	36	44.00	48	25	40	6*2	6	24.8	3.24
390201125	DIN9	25	19	36	50.00	54	25	56	6*2	6	21.8	3.68
390201125	DIN9	25	22	40	50.00	54	25	56	6*2	6	24.8	3.68
390201125	DIN9	25	24	40	50.00	54	25	56	8*2	8	26.8	3.68
390201125	DIN9	25	32	50	50.00	54	25	56	8*2	8	35.3	3.68
390201130	DIN9	30	19	48	60.00	64	25	60	8*2	6	21.8	4.42
390201130	DIN9	30	22	50	60.00	64	25	60	8*2	6	24.8	4.42
390201130	DIN9	30	24	50	60.00	64	25	60	8*2	8	26.8	4.42
390201130	DIN9	30	32	50	60.00	64	25	60	8*2	10	35.3	4.42
390201132	DIN9	32	19	36	64.00	68	25	45	8*2	6	21.8	5.36
390201132	DIN9	32	22	36	64.00	68	25	45	8*2	8	24.8	5.36
390201132	DIN9	32	24	40	64.00	68	25	45	8*2	8	26.8	5.36
390201132	DIN9	32	32	50	64.00	68	25	45	10*2	10	35.3	5.36
390201136	DIN9	36	19	48	72.00	76	25	45	10*2	8	21.3	6.03
390201136	DIN9	36	22	48	72.00	76	25	45	10*2	8	24.3	6.03
390201136	DIN9	36	24	48	72.00	76	25	50	10*2	8	26.3	6.03
390201136	DIN9	36	32	58	72.00	76	25	50	10*2	10	35.3	6.03
390201136	DIN9	36	35	60	72.00	76	25	55	10*2	12	38.3	6.03
390201136	DIN9	36	40	65	72.00	76	25	55	10*2	14	43.3	6.03
390201140	DIN9	40	24	48	80.00	84	25	65	10*2	8	24.8	6.70
390201140	DIN9	40	32	55	80.00	84	25	65	10*2	10	35.3	6.70
390201140	DIN9	40	35	65	80.00	84	25	65	10*2	10	38.3	6.70
390201140	DIN9	40	40	68	80.00	84	25	65	10*2	12	43.3	6.70
390201145	DIN9	45	32	60	90.00	94	25	65	10*2	10	35.3	7.54
390201145	DIN9	45	35	70	90.00	94	25	65	10*2	10	38.3	7.54
390201145	DIN9	45	45	75	90.00	94	25	70	10*2	14	48.8	7.54
模數3 / Module 3												
390301118	DIN9	18	22	40	54.00	60	30	50	10*2	8	24.8	4.77
390301118	DIN9	18	24	45	54.00	60	30	50	10*2	8	26.8	4.77

直齒精密齒輪

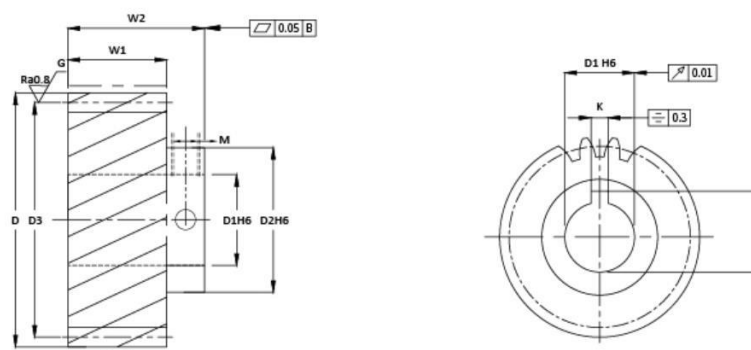
制程說明：
 精度等級：DIN9e27(JIS5級)
 材料：合金鋼
 齒型：直齒
 齒面處理：精銑
 硬度處理：HRC42~45度
 壓力角：20度

Straight precision gear

Manufacturing Description:
 Precision Grade: DIN 9e27 (JIS Grade 5)
 Material: Alloy steel
 Type: Helical Rack
 Treatment of Teeth: Milled
 Hardness: HRC42~45 degree
 Pressure Angle: 20degree

※ 此樣本中的所有產品型號及參數如有變更恕不另行通告，訂貨前請與本公司聯絡確認，可按要求定制

(S45C) DIN 9



單位/Dimension :mm

型号Order	精度DIN	齒數Tooth No	D1H6	D2	D3	D	W1	W2	M	K	H	F _{ta} kN
模數3 / Module 3												
390301120	DIN9	20	24	45	60	66	30	50	10*2	10	26.8	5.30
390301125	DIN9	25	22	40	75	81	30	75	10*2	8	24.8	7.54
390301125	DIN9	25	24	45	75	81	30	75	10*2	8	26.8	7.54
390301125	DIN9	25	32	55	75	81	30	75	10*2	10	35.3	7.54
390301125	DIN9	25	35	55	75	81	30	75	10*2	10	38.3	7.54
390301125	DIN9	25	45	70	75	81	30	75	10*2	12	48.8	7.54
390301130	DIN9	30	24	45	90	96	30	75	10*2	8	26.8	9.04
390301130	DIN9	30	32	55	90	96	30	75	10*2	10	35.3	9.04
390301130	DIN9	30	35	55	90	96	30	75	10*2	12	38.3	9.04
390301132	DIN9	32	24	55	96	102	30	75	10*2	8	26.8	9.65
390301132	DIN9	32	32	55	96	102	30	75	10*2	10	35.3	9.65
390301132	DIN9	32	35	65	96	102	30	75	10*2	10	38.3	9.65
390301132	DIN9	32	40	70	96	102	30	75	10*2	12	43.3	9.65
390301132	DIN9	32	45	70	96	102	30	75	10*2	12	48.8	9.65
390301136	DIN9	36	24	65	108	114	30	75	10*2	8	24.8	10.85
390301136	DIN9	36	32	75	108	114	30	75	10*2	10	35.3	10.85
390301136	DIN9	36	35	75	108	114	30	75	10*2	12	38.3	10.85
390301136	DIN9	36	45	75	108	114	30	75	10*2	12	48.8	10.85
390301140	DIN9	40	32	65	120	126	30	75	10*2	10	35.3	12.06
390301140	DIN9	40	35	75	120	126	30	75	10*2	10	38.3	12.06
390301140	DIN9	40	45	90	120	126	30	75	10*2	12	48.8	12.06
390301140	DIN9	40	60	95	120	126	30	75	10*2	14	63.8	12.06
390301145	DIN9	45	32	95	135	141	30	75	10*2	10	35.3	13.57
390301145	DIN9	45	35	95	135	141	30	75	10*2	12	38.3	13.57
390301145	DIN9	45	45	98	135	141	30	75	10*2	14	48.8	13.57
模數4 / Module 4												
390401120	DIN9	20	32	55	80	88	40	75	10*2	10	35.3	9.42
390401120	DIN9	20	35	65	80	88	40	75	10*2	10	38.3	9.42
390401120	DIN9	20	40	70	80	88	40	80	10*2	12	43.3	9.42
390401120	DIN9	20	45	75	80	88	40	75	10*2	14	48.8	9.42
390401122	DIN9	22	35	65	88	96	40	80	10*2	12	38.3	9.89

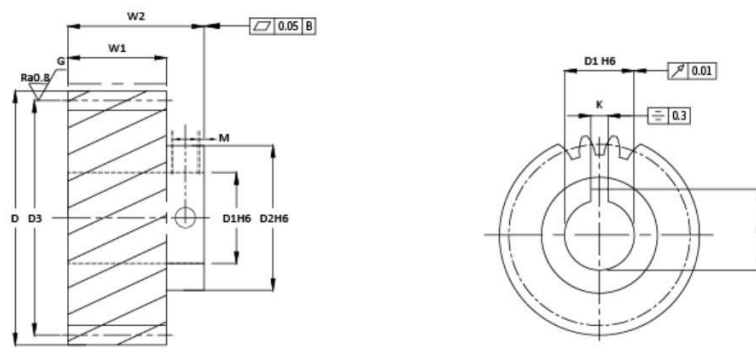
直齒精密齒輪

制程說明：
 精度等級：DIN9e27(JIS5級)
 材料：合金鋼
 齒型：直齒
 齒面處理：精銑
 硬度處理：HRC42~45度
 壓力角：20度

Straight precision gear

Manufacturing Description:
 Precision Grade: DIN 9e27 (JIS Grade 5)
 Material: Alloy steel
 Type: Helical Rack
 Treatment of Teeth: Milled
 Hardness: HRC42~45 degree
 Pressure Angle: 20degree

(S45C) DIN 9



單位/Dimension : mm

型号Order	精度DIN	齿数Tooth No	D1H6	D2	D3	D	W1	W2	M	K	H	F _{ta} kN
模數 4 / Module 4												
390401122	DIN9	22	45	75	88	96	40	80	10*2	14	48.8	9.89
390401125	DIN9	25	32	65	100	108	40	75	10*2	10	35.3	11.30
390401125	DIN9	25	35	70	100	108	40	80	10*2	10	38.3	11.30
390401125	DIN9	25	40	75	100	108	40	80	10*2	12	43.3	11.30
390401125	DIN9	25	45	80	100	108	40	75	10*2	14	49.8	11.30
390401125	DIN9	25	55	85	100	108	40	80	10*2	14	58.8	11.30
390401130	DIN9	30	32	60	120	128	40	75	10*2	10	35.3	13.40
390401130	DIN9	30	35	80	120	128	40	80	10*2	12	38.3	13.40
390401130	DIN9	30	40	85	120	128	40	80	10*2	14	43.3	13.40
390401130	DIN9	30	45	95	120	128	40	80	10*2	14	48.8	13.40
390401130	DIN9	30	55	95	120	128	40	80	10*2	14	58.8	13.40
390401132	DIN9	32	35	70	128	136	40	80	10*2	10	38.3	15.30
390401132	DIN9	32	45	90	128	136	40	80	10*2	14	48.8	15.30
390401132	DIN9	32	55	95	128	136	40	80	10*2	14	59.3	15.30
390401132	DIN9	32	75	100	128	136	40	80	10*2	14	79.9	15.30
390401140	DIN9	40	45	98	160	168	40	75	10*2	14	48.8	20.36
390401140	DIN9	40	60	110	160	168	40	80	10*2	14	64.4	20.36
模數 5 / Module 5												
390501121	DIN9	21	45	90	105	115	50	80	10*2	14	48.8	15.45
390501121	DIN9	21	55	95	105	115	50	90	10*2	16	59.3	15.45
390501125	DIN9	25	45	95	125	135	50	80	10*2	14	48.8	20.93
390501125	DIN9	25	55	95	125	135	50	90	10*2	16	59.3	20.93
390501125	DIN9	25	75	110	125	135	50	90	10*2	20	79.9	20.93
模數 6 / Module 6												
390601121	DIN9	21	55	90	126	138	60	100	10*2	16	59.3	23.31
390601121	DIN9	21	75	110	126	138	60	120	10*2	20	79.9	23.31
390601125	DIN9	25	55	95	150	162	60	100	10*2	16	59.3	30.14
390601125	DIN9	25	75	110	150	162	60	120	10*2	20	79.9	30.14
模數 8 / Module 8												
390801120	DIN9	20	75	120	160	176	80	140	10*2	20	79.9	37.68
390801120	DIN9	20	85	125	160	176	80	145	10*2	22	90.4	37.68

直齒精密齒輪

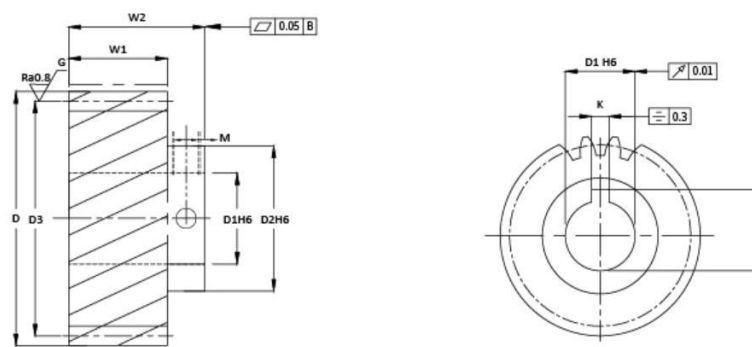
制程說明：
 精度等級：DIN9e27(JIS5級)
 材料：合金鋼
 齒型：直齒
 齒面處理：精銑
 硬度處理：HRC42~45度
 壓力角：20度

Straight precision gear

Manufacturing Description:
 Precision Grade: DIN 9e27 (JIS Grade 5)
 Material: Alloy steel
 Type: Helical Rack
 Treatment of Teeth: Milled
 Hardness: HRC42~45 degree
 Pressure Angle: 20degree

斜齒磨削齒輪

(S45C) DIN 6



單位/Dimension :mm

型号Order	精度DIN	齒數Tooth No	D1H6	D2	D3	D	W1	W2	M	K	H	F _{ta} kN
模數 1.5 / Module 1.5												
360152120	DIN6	20	14	25	31.831	34.831	17	25	6*2	4	16.3	4.48
360152120	DIN6	20	16	25	31.831	34.831	17	26	6*2	5	18.3	4.48
360152125	DIN6	25	16	30	39.789	42.789	17	26	6*2	5	18.3	6.37
360152125	DIN6	25	19	35	39.789	42.789	17	27	6*2	6	21.3	6.37
360152130	DIN6	30	19	35	47.747	50.747	17	27	8*2	6	21.3	7.12
360152130	DIN6	30	22	36	47.747	50.747	17	27	8*2	6	24.3	7.12
360152130	DIN6	30	24	40	47.747	50.747	17	27	8*2	6	26.3	7.12
模數 2 / Module 2												
360202120	DIN6	20	16	30	42.441	46.441	25	37	6*2	5	21.8	8.36
360202120	DIN6	20	19	35	42.441	46.441	25	37	6*2	6	21.3	8.36
360202120	DIN6	20	20	35	42.441	46.441	25	37	6*2	6	22.3	8.36
360202120	DIN6	20	22	35	42.441	46.441	25	37	6*2	6	24.3	8.36
360202125	DIN6	25	19	35	53.052	57.052	25	56	6*2	6	21.3	11.90
360202125	DIN6	25	20	40	53.052	57.052	25	56	6*2	6	22.3	11.90
360202125	DIN6	25	22	40	53.052	57.052	25	56	6*2	6	24.3	11.90
360202125	DIN6	25	24	40	53.052	57.052	25	56	6*2	6	26.3	11.90
360202125	DIN6	25	32	45	53.052	57.052	25	56	8*2	6	34.3	11.90
360202130	DIN6	30	19	55	63.662	67.662	25	56	6*2	6	21.8	13.30
360202130	DIN6	30	22	55	63.662	67.662	25	56	6*2	6	24.8	13.30
360202130	DIN6	30	24	55	63.662	67.662	25	56	6*2	8	26.8	13.30
360202130	DIN6	30	32	55	63.662	67.662	25	56	8*2	10	35.3	13.30
360202132	DIN6	32	22	55	67.906	71.906	25	56	6*2	6	24.3	13.49
360202132	DIN6	32	24	55	67.906	71.906	25	56	6*2	8	26.8	13.49
360202132	DIN6	32	32	55	67.906	71.906	25	56	8*2	10	35.3	13.49
360202136	DIN6	36	24	55	76.394	80.394	25	56	8*2	8	26.8	13.84
360202136	DIN6	36	32	55	76.394	80.394	25	56	10*2	10	35.3	13.84
模數 3 / Module 3												
360302118	DIN6	18	24	48	57.296	63.296	30	60	8*2	8	27.3	12.51
360302118	DIN6	18	32	50	57.296	63.296	30	60	10*2	10	35.3	12.51
360302118	DIN6	18	35	50	57.296	63.296	30	60	10*2	10	38.3	12.51
360302120	DIN6	20	22	50	63.662	69.662	30	60	8*2	8	24.3	14.08
360302120	DIN6	20	24	50	63.662	69.662	30	60	8*2	8	27.3	14.08
360302120	DIN6	20	32	55	63.662	69.662	30	60	10*2	10	35.3	14.08
360302120	DIN6	20	35	55	63.662	69.662	30	60	10*2	10	38.3	14.08
360302125	DIN6	25	22	70	79.578	85.578	30	65	8*2	6	24.3	19.01
360302125	DIN6	25	24	50	79.578	85.578	30	65	8*2	8	26.8	19.01
360302125	DIN6	25	32	60	79.578	85.578	30	65	8*2	10	35.3	19.01

斜齒磨削齒輪

制程說明：

精度等級：DIN6h25(JIS2級)

材料：合金鋼

齒型：斜齒

齒面處理：磨削

硬度處理：HRC42~45度

左旋角：19°31'42"

壓力角：20度

Helical grinding gear

Manufacturing Description:

Precision Grade: DIN 6h25 (JIS Grade 2)

Material: Alloy steel

Type: Helical Rack

Treatment of Teeth: Ground

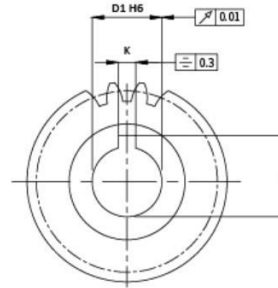
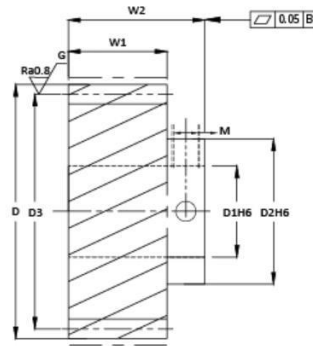
Hardness: HRC42~45 degree

Right Hand Angle: 19°31'42"

Pressure Angle: 20degree

※ 此樣本中的所有產品型號及參數如有變更恕不另行通告，訂貨前請與本公司聯絡確認，可按要求定制

(S45C) DIN 6



單位/Dimension :mm

型号Order	精度DIN	齒數Tooth No	D1H6	D2	D3	D	W1	W2	M	K	H	F _{ta} kN
模數3 / Module 3												
360302125	DIN6	25	35	60	79.578	85.578	30	65	10*2	10	38.3	19.01
360302125	DIN6	25	40	60	79.578	85.578	30	65	10*2	12	43.3	19.01
360302130	DIN6	30	24	55	95.493	101.493	30	65	8*2	8	26.8	19.37
360302130	DIN6	30	32	60	95.493	101.493	30	65	10*2	10	35.3	19.37
360302130	DIN6	30	35	70	95.493	101.493	30	65	10*2	12	38.3	19.37
360302132	DIN6	32	32	60	101.859	107.859	30	65	10*2	12	35.3	20.24
模數4 / Module 4												
360402118	DIN6	18	32	55	76.394	84.394	40	55	10*2	12	35.3	23.92
360402120	DIN6	20	35	70	84.882	92.882	40	55	10*2	12	38.3	26.78
360402122	DIN6	22	35	75	93.371	101.371	40	55	10*2	12	38.3	29.66
360402122	DIN6	22	45	75	93.371	101.371	40	55	10*2	14	48.3	29.66
360402125	DIN6	25	25	80	106.103	114.103	40	55	10*2	10	28.3	36.22
360402130	DIN6	30	32	90	127.324	135.324	40	85	10*2	10	35.3	38.00
360402130	DIN6	30	40	95	127.324	135.324	40	85	10*2	12	43.3	38.00
模數5 / Module 5												
360502118	DIN6	18	45	80	95.493	105.493	50	85	12*2	14	48.3	37.38
360502120	DIN6	20	40	80	106.103	116.103	50	85	12*2	14	43.3	41.84
360502122	DIN6	22	40	85	116.713	126.713	50	85	12*2	14	43.3	46.32
360502124	DIN6	24	45	90	127.324	137.324	50	85	12*2	14	48.3	55.93
360502124	DIN6	24	55	90	127.324	137.324	50	90	12*2	16	59.3	55.93
360502124	DIN6	24	75	95	127.324	137.324	50	90	12*2	20	79.9	55.93
360502130	DIN6	30	40	95	159.155	169.155	50	90	12*2	14	43.3	59.37
模數6 / Module 6												
360602120	DIN6	20	55	95	127.324	139.324	60	100	12*2	16	59.3	60.26
360602120	DIN6	20	75	95	127.324	139.324	60	120	12*2	20	79.9	60.26
360602122	DIN6	22	55	95	140.057	152.057	60	100	12*2	16	59.3	66.74
360602122	DIN6	22	75	120	140.057	152.057	60	120	12*2	20	79.9	66.74
360602125	DIN6	25	55	130	159.155	171.155	60	100	12*2	16	59.3	81.49
360602125	DIN6	25	75	140	159.155	171.155	60	120	12*2	20	79.9	81.49
360302130	DIN6	30	55	140	190.986	202.986	60	100	12*2	16	59.3	85.49
360302130	DIN6	30	75	140	190.986	202.986	60	120	12*2	20	79.9	85.49
模數8 / Module 8												
360802118	DIN6	18	75	135	152.788	168.788	80	140	12*2	20	79.9	95.68
360802118	DIN6	18	85	135	152.788	168.788	80	140	12*2	22	90.4	95.68
360802120	DIN6	20	75	135	169.766	185.766	80	145	12*2	20	79.9	107.12
360802120	DIN6	20	85	135	169.766	185.766	80	145	12*2	22	90.4	107.12
模數10 / Module 10												
361002120	DIN6	20	85	150	212.206	232.206	100	165	12*2	22	90.4	167.38

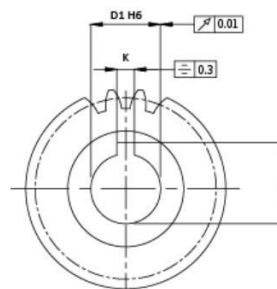
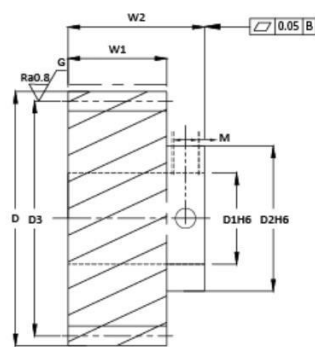
斜齒磨削齒輪

制程說明：
 精度等級：DIN6h25(JIS2級)
 材料：合金鋼
 齒型：斜齒
 齒面處理：磨削
 硬度處理：HRC42~45度
 左旋角：19°31'42"
 壓力角：20度

Helical grinding gear

Manufacturing Description:
 Precision Grade: DIN 6h25 (JIS Grade 2)
 Material: Alloy steel
 Type: Helical Rack
 Treatment of Teeth: Ground
 Hardness: HRC42~45 degree
 Right Hand Angle: 19°31'42"
 Pressure Angle: 20degree

(S45C) DIN 9



單位/Dimension :mm

型号Order	精度DIN	齒數Tooth No	D1H6	D2	D3	D	W1	W2	M	K	H	F _{ta} kN
模數 1.5 / Module 1.5												
390152120	DIN9	20	14	25	31.831	34.831	17	25	6*2	4	16.3	2.93
390152120	DIN9	20	16	25	31.831	34.831	17	26	6*2	5	18.3	2.93
390152125	DIN9	25	16	30	39.789	42.789	17	26	6*2	5	18.3	6.37
390152125	DIN9	25	19	35	39.789	42.789	17	27	6*2	6	21.3	6.37
390152130	DIN9	30	19	35	47.747	50.747	17	27	8*2	6	21.3	7.12
3390152130	DIN9	30	22	40	47.747	50.747	17	27	8*2	6	24.3	7.12
390152130	DIN9	30	24	40	47.747	50.747	17	27	8*2	6	26.3	7.12
模數 2 / Module 2												
390202120	DIN9	20	16	30	42.441	46.441	25	37	6*2	5	21.8	5.48
390202120	DIN9	20	19	30	42.441	46.441	25	37	6*2	6	21.3	5.48
390202120	DIN9	20	20	30	42.441	46.441	25	37	6*2	6	22.3	5.48
390202120	DIN9	20	22	36	42.441	46.441	25	37	6*2	6	24.3	5.48
390202125	DIN9	25	19	40	53.052	57.052	25	56	6*2	6	21.3	7.80
390202125	DIN9	25	20	40	53.052	57.052	25	56	6*2	6	22.3	7.80
390202125	DIN9	25	22	40	53.052	57.052	25	56	6*2	6	24.3	7.80
390202125	DIN9	25	24	40	53.052	57.052	25	56	6*2	6	26.3	7.80
390202125	DIN9	25	32	45	53.052	57.052	25	56	8*2	6	34.3	7.80
390202130	DIN9	30	19	55	63.662	67.662	25	56	6*2	6	21.8	9.47
390202130	DIN9	30	22	55	63.662	67.662	25	56	6*2	6	24.8	9.47
390202130	DIN9	30	24	55	63.662	67.662	25	56	6*2	8	26.8	9.47
390202130	DIN9	30	32	55	63.662	67.662	25	56	8*2	10	35.3	9.47
390202132	DIN9	32	22	55	67.906	71.906	25	56	6*2	6	24.3	9.90
390202132	DIN9	32	24	55	67.906	71.906	25	56	6*2	8	26.8	9.90
390202132	DIN9	32	32	55	67.906	71.906	25	56	8*2	10	35.3	9.90
390202136	DIN9	36	24	55	76.394	80.394	25	56	8*2	8	26.8	10.15
390202136	DIN9	36	32	55	76.394	80.394	25	56	10*2	10	35.3	10.15
模數 3 / Module 3												
390302118	DIN9	18	24	50	57.296	63.296	30	60	8*2	8	27.3	12.51
390302118	DIN9	18	32	50	57.296	63.296	30	60	10*2	10	35.3	12.51
390302118	DIN9	18	35	50	57.296	63.296	30	60	10*2	10	38.3	12.51
390302120	DIN9	20	22	50	63.662	69.662	30	60	8*2	8	24.3	9.17
390302120	DIN9	20	24	48	63.662	69.662	30	60	8*2	8	27.3	9.17
390302120	DIN9	20	32	50	63.662	69.662	30	60	10*2	10	35.3	9.17
390302120	DIN9	20	35	55	63.662	69.662	30	60	10*2	10	38.3	9.17
390302125	DIN9	25	22	70	79.578	85.578	30	65	8*2	6	24.3	11.56
390302125	DIN9	25	24	50	79.578	85.578	30	65	8*2	8	26.8	11.56
390302125	DIN9	25	32	55	79.578	85.578	30	65	8*2	10	35.3	11.56

斜齒精密齒輪

制程說明：

精度等級：DIN9e27(JIS5級)

材料：合金鋼

齒型：斜齒

齒面處理：精銑

硬度處理：HRC42~45度

左旋角：19°31'42"

壓力角：20度

Helical precision gear

Manufacturing Description:

Precision Grade: DIN 9e27 (JIS Grade 5)

Material: Alloy steel

Type: Helical Rack

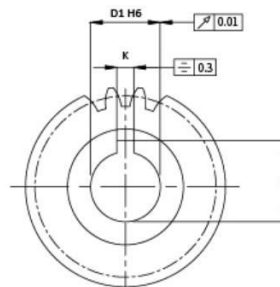
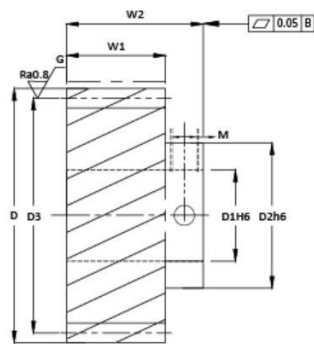
Treatment of Teeth: Milled

Hardness: HRC42~45 degree

Right Hand Angle: 19°31'42"

Pressure Angle: 20degree

(S45C) DIN 9



單位/Dimension :mm

型号Order	精度DIN	齒數Tooth No	D1H6	D2	D3	D	W1	W2	M	K	H	F _{ta} kN
模數 3 / Module 3												
390302125	DIN9	25	35	60	79.578	85.578	30	65	10*2	10	38.3	11.56
390302125	DIN9	25	40	65	79.578	85.578	30	65	10*2	12	43.3	11.56
390302130	DIN9	30	24	70	95.493	101.493	30	65	8*2	8	26.8	12.37
390302130	DIN9	30	32	75	95.493	101.493	30	65	10*2	10	35.3	12.37
390302130	DIN9	30	35	75	95.493	101.493	30	65	10*2	12	38.3	12.37
390302132	DIN9	32	32	75	101.859	107.859	30	65	10*2	12	35.3	14.84
模數 4 / Module 4												
390402118	DIN9	18	32	60	76.394	84.394	40	55	10*2	12	35.3	15.67
390402120	DIN9	20	35	60	84.882	92.882	40	55	10*2	12	38.3	17.55
390402122	DIN9	22	35	70	93.371	101.371	40	55	10*2	12	38.3	19.43
390402122	DIN9	22	45	70	93.371	101.371	40	55	10*2	14	48.3	19.43
390402125	DIN9	25	25	85	106.103	114.103	40	55	10*2	10	28.3	25.35
390402130	DIN9	30	32	90	127.324	135.324	40	85	10*2	10	35.3	38.00
390402130	DIN9	30	40	90	127.324	135.324	40	85	10*2	12	43.3	38.00
模數 5 / Module 5												
390502118	DIN9	18	45	70	95.493	105.493	50	85	12*2	14	48.3	24.49
390502120	DIN9	20	40	80	106.103	116.103	50	85	12*2	14	43.3	41.84
390502122	DIN9	22	40	85	116.713	126.713	50	85	12*2	14	43.3	46.32
390502124	DIN9	24	45	95	127.324	137.324	50	85	12*2	14	48.3	37.93
390502124	DIN9	24	55	95	127.324	137.324	50	90	12*2	16	59.3	37.93
390502124	DIN9	24	75	110	127.324	137.324	50	90	12*2	20	79.9	37.93
390502130	DIN9	30	40	110	159.155	169.155	50	90	12*2	14	43.3	59.37
模數 6 / Module 6												
390602120	DIN9	20	55	90	127.324	139.324	60	100	12*2	16	59.3	39.48
390602120	DIN9	20	75	110	127.324	139.324	60	120	12*2	20	79.9	39.48
390602122	DIN9	22	55	95	140.057	152.057	60	100	12*2	16	59.3	66.74
390602122	DIN9	22	75	110	140.057	152.057	60	120	12*2	20	79.9	66.74
390602125	DIN9	25	55	110	159.155	171.155	60	100	12*2	16	59.3	81.49
390602125	DIN9	25	75	120	159.155	171.155	60	120	12*2	20	79.9	81.49
390302130	DIN9	30	55	95	190.986	202.986	60	100	12*2	16	59.3	85.49
390302130	DIN9	30	75	130	190.986	202.986	60	120	12*2	20	79.9	85.49
模數 8 / Module 8												
390802118	DIN9	18	75	130	152.788	168.788	80	140	12*2	20	79.9	62.69
390802118	DIN9	18	85	130	152.788	168.788	80	140	12*2	22	90.4	62.69
390802120	DIN9	20	75	130	169.766	185.766	80	145	12*2	20	79.9	70.18
390802120	DIN9	20	85	135	169.766	185.766	80	145	12*2	22	90.4	70.18
模數 10 / Module 10												
391002120	DIN9	20	85	160	212.206	232.206	100	165	12*2	22	90.4	109.66

斜齒精密齒輪

制程說明：

精度等級：DIN9e27(JIS5級)

材料：合金鋼

齒型：斜齒

齒面處理：精銑

硬度處理：HRC42~45度

左旋角：19°31'42"

壓力角：20度

Helical precision gear

Manufacturing Description:

Precision Grade: DIN 9e27 (JIS Grade 5)

Material: Alloy steel

Type: Helical Rack

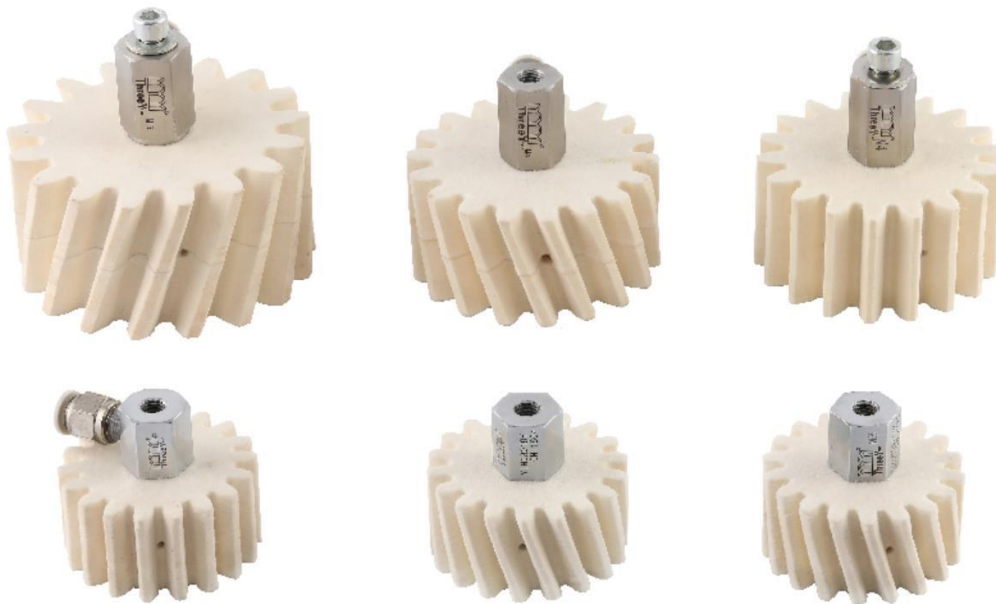
Treatment of Teeth: Milled

Hardness: HRC42~45 degree

Right Hand Angle: 19°31'42"

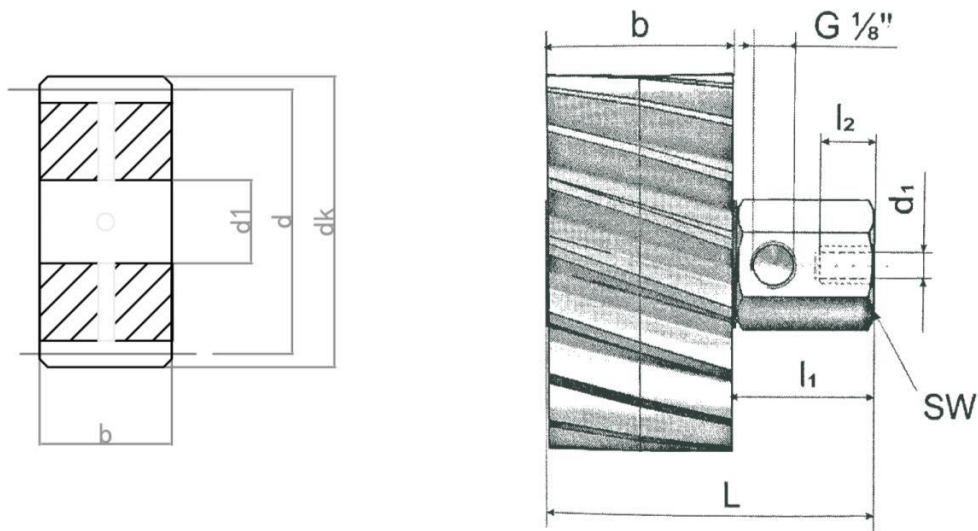
Pressure Angle: 20degree

潤滑系統型號說明 Lubrication system model description



1st	2nd	3rd	4th	5th	6th
材料 Material	齒形 Tooth profile	模數 Modulus	齒數 Number of teeth	軸 Axis	註油器 Oil injector
Y	S	030	18	Y	E系列：V系列：M系列：EX系列
羊毛氈	S=直齒 LH=左旋 RH=右旋	030=模數3 040=模數4 050=模數5	18齒	Y=帶軸 N=無軸	E60=60CC V125=125CC E120=120CC V250=250CC E240=240CC
Wool felt	S=Straight tooth LH=left hand RH=Right-handed	030=Module 3 040=Module 4 050=Module 5	18 teeth	Y=with shaft N=no shaft	M60=60CC EX60=60CC M125=125CC EX125=125CC M250=250CC EX250=250CC

例如：YLH 030 18、YLH 030 18Y、YLH 030 18Y E180



毛氈齒輪及安裝配件

型号	毛氈齒輪部分F						安裝軸部分S					
	模数	齒数	d	d1	dk	b	b	D	l2	l1	L	SW
YLH02018	2	18	38.20	12	42.00	25	25.2	M8	10	30	55.2	19
YRH02018	2	18	38.20	12	42.00	25	25.2	M8	10	30	55.2	19
YS02018	2	18	36.00	12	40.00	25	25.2	M8	10	30	55.2	19
YLH03018	3	18	57.30	12	63.00	30	30.2	M8	10	30	60.2	19
YRH03018	3	18	57.30	12	63.00	30	30.2	M8	10	30	60.2	19
YS03018	3	18	54.00	12	60.00	30	30.2	M8	10	30	60.2	19
YLH04018	4	18	76.40	12	84.40	40	40.2	M8	10	30	70.2	19
YRH04018	4	18	76.40	12	84.40	40	40.2	M8	10	30	70.2	19
YS04018	4	18	72.00	12	80.00	40	40.2	M8	10	30	70.2	19
YLH05018	5	18	95.50	20	105.50	50	50.2	M8	10	30	80.2	24
YRH05018	5	18	95.50	20	105.50	50	50.2	M8	10	30	80.2	24
YS05018	5	18	90.00	20	100.00	50	50.2	M8	10	30	80.2	24
YLH06018	6	18	114.60	20	126.60	60	60.2	M8	10	30	90.2	24
YRH06018	6	18	114.60	20	126.60	60	60.2	M8	10	30	90.2	24
YS06018	6	18	108.00	20	120.00	60	60.2	M8	10	30	90.2	24
YLH08018	8	18	152.79	20	168.79	80	80.2	M8	10	30	110.2	24
YRH08018	8	18	152.79	20	168.79	80	80.2	M8	10	30	110.2	24
YS08018	8	18	144.00	20	160.00	80	80.2	M8	10	30	110.2	24



Pulsarlube E 自動單點注油器



Pulsarlube E 有更優異的成本競爭力和用戶友好度等優勢..Pulsarlube E的創新設計可以滿足工業應用領域的更多需求.

Pulsarlube E 采用先進的電化學反應技術,可通過系統性使用電解液和電能產生惰性 (N₂) 氮氣.利用直觀易懂的選擇體系模式來確保簡易而無差錯的操作

Pulsarlube V 的定向邏輯微處理器芯片控制技術在產品的編程設置上實現壹鍵式簡化操作. Pulsarlube V通過電解液和電能生成惰性氣體.

活塞上方壓力的間歇式供給可為您的關鍵轉動設備精確提供新鮮的潤滑油脂

Pulsarlube V 自動單點注油器

Pulsarlube E&V產品參數

氣體發生方式	氮 (N ₂) 氣	氮 (N ₂) 氣
油脂容量	60cc,120cc,240cc	125cc,250cc
工作溫度	-20°C-55°C	-20°C-55°C
工作壓力	最大5kgf/Cm ² (70PSI)	最大5kgf/Cm ² (70PSI)
遠程安裝	可達1m,使用8mm外徑管子	可達1m,使用8mm外徑管子
產品尺寸	60cc :77mmx92mm 1	125cc:97mmx134mm
	20cc:77mmx112mm	250cc:97mmx152mm
	240cc:77mmx157mm	
認證/防護等級	IP68	IP68



Pulsarlube S 獨特而新穎的設計中,使用底座彈簧將潤滑油脂向上推送至加脂器的油脂注油孔處.

這壹全新設計樣式通過上下推送的方式大大減緩了油脂分離的問題.上行活塞可防止油脂在重力作用下漏出,同時將油脂完全保留在潤滑油箱內,從而防止油脂硬化,並方便將加脂器的油脂完全清空.

	100cc		1/4" PT
工作溫度範圍	23°C-121°C	尺寸	67mmx129mm
	100cc :67mmX129mm		

Pulsarlube M 自动单点注油器



在設計上,創新型Pulsarlube M 確保潤滑可靠性的同時還通過先進的計算機控制系統節約降低潤滑成本.

通過遠程安裝功能,本產品成為難及場所/危險區域的理想選擇.

60cc	91mmX183mm
125cc	91mmX183mm
250cc	91mmX210mm

Pulsarlube EX 自动单点注油器

Pulsarlube EX 屬於I類2檔CD組認證的電池驅動式單點加脂器,配備強大的正排量泵,可為您的設備提供可靠的潤滑

Pulsarlube EX 的特殊設計擁有強化的外殼保護,可用於在Class I, Div. II, Sec. C, D 限制類區域工作.

Pulsarlube EX已通過UL實驗室的測試並且滿足下列要求:

UL70.石油註油產品用電動泵.

60cc	91mmX183mm
125cc	91mmX183mm
250cc	91mmX210mm



容量	60cc,125cc,250cc	60cc,125cc,250cc
注油周期	60cc:1~12个月 125, 250cc:半个月,1,2,3,6&12个月	60cc:1~12个月 125, 250cc:半个月,1,2,3,6&12个月
工作壓力	平均 30kgf/cm ² (425psi) 最大 80kgf/cm ² (1140psi)	最大 15kgf/cm ² (200psi) -15°C~60°C
工作溫度範圍	-15°C~60°C -40°C~60°C (使用鋰電池)	3/8' PT 每冲程0.34cc
安裝螺紋尺寸	3/8' PT	IP54
注油量	20°C下每冲程0.34cc	最大.3m使用單根6mm(1/4)' 接綫
保護等級	IP54	
多點潤滑	可進行8點潤滑,每個點6m(20ft)	

Product installation and spare parts selection 產品的安裝及備件選擇

壹次性單點系列自動註油器系統經設計可在相對低壓環境下工作

因此，建議將這些產品安裝在離軸承盡可能近的位置（圖1和2）。

由於循環使用的自動註油器是設計用於高壓工作（10-60公斤kgf/平方厘米，可延長3-6米）

因此可以遠距離安裝並多點進行潤滑



图 1. 直接安装与直接斜角安装



图 2. 使用延长管的安装和远程安装

安装部件

<p>直通变径头</p>	3/8"F	1/4"M	BSPT
	3/8"F	1/8"M	
	1/4"F	1/4"M	
<p>插座转接</p>	1/4"F	1/8"M	BSPT/ NPT
	1/4"F	1/4"F	
<p>45° 变径头</p>	1/8"F	1/8"F	BSPT
	1/4"F	1/4"F	
<p>90° 弯头</p>	1/4"F	1/4"M	BSPT
	1/8"F	1/8"M	
<p>延长管</p>	1/8"M	1/8"M	50mm BSPT
	1/8"M	1/8"M	100mm BSPT
<p>一次装入零件与预充油聚氨酯管材</p>	Fits 5/16" tube	1/8"M	BSPT



Multi-point use-only recycled products 多點使用—僅限循環使用產品

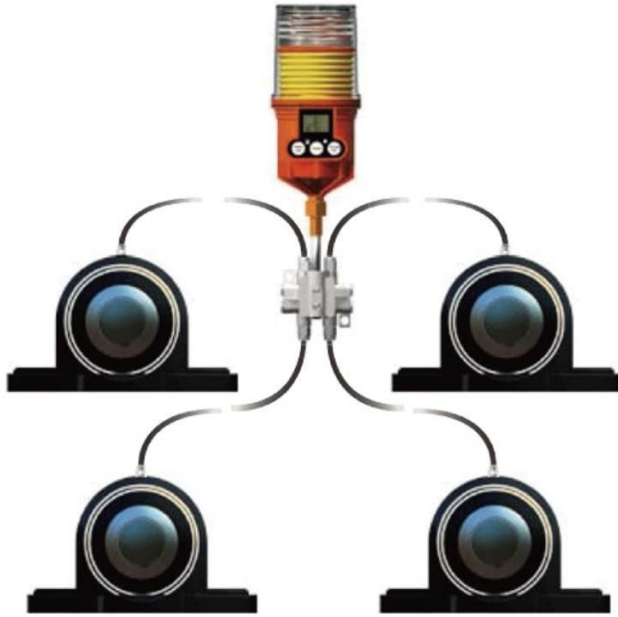
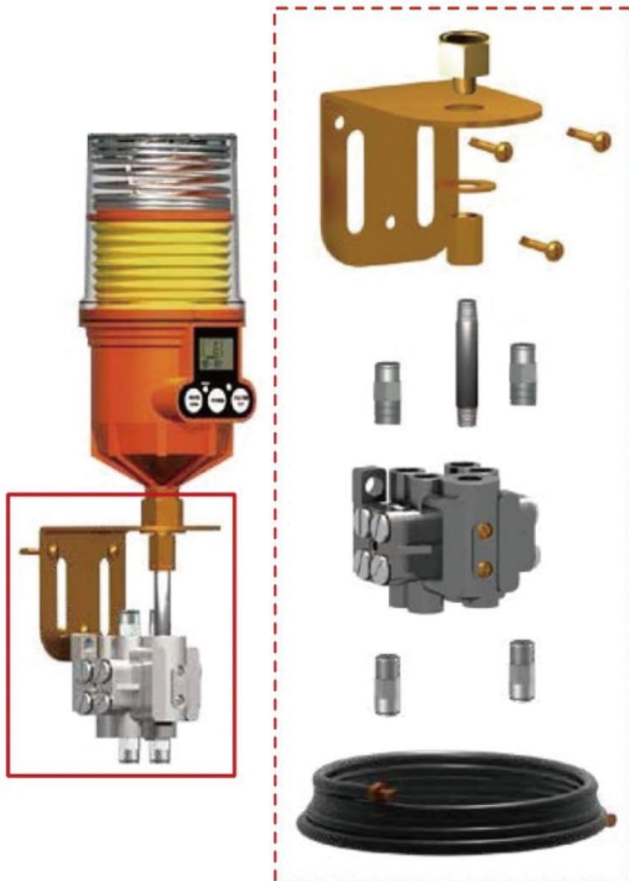


图 3. 使用分配块的多点润滑

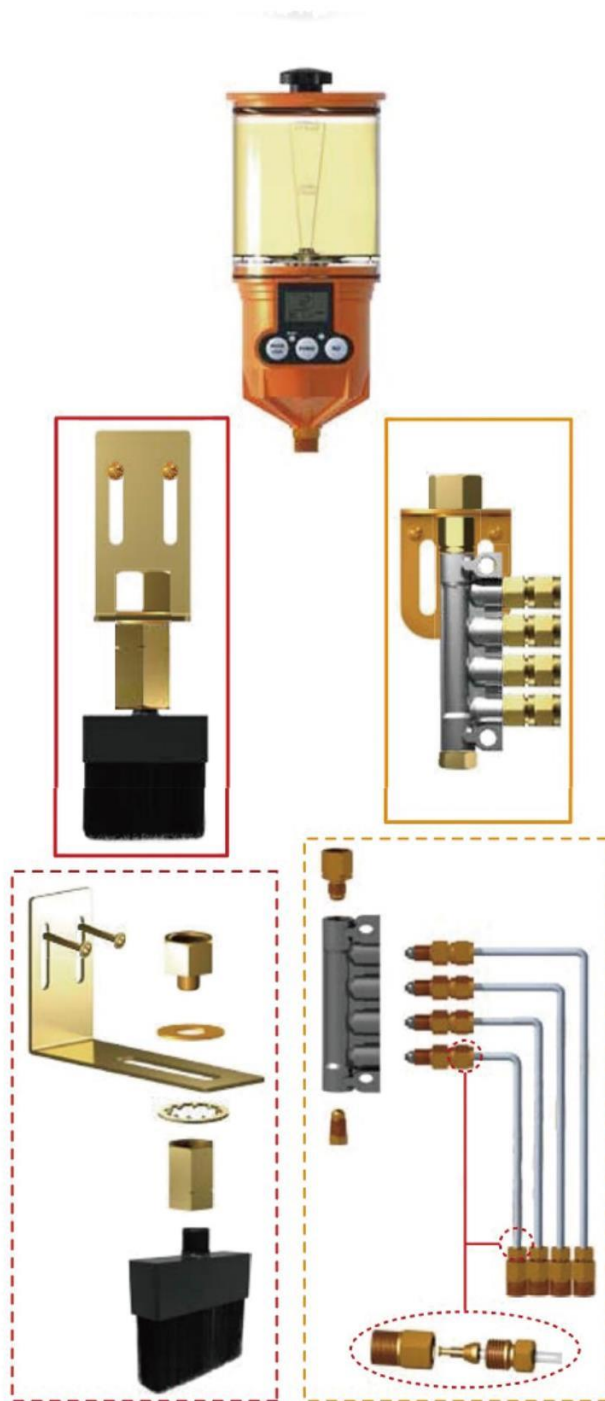
多点润滑的安装部件

远程安装工具

安装托架 总成		L 型安装托架 钢质垫片 自攻螺丝		
直通变径头		3/8" F	1/4" M	BSPT
直通栓扭		1/4" F	1/4" F	
延长管		1/8" M	1/8" M	50mm BSPT
		1/8" M	1/8" M	100mm BSPT
一次装入 管材零件		适合 6mm 外径 管材	1/8" M	BSPT
滑脂连续分 配块		U-4R	2, 3, 4 孔	
		U-6R	5, 6 孔	
		U-8R	7, 8 孔	
交叉孔装置		立式	两孔合一	
输油管 6mm 外径管材		空	延长接线为 3m(10ft)	
		预充油		



Mounting options for oil supplement 机油补充器的安装选件



保质期与保修
 产品的保质期至购买之日起1年包换
 两年免费保修，人为损坏除外。
 平均使用寿命6年以上

安装部件

远程安装工具				
安装托架总成		L 型安装托架 钢质垫片 自攻螺丝		
直通变径头		3/8" F	1/8" M	BSPT
变径头		1/8" F	M8	用于注油分配
分配器		6(4P) M8	可达 4 孔	
油塞		M8		
阻流阀		M8	连接分配器和管材	
分配管		4mm 外径 2.5mm 内径 尼龙管	12m (30ft)	
接头		Ø4mm 1/8" M	含 Ø4mm 套环 Ø4mm x Ø2.5mm 嵌片	
油刷工具				
安装托架总成		L 型安装托架 钢质垫片 自攻螺丝		
直通变径头		3/8" F	1/8" M	BSPT
油刷接头		1/8" F	1/8" F	BSPT/ NPT
1/8" F NPT 油刷	塑料		不锈钢	



齒輪與齒條的強度計算公式

齒輪和齒條的強度通常用彎曲強度和表面耐久性來說明。兩者在應用上都很重要。特別是，當應用環境嚴格時，每個參數都需要進一步討論。

以下公式基於 JGMA (日本齒輪製造商協會) 的標準。以下規格僅供參考。

JGMA 401-01 直齒與斜齒彎曲強度計算公式
JGMA 402-01 直齒與斜齒表面耐久性計算公式

彎曲強度和耐久性規格通常用於製造業中的直齒和斜齒 (包括齒條和齒輪)，範圍如下：

模數： m 1.5 to 25 mm
節圓直徑： d 25 to 3200 mm
切向速度： v \leq 5 m/秒
迴轉速度： n \leq 3600 rpm

轉換公式：功率，扭矩和力
齒輪強度和耐用性與功率和力的傳輸有關。切向力的計算基於節圓， F_t (kgf)，功率 P (kw) 和扭矩 T (kgf•m)。

參考公式如下：

$$F_t = \frac{102P}{V} = \frac{19.5 \times 10^6 P}{d_w n} = \frac{2000T}{d_w}$$

$$P = \frac{F_t}{102} = \frac{10^{-6}}{1.95} F_t d_w n$$

$$T = \frac{F_t d_w}{2000} = \frac{947P}{n}$$

其中，咬合節圓直徑的水平切向速度

$$V = \frac{d_w n}{19100} \text{ (m/sec)}$$

dw: 咬合的節圓直徑 (mm)
n: 迴轉速度 (rpm)

產品選用計算：

1. 上述切向力 F_t 的計算方法，可依據不同輸入條件計算出 F_t 值的大小；
2. 型錄中各項產品提供最大允許切向力 F_{ta} 給使用者作設計上的比對；
3. 使用 F_{ta} 時，依據使用條件不同，需配合目錄上所提供的負荷係數 K_a 和壽命係數 K_L 進行修正；

$$F'_{ta} = \frac{F_{ta}}{K_a \times K_L}$$

4. F_t 值須小於 F'_{ta} ；
5. 留意產品型錄上的 F_{ta} 單位為 kN，而切向力 F_t 的計算單位為 kgf，比對時須進行單位轉換。

備註：

1 公斤力 = 9.807 牛頓 = 0.0098 千牛頓
1 千牛頓 = 101.972 公斤力

Strength and Durability of Gears

The strength of gears is commonly illustrated with bending strength and surface durability. Both are important on application. In particularly, when applications are severe, each parameter requires further discussion.

The following formulas are based on standards of JGMA (Japanese Gear Manufacturer Association). The specifications below are for reference only.

JGMA 401-01 Bending Strength Formula of Spur Gears and Helical Gears
JGMA 402-01 Surface Durability Formula of Spur Gears and Helical Gears

Bending strength and durability specifications are usually used with straight and helical gears (including racks and pinions) in manufacturing industry within the ranges below:

Module: m 1.5 to 25 mm
Pitch Diameter: d 25 to 3200 mm
Tangential Speed: v \leq 5 m/sec
Rotating Speed: n \leq 3600 rpm

Conversion Formulas: Power, Torque and Force
Gear strength and durability relate to the power and forces to be transmitted. The calculation of tangential force are based on pitch circle, F_t (kgf), power, P(kw), and torque, T(kgf•m).

Formula Below:

$$F_t = \frac{102P}{V} = \frac{19.5 \times 10^6 P}{d_w n} = \frac{2000T}{d_w}$$

$$P = \frac{F_t}{102} = \frac{10^{-6}}{1.95} F_t d_w n$$

$$T = \frac{F_t d_w}{2000} = \frac{947P}{n}$$

Where v: Tangential Speed of Working Pitch Circle

$$V = \frac{d_w n}{19100} \text{ (m/sec)}$$

dw: Working Pitch Diameter (mm)
n: Rotating Speed (rpm)

Product Selection Calculation:

1. The calculation method of the above tangential force F_t can be calculated according to different input conditions;
2. Each item in the catalogue provides the maximum allowable tangential force F_{ta} for the design comparison for users;
3. When using F_{ta} , depending on the conditions of use, it is necessary to correct the load factor K_a and the life factor K_L provided in the catalog;

$$F'_{ta} = \frac{F_{ta}}{K_a \times K_L}$$

4. F_t value must be less than F'_{ta}
5. Note that the F_{ta} unit on the product catalog is kN, and the tangential force F_t is calculated in kgf, and the unit conversion is required when comparing.

Remark:

1kgf= 9.807 N= 0.0098 kN
1kN= 101.972 kgf

硬度對照表

Steel Hardness Conversion Chart

布氏 Brinell HB	洛氏 Rockwell HRC	洛氏 Rockwell HRB	維氏 Vickers HV
760	70		
752	69		
745	68		
746	67		
735	66		
711	65		
695	64		
681	63		
658	62		
642	61		
627	60		
613	59		
601	58	746	
592	57	727	
572	56	694	
552	55	649	
534	54	120	589
513	53	119	567
504	52	118	549
486	51	118	531
469	50	117	505
468	49	117	497
456	48	116	490
445	47	115	474
430	46	115	458
419	45	114	448
415	44	114	438
402	43	114	424
388	42	113	406
375	41	112	393
373	40	111	388
360	39	111	376
348	38	110	361
341	37	109	351
331	36	109	342
322	35	108	332
314	34	108	320
308	33	107	311
300	32	107	303
290	31	106	292
277	30	105	285
271	29	104	277
264	28	103	271
262	27	103	262
255	26	102	258
250	25	101	255
245	24	100	252
240	23	100	247
233	22	99	241
229	21	98	235
223	20	97	227
216	19	96	222
212	18	95	218
208	17	95	210

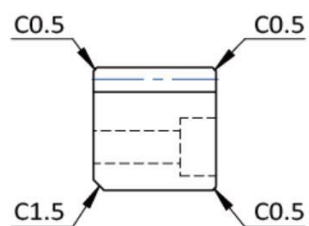
硬度對照表

Steel Hardness Conversion Chart

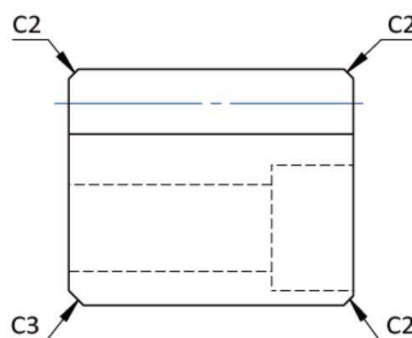
布氏 Brinell HB	洛氏 Rockwell HRC	洛氏 Rockwell HRB	維氏 Vickers HV
199	15	93	199
191	14	92	197
190	13	92	186
186	12	91	184
183	11	90	183
180	10	89	180
175	9	88	178
170	7	87	175
167	6	86	172
166	5	86	168
163	4	85	162
160	3	84	160
156	2	83	158
154	1	82	152

由於各家材料與檢測儀器不同，所有數值僅供參考。
Since all materials and testing instruments are different, all values are for reference only.

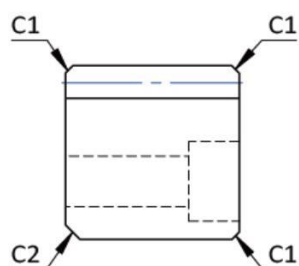
Diametral Pitch				Circular Pitch (CP)				Module			
DP	in	mm	M	DP	in	mm	M	DP	in	mm	M
1	3.1416	79.796	25.4	3	1.0472	26.599	8.4667	10.6395	0.2953	7.5	2.3873
1.0053	3.1250	79.375	25.2658	3.0691	1.0236	26	8.2761	11	0.2856	7.2540	2.3091
1.0160	3.0921	78.540	25	3.1416	1	25.4	8.0851	11.2889	0.2783	7.0690	2.2500
1.0472	3	76.200	24.2552	3.1750	0.9895	25.133	8	11.3995	0.2756	7	2.2282
1.0583	2.9684	75.398	24	3.1919	0.9843	25	7.9577	12	0.2618	6.6500	2.1167
1.0640	2.9528	75	23.8732	3.2500	0.9666	24.553	7.8154	12.2764	0.2559	6.5	2.0690
1.0927	2.8750	73.025	23.2446	3.3249	0.9449	24	7.6394	12.5664	0.2500	6.3500	2.0213
1.1399	2.7559	70	22.2817	3.3510	0.9375	23.813	7.5798	12.7	0.2474	6.2830	2
1.1424	2.7500	69.850	22.2339	3.5	0.8976	22.799	7.2571	13	0.2417	6.1380	1.9538
1.1545	2.7211	69.115	22	3.5904	0.8750	22.225	7.0744	13.2994	0.2362	6	1.9099
1.1968	2.6250	66.675	21.2233	3.6271	0.8661	22	7.0028	14	0.2244	5.7	1.8143
1.2276	2.5591	65	20.6901	3.6286	0.8658	21.991	7	14.5084	0.2165	5.5	1.7507
1.2500	2.5133	63.837	20.3200	3.7500	0.8378	21.279	6.7733	14.5143	0.2164	5.4980	1.7500
1.2566	2.5	63.5	20.2127	3.8666	0.8125	20.638	6.5691	15	0.2094	5.3200	1.6933
1.2700	2.4737	62.832	20	3.9898	0.7874	20	6.3662	15.9593	0.1969	5	1.5915
1.3228	2.3750	60.325	19.2020	4	0.7854	19.949	6.3500	16	0.1963	4.9870	1.5875
1.3299	2.3622	60	19.0986	4.1888	0.7500	19.050	6.0638	16.7552	0.1875	4.7630	1.5160
1.3963	2.2500	57.150	18.1914	4.1998	0.7480	19	6.0479	16.9333	0.1855	4.7120	1.5
1.4111	2.2263	56.549	18	4.2333	0.7421	18.850	6	17.7325	0.1772	4.5	1.4324
1.4508	2.1654	55	17.5070	4.4331	0.7087	18	5.7296	18	0.1745	4.4330	1.4111
1.4784	2.1250	53.975	17.1808	4.5	0.6981	17.733	5.6444	19.9491	0.1575	4	1.2732
1.5	2.0944	53.198	16.9333	4.5696	0.6875	17.463	5.5585	20	0.1571	3.9900	1.2700
1.5708	2	50.800	16.1701	4.6182	0.6803	17.279	5.5	20.3200	0.1546	3.9270	1.25
1.5875	1.9790	50.265	16	4.6939	0.6693	17	5.4113	22.7990	0.1378	3.5	1.1141
1.5959	1.9685	50	15.9155	4.9873	0.6299	16	5.0930	24	0.1309	3.3250	1.0583
1.6755	1.8750	47.625	15.1595	5	0.6283	15.959	5.0800	25	0.1257	3.1920	1.0160
1.6933	1.8553	47.124	15	5.0265	0.6250	15.875	5.0532	25.1327	0.1250	3.1750	1.0106
1.7500	1.7952	45.598	14.5143	5.0800	0.6184	15.708	5	25.4	0.1237	3.1420	1
1.7733	1.7717	45	14.3239	5.3198	0.5906	15	4.7746	26.5988	0.1181	3	0.9549
1.7952	1.7500	44.450	14.1489	5.5	0.5712	14.508	4.6182	28	0.1122	2.8500	0.9071
1.8143	1.7316	43.982	14	5.5851	0.5625	14.288	4.5479	30	0.1047	2.6600	0.8467
1.9333	1.6250	41.275	13.1382	5.6444	0.5566	14.137	4.5	31.4159	0.1	2.5400	0.8085
1.9538	1.6079	40.841	13	5.6997	0.5512	14	4.4563	31.7500	0.0989	2.5130	0.8
1.9949	1.5748	40	12.7324	6	0.5236	13.299	4.2333	31.9186	0.0984	2.5	0.7958
2	1.5708	39.898	12.7	6.1382	0.5118	13	4.1380	32	0.0982	2.4940	0.7938
2.0944	1.5	38.1	12.1276	6.2832	0.5	12.7	4.0425	33.8667	0.0928	2.3560	0.7500
2.0999	1.4961	38	12.0958	6.3500	0.4947	12.566	4	36	0.0873	2.2170	0.7056
2.1167	1.4842	37.699	12	6.5	0.4833	12.276	3.9077	36.2857	0.0866	2.1990	0.7
2.1855	1.4375	36.513	11.6223	6.6497	0.4724	12	3.8197	38	0.0827	2.1	0.6684
2.2166	1.4173	36	11.4592	7	0.4488	11.399	3.6286	39.8982	0.0787	2	0.6366
2.2500	1.3963	35.465	11.2889	7.1808	0.4375	11.113	3.5372	40	0.0785	1.9950	0.6350
2.2848	1.3750	34.925	11.1170	7.2542	0.4331	11	3.5014	42.3333	0.0742	1.8850	0.6
2.3091	1.3605	34.558	11	7.2571	0.4329	10.996	3.5	48	0.0654	1.6620	0.5292
2.3470	1.3386	34	10.8225	7.9796	0.3937	10	3.1831	50	0.0628	1.5960	0.5080
2.3936	1.3125	33.338	10.6117	8	0.3927	9.975	3.1750	50.2655	0.0625	1.5880	0.5053
2.4936	1.2598	32	10.1859	8.3776	0.3750	9.525	3.0319	50.8	0.0618	1.5710	0.5
2.5	1.2566	31.919	10.1600	8.3996	0.3740	9.5	3.0239	53.1976	0.0591	1.5	0.4775
2.5133	1.2500	31.750	10.1063	8.4667	0.3711	9.425	3	63.5	0.0495	1.2570	0.4
2.5400	1.2368	31.416	10	8.8663	0.3543	9	2.8648	64	0.0491	1.2470	0.3969
2.6456	1.1875	30.163	9.6010	9	0.3491	8.866	2.8222	72	0.0436	1.1080	0.3528
2.6599	1.1811	30	9.5493	9.2364	0.3401	8.639	2.7500	79.7965	0.0394	1	0.3183
2.7500	1.1424	29.017	9.2364	9.3878	0.3346	8.5	2.7056	80	0.0393	0.9970	0.3175
2.7925	1.1250	28.575	9.0957	9.9746	0.3150	8	2.5465	84.6667	0.0371	0.9420	0.3
2.8222	1.1132	28.274	9	10	0.3142	7.980	2.5400	96	0.0327	0.8310	0.2646
2.8499	1.1024	28	8.9127	10.0531	0.3125	7.938	2.5266	120	0.0262	0.6650	0.2117
2.9568	1.0625	26.988	8.5904	10.1600	0.3092	7.854	2.5	127	0.0247	0.6280	0.2



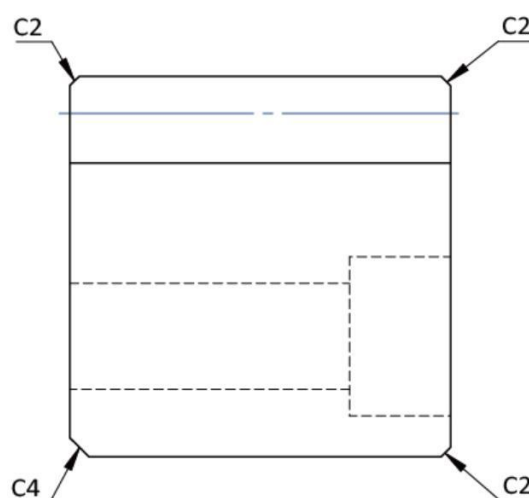
M1 & M1.5



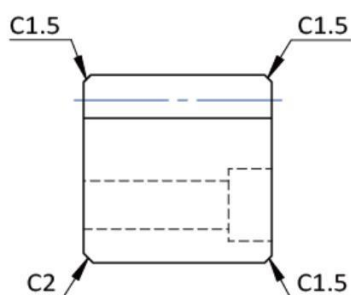
M6



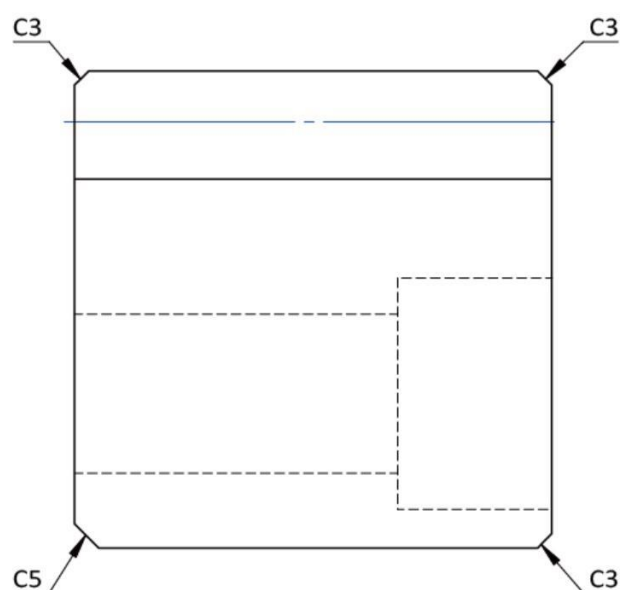
M2 & M3



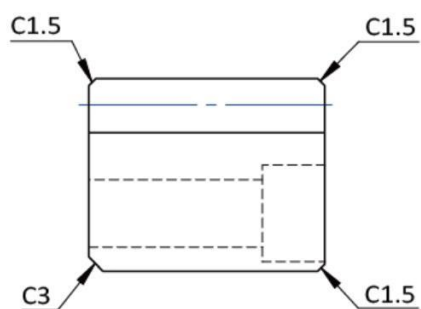
M8



M4



M10 & M12



M5

單位 / Unit: mm

齒隨心動

YYY使傳動更精準



精傑機械股份有限公司
精傑機電有限公司

地址：廣東省東莞市樟木頭鎮石新東城四街23號

電話：135 4921 7001 / 400-028-8380

郵件：jingjietw@126.com

網站：www.jingjietw.com

Jingjie Machinery Co., Ltd.
Jingjie Electrical Co., Ltd.

Address: No. 23, Fourth Street, Shixin
Dongcheng, Zhangmutou Town, Dong-
guan City, Guangdong Province

Phone: 13549217001 / 400-028-8380

E-mail: jingjietw@126.com

Website: www.jingjietw.com